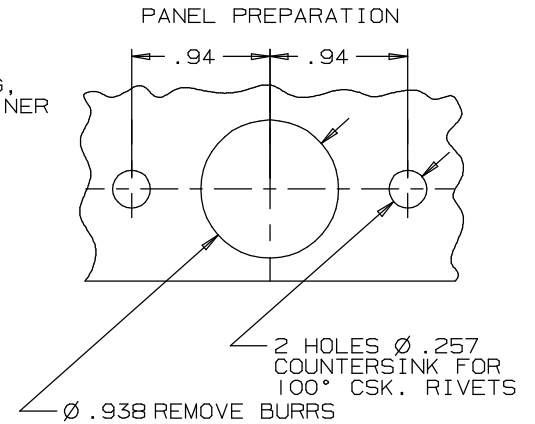
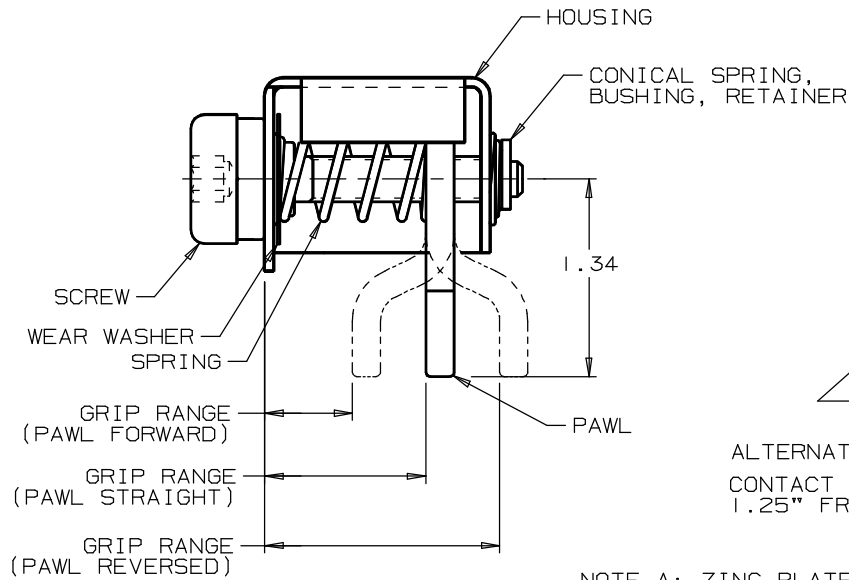
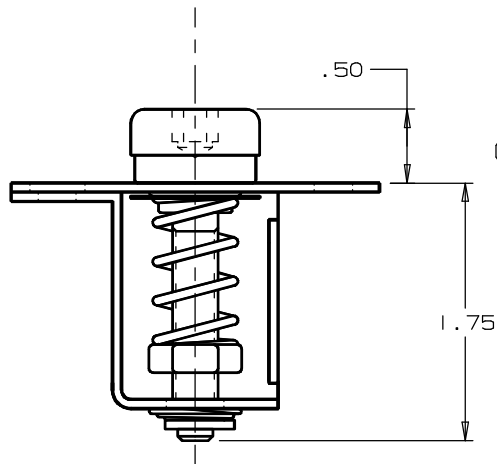
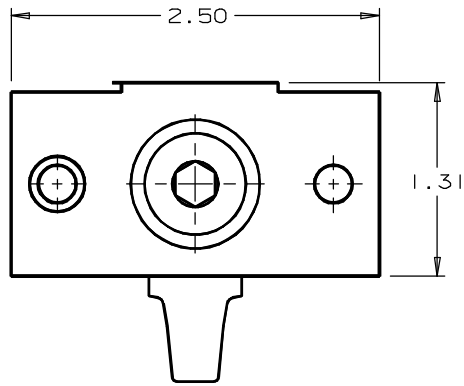




ADJUSTABLE PAWL FASTENER - FLUSH HEAD, HEX SOCKET (TYPE A)

DATE	DRAWN	CHKD	SCALE	DRAWING NUMBER
11-20-81	HAR		.8:1	J-14-10-9-1



ALTERNATIVE MOUNTING METHOD - SPOT WELD
CONTACT POINT OF PAWL NOT TO EXCEED 1.25" FROM CENTERLINE OF SCREW

NOTE A: ZINC PLATE, CHROMATE PLUS SEALER.

ITEM	MATERIAL	FINISH		
SCREW	STEEL	SEE CHART		
PAWL	STEEL	SEE NOTE A		
HOUSING	STEEL	SEE NOTE A		
SPRING	STAINLESS STEEL	PASSIVATE		
BUSHING	STEEL	SEE NOTE A		
CONICAL SPRING	STAINLESS STEEL	PASSIVATE		
RETAINER	STEEL	SEE NOTE A		
WEAR WASHER	STEEL	SEE NOTE A		
ASSEMBLY	SCREW FINISH	PAWL POSITION	GRIP RANGE	
14-10-91-11	SEE NOTE A	FORWARD	.125 .750	
14-10-91-12	CHROME PLATE	FORWARD	.125 .750	
14-10-92-11	SEE NOTE A	-----	.375 1.250	
14-10-92-12	CHROME PLATE	-----	.375 1.250	
14-10-93-11	SEE NOTE A	-----	.375 1.250	
14-10-93-12	CHROME PLATE	-----	.375 1.250	
14-10-94-11	SEE NOTE A	REVERSED	.875 1.688	
14-10-94-12	CHROME PLATE	REVERSED	.875 1.688	

THESE ASSEMBLIES ARE NON-REPAIRABLE ITEMS AND COMPONENTS ARE NOT AVAILABLE AS REPLACEMENT OR REPAIR PARTS.

REV.	DATE	BY-CHKD	REVISIONS
I	20MAR96	PCB	PRN: 14-88
J	24JUN96	RJB	PRN: 14-88B
K	08NOV96	JGK	PRN: S-1-06A

PROPRIETARY ITEM - EXCEPT FOR USES EXPRESSLY GRANTED IN WRITING INFORMATION DISCLOSED HEREON IS CONFIDENTIAL AND ALL RIGHTS PATENT AND OTHERWISE ARE RESERVED BY SOUTHCO, INC.

DIMENSIONS IN INCHES
THIRD ANGLE PROJECTION

DRAWING NUMBER
J-14-10-9-1