

NOTES:

- A. $\frac{1}{4}$ DIAMOND SHAMROCK CORP.
- B. TIGHTENING TORQUE OF MOUNTING NUTS NOT TO EXCEED 75 in - lbs
- C. MOUNTING LOCKWASHER NUT (4) INCLUDED UNASSEMBLED

southco

PROPRIETARY ITEM - EXCEPT FOR USES EXPRESSLY GRANTED IN WRITING INFORMATION DISCLOSED HEREON IS CONFIDENTIAL AND ALL RIGHTS PATENT AND OTHERWISE ARE RESERVED BY SOUTHCO, INC.

**No.24 HEAVY DUTY FASTENER ASSEMBLY
FIXED PAWL TYPE A (STUD MOUNT)**

DATE	DRAWN	CHKD	SCALE	DRAWING NUMBER
3-8-82	JHV		.75:1	J-24-20-622-10

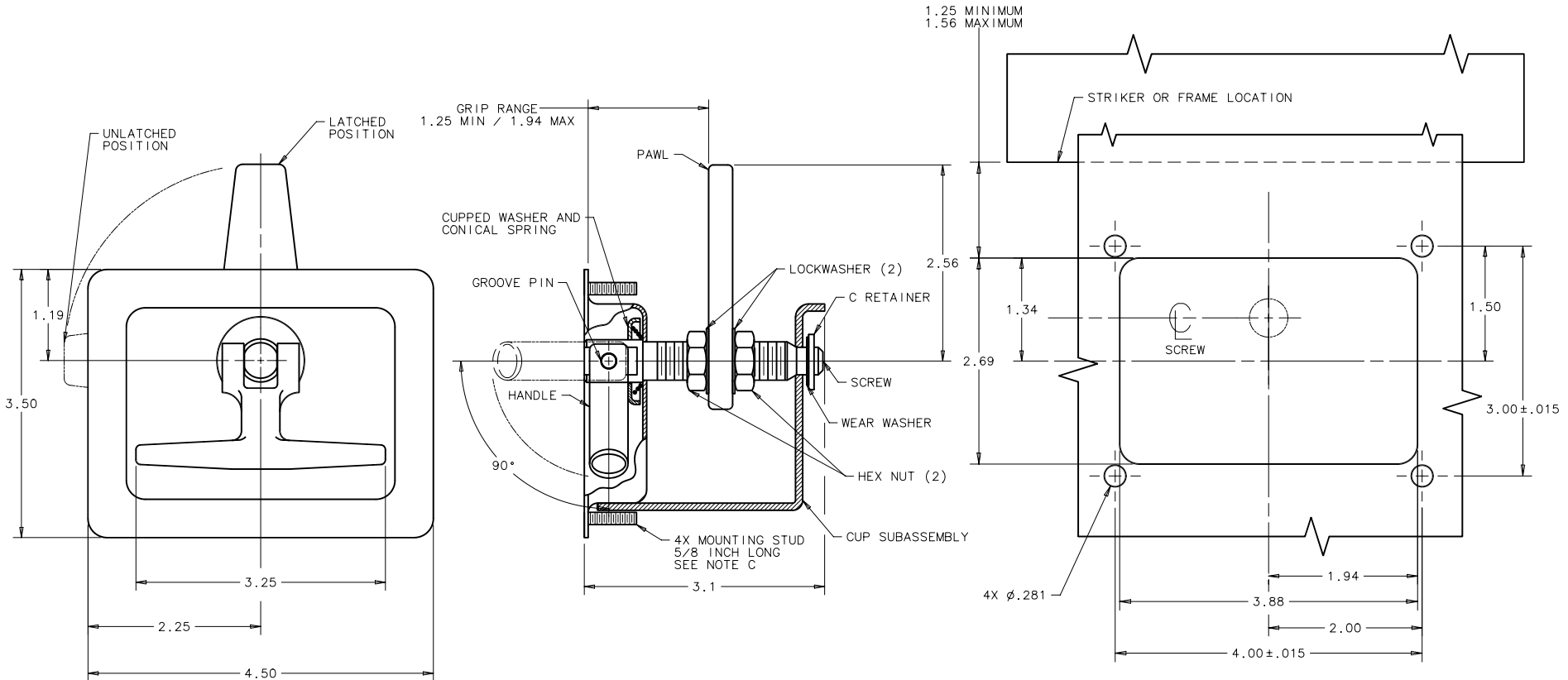
REV	DATE	DRAWN/CHKD	DESCRIPTION	ITEM	PART NUMBER	MATERIAL	FINISH
E	6-8-93	JGK	PRN:24-136	ASSEMBLY	24-20-622-10	-	-
F	18MAY2004	RLR/AJH	PRN:P2004-0492	HANDLE	-	DIE CAST ZINC	DACROTIZED $\frac{1}{4}$ PLUS SEALER
				GROOVE PIN	-	STEEL	ZINC PLATE PLUS BRIGHT CHROMATE
				CONICAL SPRING	-	STAINLESS STEEL	PASSIVATE $\frac{1}{4}$
				PAWL	-	STEEL	DACROSEALED $\frac{1}{4}$
				WEAR WASHER	-	NYLON	NATURAL
				C RETAINER	-	STEEL	ZINC PLATE PLUS CHROMATE YELLOW DIP
				SCREW	-	STEEL	DACROSEALED $\frac{1}{4}$
				CUP SUBASSEMBLY	-	STEEL	DACROTIZED $\frac{1}{4}$ PLUS SEALER
				CUPWASHER	-	STEEL	DACROSEALED $\frac{1}{4}$
				LOCKWASHER(2)	-	STEEL	ZINC PLATE PLUS CHROMATE YELLOW DIP
				HEX NUT(2)	-	STEEL	ZINC PLATE PLUS CHROMATE YELLOW DIP
				LOCKWASHER NUT(4)	-	STEEL	ZINC PLATE BRIGHT CHROMATE

INCHES

ALL DIMENSIONS WITHOUT TOLERANCES ARE FOR REFERENCE ONLY.

THIRD ANGLE PROJECTION

B PAPER SIZE



PANEL PREPARATION