

SOUTHC O, INC.

SOUTHC O No 27 ADJUSTABLE PANEL FASTENER - Assembly
SOUTHC O KNOB TYPE - TYPE A

DATE	DRAWN	CHKD	SCALE	DRAWING NUMBER
7-11-75	JHV		2X	J-27-10-311-10

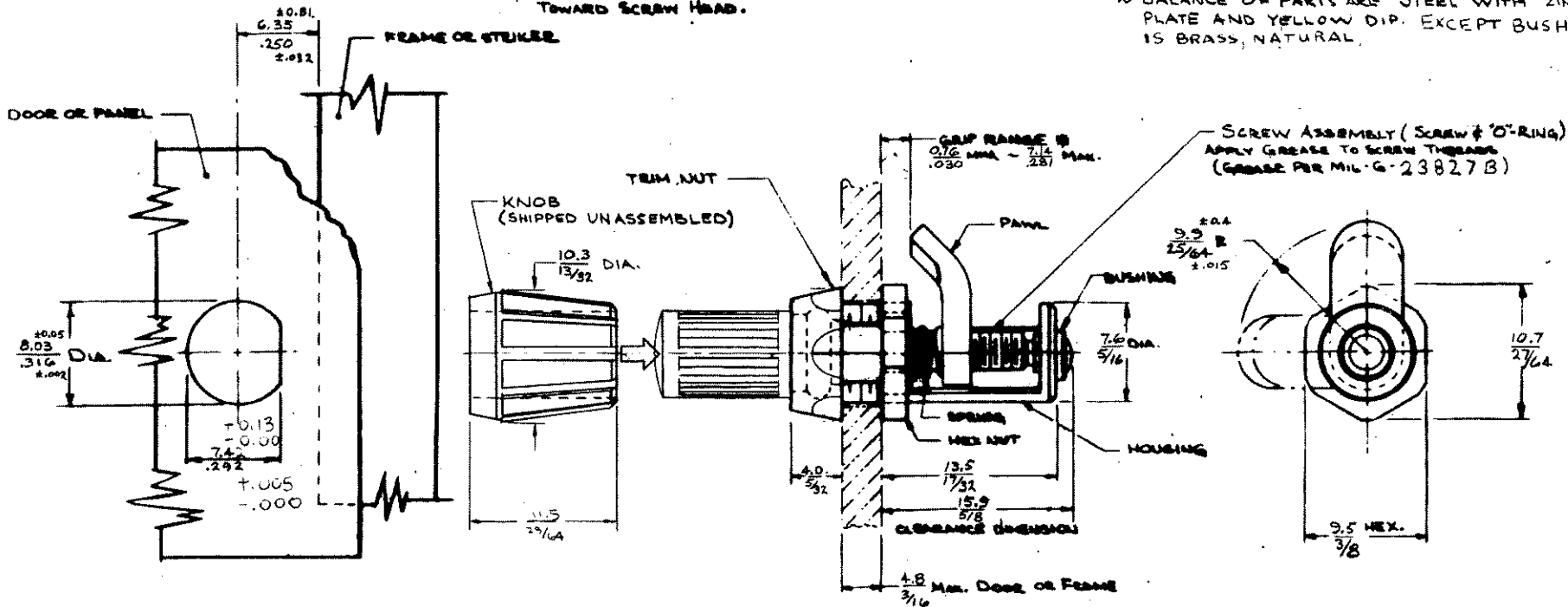
REV. LET.	DATE	BY-CHKD	REVISIONS	ITEM	PART No.	MATERIAL	FINISH	U.S.	DATE	BY
A	11-5-80	RJB	PRN 27-24	Assembly	27-10-311-10			A		
B	3-22-82	JGK	PRN 5-1-01	FASTENER ASSY	27-99-123-10	SEE NOTE "A"	SEE NOTE "A"	B		
C	2-3-88	JGK	PRN 27-37	KNOB	27-71-101-41	THERMOPLASTIC	BLACK	C		
D	3-1-84	VRL	PRN: 27-43					D	8-8-75	
E	4-11-84	DWF	PRN: 27-46							
F	19 JAN 93	JGK	PRN: 14-75							
G	5 MAR 93	JRB	PRN: 5-1-03							

THESE ASSEMBLIES ARE NON-REPAIRABLE ITEMS AND COMPONENTS ARE NOT AVAILABLE AS REPLACEMENT OR REPAIR PARTS.

IF OUTER PANEL THICKNESS PERMITTING, MAX. GRIP MAY BE EXTENDED WHERE NECESSARY BY ADJUSTING HEX NUT TOWARD SCREW HEAD.

NOTE "A" - MATERIAL & FINISH -

- ~ O-RING IS SYNTHETIC RUBBER, NATURAL
- ~ SCREW AND TRIM NUT ARE STEEL WITH ZINC PLATE AND BRIGHT DIP.
- ~ SPRING AND HEX NUT ARE STAINLESS STEEL, PASSIVATED.
- ~ BALANCE OF PARTS ARE STEEL WITH ZINC PLATE AND YELLOW DIP. EXCEPT BUSHING IS BRASS, NATURAL.



MOUNTING INSTRUCTIONS

PUNCH SHAPED HOLE IN PANEL, LOCATED AS SHOWN. INSERT FASTENER FROM BACK SIDE OF PANEL, MAKING SURE HEX NUT IS AT BACK EDGE OF HOUSING. CUT-OUT. SLIP TRIM NUT OVER SCREW AND RUN DOWN FINGER TIGHT AGAINST PANEL. WITH PANEL IN LOCKED POSITION AND HOUSING PROPERLY ORIENTED, HOLD HOUSING IN POSITION AND TIGHTEN HEX NUT HARD AGAINST PANEL WITH $\frac{1}{2}$ OPEN-END WRENCH. THEN PUSH KNOB ONTO KNURLED HEAD OF SCREW.

TOLEANCES UNLESS OTHERWISE NOTED
 DECIMALS $\pm .000$ FRACTIONS $\pm \frac{1}{32}$ ANGLES $\pm 2^\circ$

DRAWING NUMBER

J-27-10-311-10