



SOUTHCO No.27 ADJUSTABLE PAWL FASTENER - ASSEMBLY
SOUTHCO KNOB TYPE - TYPE A

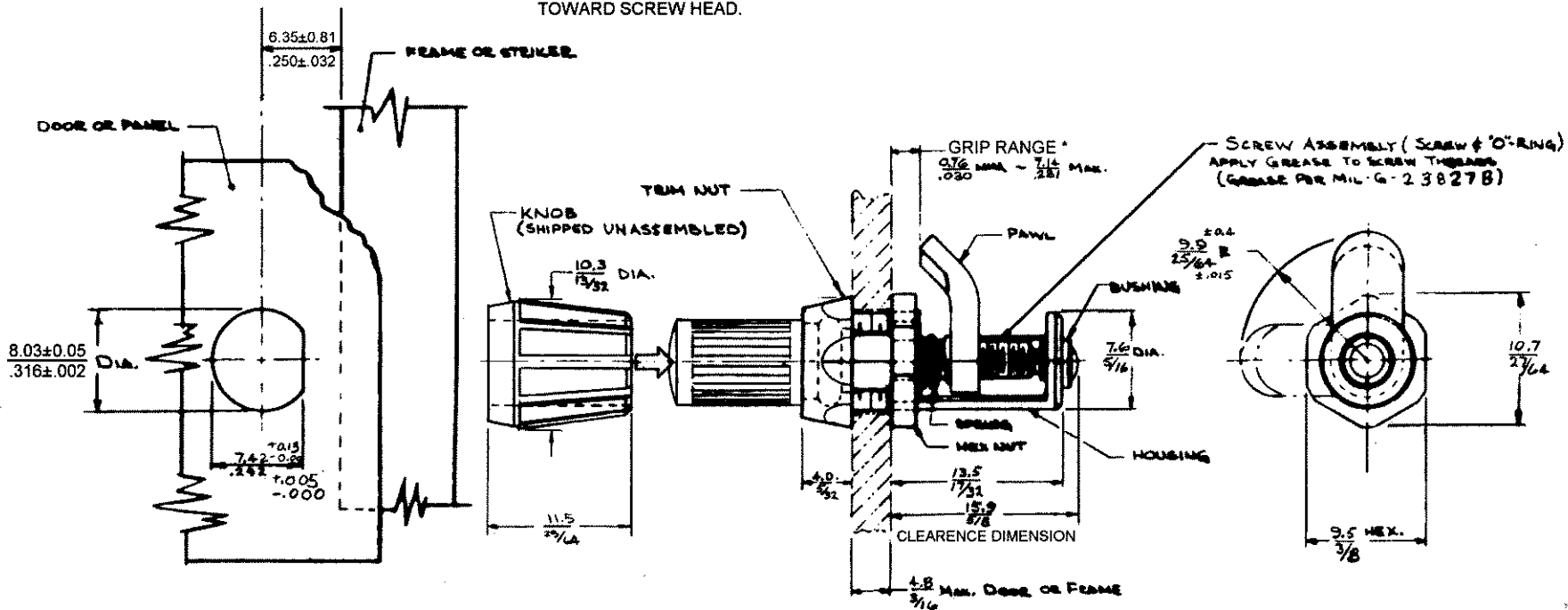
DATE	DESIGN	ENG	SCALE	DRAWING NUMBER
7-11-75	JHV		N.T.S.	J-27-10-311-20

REV. LET.	DATE	BY-CHKD	REVISIONS	ITEM	PART No.	MATERIAL	FINISH	U.S.	DATE	APP.
A	11-5-80	RTB	PRN 27-24	ASSEMBLY	27-10-311-20			A		
B	3-21-82	JGK	PRN 5-1-01	FASTENER ASSY	27-99-123-20	SEE NOTE "A"	SEE NOTE "A"	B		
C	2-3-88	JSS	PRN: 27-37 (TRM. NUTS)	KNOB	27-71-101-41	THERMO PLASTIC	BLACK	C		
D	3-1-89	NAL	PRN: 27-43					D	6-8-75	
E	4-11-89	DWF	PRN: 27-46							
F	18 Jan 93	JGK	PRN: 14-75							
G	5 MAR 93	JBR	PRN: 5-1-03							

THESE ASSEMBLIES ARE NON-REPAIRABLE ITEMS AND COMPONENTS ARE NOT AVAILABLE AS REPLACEMENT OR REPAIR PARTS.

* OUTER PANEL THICKNESS PERMITTING, MAX. GRIP MAY BE EXTENDED WHERE NECESSARY BY ADJUSTING HEX NUT TOWARD SCREW HEAD.

NOTE "A" - MATERIAL AND FINISH - COMPONENTS ARE STAINLESS STEEL, PASSIVATED EXCEPT FOR "O" RING WHICH IS SYNTHETIC RUBBER, NATURAL AND BUSHING WHICH IS BRASS, NATURAL.



Mounting Instructions

PUNCH SHAPED HOLE IN PANEL, LOCATED AS SHOWN. INSERT FASTENER FROM BACK SIDE OF PANEL, MAKING SURE HEX NUT IS AT BACK EDGE OF HOUSING CUTOUT. SLIP TRIM NUT OVER SCREW AND RUN DOWN FINGER TIGHT AGAINST PANEL. WITH PAWL IN LOCKED POSITION AND HOUSING PROPERLY ORIENTED, HOLD HOUSING IN POSITION AND TIGHTEN HEX NUT HARD AGAINST PANEL WITH 3/8 OPEN-END WRENCH THEN PUSH KNOB ONTO KNURLED HEAD OF SCREW.