

REV	DATE	DRAWN/CHKD	DESCRIPTION	PART NUMBER	SCREW PROJECTION		PANEL THICKNESS	
					P-1	P-2	A, MIN	A, MAX
A	15FEB2003	DLH/AJH	PRN: P2002-0887	47-60-6X1-YZ	.02	.28	.035	-
B	13NOV2015	CMS/JCG	PRN: P2015-2293	47-61-6X1-YZ	.08	.34		
				47-62-6X1-YZ	.15	.41		
				47-63-6X1-YZ	.21	.47		

**INCHES**

ALL DIMENSIONS WITHOUT TOLERANCES ARE FOR REFERENCE ONLY.

THIRD ANGLE PROJECTION

B PAPER SIZE

**MATERIAL AND FINISH:**

KNOB: 6000 SERIES ALUMINUM

SCREW: 400 SERIES STAINLESS STEEL, PASSIVATED; OR HARDENED CARBON STEEL, ZINC PLATE, CHROMATE PLUS SEALER (SEE "Z" TABLE) (NOTE: KNOB AND TOP OF SCREW AVAILABLE WITH POWDER COATING; SEE "Y" TABLE)

FERRULE: HARDENED CARBON STEEL; ZINC PLATE, CHROMATE PLUS SEALER

SPRING: 300 SERIES STAINLESS STEEL, PASSIVATED

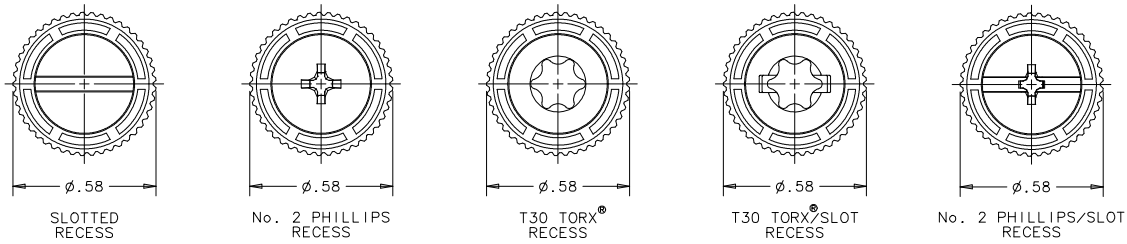
- "X" SCREW RECESS**
- 0 - SLOTTED
  - 2 - No.2 PHILLIPS
  - 4 - T30 TORX®
  - 6 - T30 TORX®/SLOT COMBINATION
  - 8 - No.2 PHILLIPS/SLOT COMBINATION

- "Y" FINISH ON KNOB & SCREW HEAD**
- 2 - BRIGHT
  - 4 - CUSTOM COLOR. SEE J-47-0-3 FOR ADDITIONAL SUFFIX
  - 6 - BLACK POWDER COATED

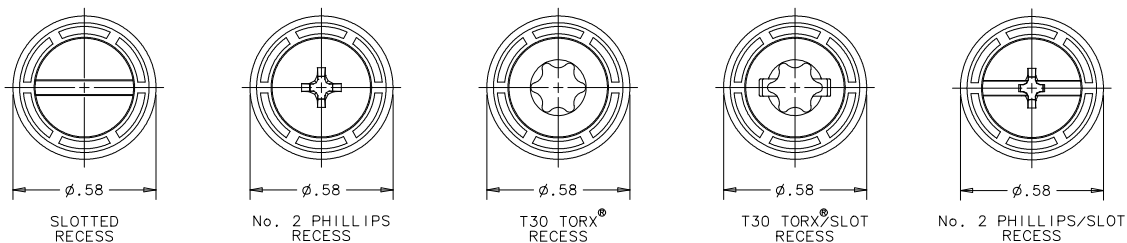
**"Z" KNOB TYPE AND SCREW MATERIAL**

KNOB	SCREW MATERIAL	RECESS	
		SLOTTED PHILLIPS	TORX®/SLOT PHILLIPS/SLOT
KNURLED	STAINLESS STEEL	0	N/A
SMOOTH	STAINLESS STEEL	1	N/A
KNURLED	STEEL	4	0
SMOOTH	STEEL	5	1

**KNURLED KNOBS**



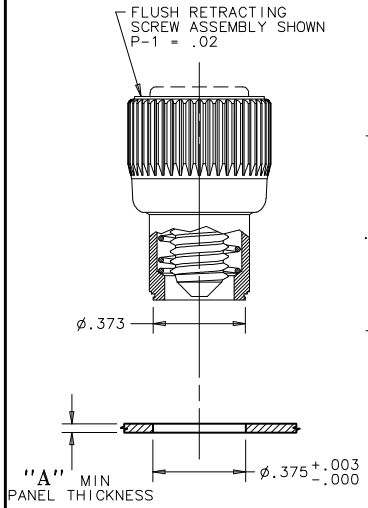
**SMOOTH KNOBS**



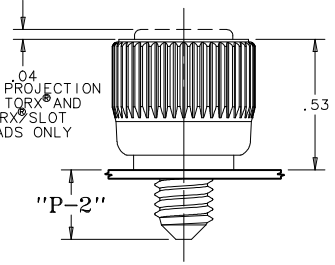
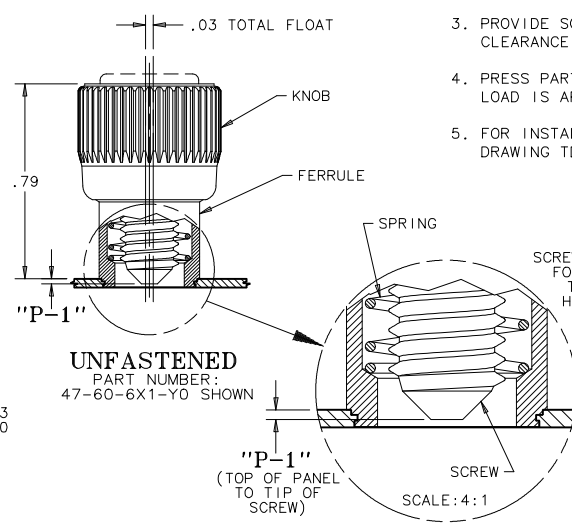
NOTE: KNOB AND SCREW ARE SPRING LOADED OUTWARD, AS SHOWN BELOW

**TO INSTALL FASTENER:**

1. DRILL OR PUNCH HOLE AS SHOWN BELOW.
2. PLACE FERRULE INTO INSTALLATION HOLE.
3. PROVIDE SOLID BACK-UP BEHIND HOLE WITH CLEARANCE HOLE  $\phi .260^{+0.008}_{-0.004}$  FOR SCREW.
4. PRESS PART INTO PANEL UNTIL RECOMMENDED LOAD IS APPLIED.
5. FOR INSTALLATION FORCE GUIDELINES SEE DRAWING TD-47-8-J.



**PANEL PREPARATION**  
PART NUMBER: 47-60-6X1-Y0 SHOWN



TORX® IS A REGISTERED TRADEMARK OF THE CAMCAR DIVISION OF TEXTRON, INC.

DRAWING NUMBER  
J-47-3-2520