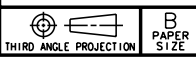


REV	DATE	DRAWN/CHKD	DESCRIPTION

PART NUMBER	SCREW PROJECTION		PANEL THICKNESS	
	P-1	P-2	A, MIN	A, MAX
47-65-2X1-YZ	.06	.24	.063	-
47-66-2X1-YZ	.12	.3		
47-67-2X1-YZ	.18	.36		
47-68-2X1-YZ	.24	.42		

INCHES			

ALL DIMENSIONS WITHOUT TOLERANCES ARE FOR REFERENCE ONLY.



MATERIAL AND FINISH:

KNOB: 6000 SERIES ALUMINUM
 SCREW: 400 SERIES STAINLESS STEEL, PASSIVATED; OR HARDENED CARBON STEEL, ZINC PLATE, CHROMATE PLUS SEALER (SEE "Z" TABLE). (NOTE: KNOB AND TOP OF SCREW AVAILABLE WITH POWDER COATING; SEE "Y" TABLE)
 FERRULE: 300 SERIES STAINLESS STEEL, PASSIVATED
 SPRING: 300 SERIES STAINLESS STEEL, PASSIVATED

"Z" KNOB TYPE AND SCREW MATERIAL

"X" SCREW RECESS

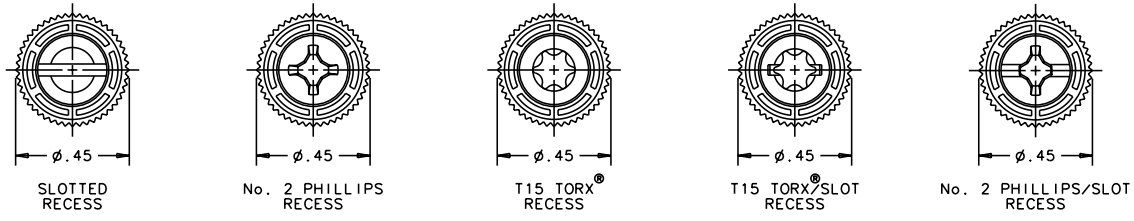
- 0 - SLOTTED
- 2 - No. 2 PHILLIPS
- 4 - T15 TORX
- 6 - T15 TORX/SLOT COMBINATION
- 8 - No. 2 PHILLIPS/SLOT COMBINATION

"Y" FINISH ON KNOB & SCREW HEAD

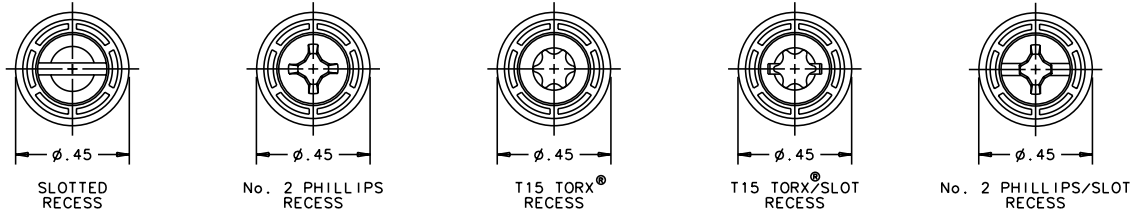
- 3 - BRIGHT
- 4 - CUSTOM COLOR. SEE J-47-0-3 FOR ADDITIONAL SUFFIX
- 7 - BLACK POWDER COATED

KNOB	SCREW MATERIAL	RECESS	
		SLOTTED TORX [®] PHILLIPS/SLOT	TORX [®] /SLOT
KNURLED	STAINLESS STEEL	0	N/A
SMOOTH	STAINLESS STEEL	1	N/A
KNURLED	STEEL	4	0
SMOOTH	STEEL	5	1

KNURLED KNOBS

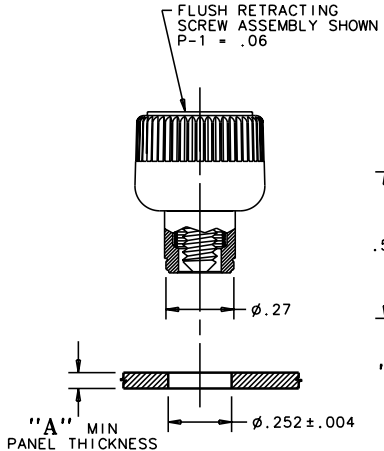


SMOOTH KNOBS

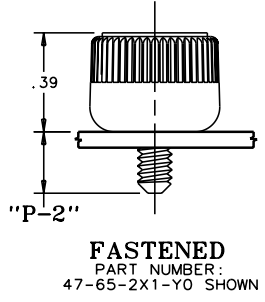
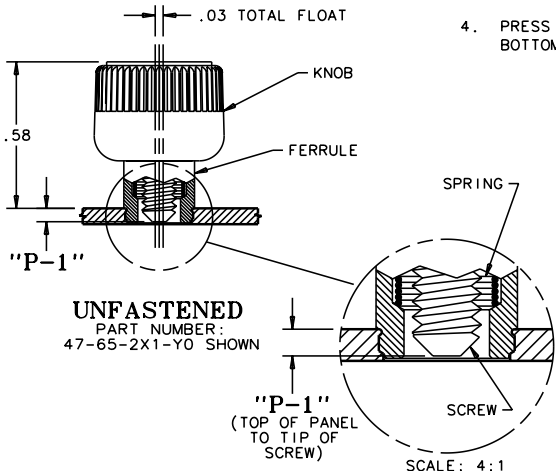


TO INSTALL FASTENER:

1. DRILL OR PUNCH HOLE AS SHOWN BELOW.
2. PLACE FERRULE INTO INSTALLATION HOLE.
3. PROVIDE SOLID BACK-UP BEHIND HOLE WITH CLEARANCE HOLE $\phi .146^{+0.008}_{-.004}$ FOR SCREW.
4. PRESS KNURL INTO PANEL UNTIL SHOULDER BOTTOMS OUT.



NOTE: KNOB AND SCREW ARE SPRING LOADED OUTWARD, AS SHOWN BELOW



PANEL PREPARATION
PART NUMBER: 47-65-2X1-Y0 SHOWN

SCALE: 4:1

TORX[®] IS A REGISTERED TRADEMARK OF THE CAMCAR DIVISION OF TETRON, INC.

DRAWING NUMBER
J-47-4-632