

REV	DATE	DRAWN/CHKD	DESCRIPTION
A	13FEB2003	DLH/AJH	PRN: P2002-0874

PART NUMBER	SCREW PROJECTION		PANEL THICKNESS		B	L
	P-1	P-2	A. MIN	A. MAX		
47-60-5X0-YZ	.04	.22				
47-61-5X0-YZ	.11	.28				
47-62-5X0-YZ	.17	.35	.02	.04	.08	.04
47-63-5X0-YZ	.23	.41				
47-60-5X2-YZ	.11	.28				
47-61-5X2-YZ	.17	.35	.04	.06	.10	.07
47-62-5X2-YZ	.23	.41				
47-60-5X4-YZ	.11	.28				
47-61-5X4-YZ	.17	.35	.06	.10	.14	.10
47-62-5X4-YZ	.23	.41				
47-60-5X6-YZ	.17	.35	.10	.13	.17	.13
47-61-5X6-YZ	.23	.41				
47-60-5X8-YZ	.23	.41	.13	.20	.24	.20

INCHES

ALL DIMENSIONS WITHOUT TOLERANCES ARE FOR REFERENCE ONLY.

THIRD ANGLE PROJECTION

B PAPER SIZE

**MATERIAL AND FINISH:**

**KNOB:** 6000 SERIES ALUMINUM, NATURAL OR BLACK POWDER COATED

**SCREW:** 400 SERIES STAINLESS STEEL, PASSIVATED; OR HARDENED CARBON STEEL, ZINC PLATE, CHROMATE PLUS SEALER (SEE "Z" TABLE) (NOTE: KNOB AND TOP OF SCREW AVAILABLE WITH POWDER COATING; SEE "Y" TABLE)

**FERRULE:** 6000 SERIES ALUMINUM, NATURAL

**SPRING:** 300 SERIES STAINLESS STEEL, PASSIVATED

"Z" KNOB TYPE AND SCREW MATERIAL

**"X" SCREW RECESS**

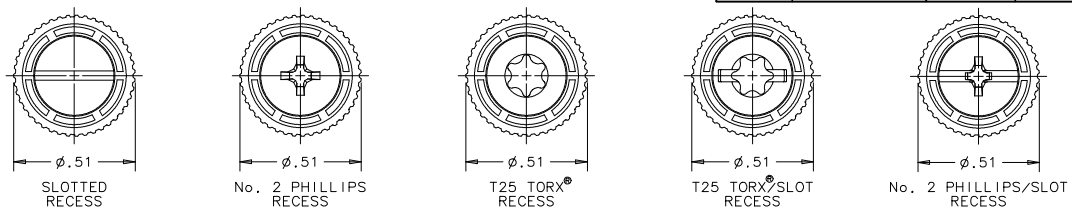
- 1 - SLOTTED
- 3 - No. 2 PHILLIPS
- 5 - T25 TORX
- 7 - T25 TORX/SLOT COMBINATION
- 9 - No. 2 PHILLIPS/SLOT COMBINATION

**"Y" FINISH ON KNOB & SCREW HEAD**

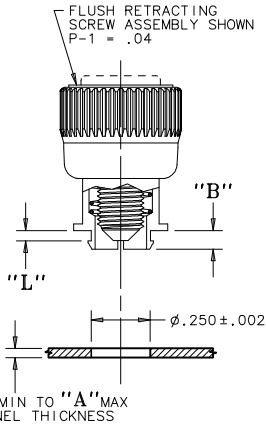
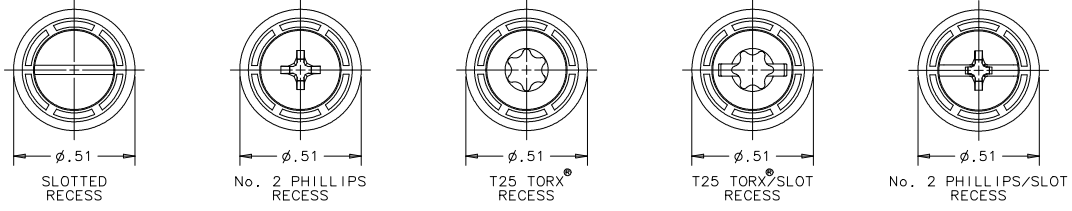
- 1 - BRIGHT
- 4 - CUSTOM COLOR, SEE J-47-0-3 FOR ADDITIONAL SUFFIX
- 5 - BLACK POWDER COATED

KNOB	SCREW MATERIAL	RECESS	
		SLOTTED PHILLIPS	TORX®/SLOT PHILLIPS/SLOT
KNURLED	STAINLESS STEEL	0	N/A
SMOOTH	STAINLESS STEEL	1	N/A
KNURLED	STEEL	4	0
SMOOTH	STEEL	5	1

**KNURLED KNOBS**



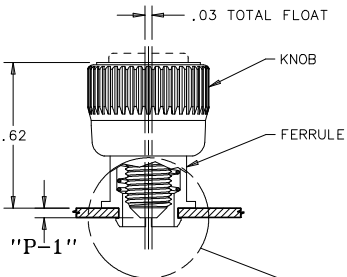
**SMOOTH KNOBS**



NOTE: KNOB AND SCREW ARE SPRING LOADED OUTWARD, AS SHOWN BELOW

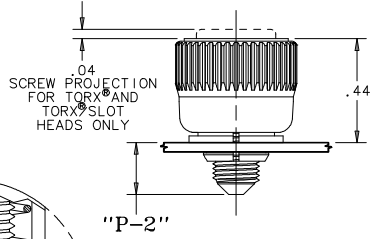
**TO INSTALL FASTENER:**

1. PREPARE PANEL AS SHOWN. NOTE: IF HOLES ARE DRILLED, TOP EDGE OF HOLE SHOULD BE CHAMFERED.
2. SCREW ASSEMBLY CAN BE INSTALLED WITH FINGER PRESSURE FROM PUNCH SIDE OF PANEL. NOTE: ASSEMBLY MUST BE KEPT PERPENDICULAR TO PANEL WHILE SNAPPING INTO HOLE.
3. FOR INSTALLATION FORCE GUIDELINES SEE DRAWING TD-47-10-J.

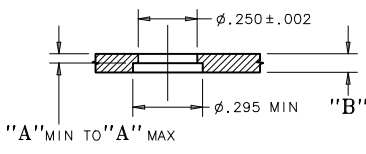


**PANEL PREPARATION I**  
REQUIRES SPACE BETWEEN INNER AND OUTER PANELS  
PART NUMBER:  
47-60-5X0-Y0 SHOWN

**UNFASTENED**  
PART NUMBER:  
47-60-5X0-Y0 SHOWN



**FASTENED**  
PART NUMBER:  
47-60-5X0-Y0 SHOWN



**PANEL PREPARATION II**  
PROVIDES A FLUSH PANEL-TO-PANEL CONDITION WHEN FASTENED  
PART NUMBER:  
47-60-5X0-Y0 SHOWN

"P-1"  
(TOP OF PANEL TO TIP OF SCREW)