

REV	DATE	DRAWN/CHKD	DESCRIPTION

PART NUMBER	SCREW PROJECTION		PANEL THICKNESS		B	L
	P-1	P-2	A, MIN	A, MAX		
47-60-2X0-YZ	.03	.22				
47-61-2X0-YZ	.09	.28	.02	.04	.08	.04
47-62-2X0-YZ	.16	.35				
47-63-2X0-YZ	.22	.41				
47-60-2X2-YZ	.09	.28				
47-61-2X2-YZ	.16	.35	.04	.06	.10	.07
47-62-2X2-YZ	.22	.41				
47-60-2X4-YZ	.09	.28				
47-61-2X4-YZ	.16	.35	.06	.10	.14	.10
47-62-2X4-YZ	.22	.41				
47-60-2X6-YZ	.16	.35				
47-61-2X6-YZ	.22	.41	.10	.13	.17	.13
47-60-2X8-YZ	.22	.41	.13	.20	.24	.20

INCHES

ALL DIMENSIONS WITHOUT TOLERANCES ARE FOR REFERENCE ONLY.



MATERIAL AND FINISH:

KNOB: 6000 SERIES ALUMINUM

SCREW: 400 SERIES STAINLESS STEEL, PASSIVATED; OR HARDENED CARBON STEEL, ZINC PLATE, CHROMATE PLUS SEALER (SEE "Z" TABLE) (NOTE: KNOB AND TOP OF SCREW AVAILABLE WITH POWDER COATING; SEE "Y" TABLE)

FERRULE: 2000 SERIES ALUMINUM, NATURAL

SPRING: 300 SERIES STAINLESS STEEL, PASSIVATED

"Z" KNOB TYPE AND SCREW MATERIAL

"X" SCREW RECESS

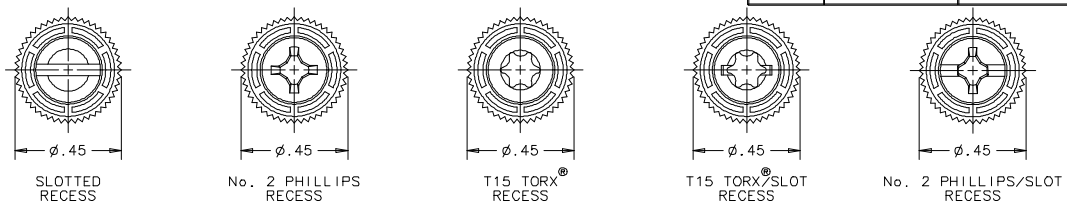
- 1 - SLOTTED
- 3 - No. 2 PHILLIPS
- 5 - T15 TORX
- 7 - T15 TORX/SLOT COMBINATION
- 9 - No. 2 PHILLIPS/SLOT COMBINATION

"Y" FINISH ON KNOB & SCREW HEAD

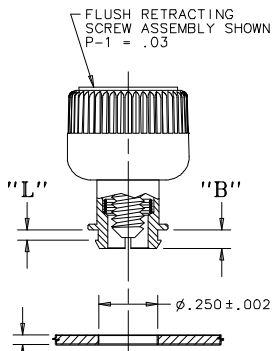
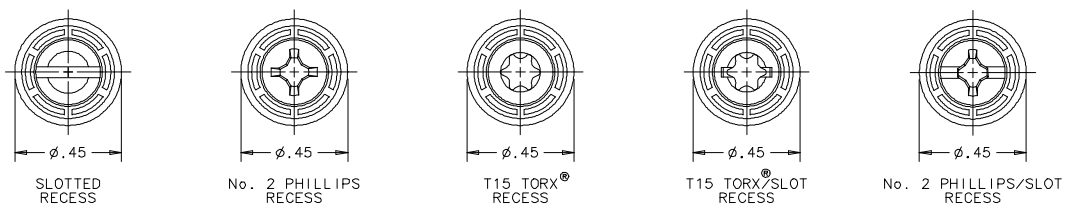
- 1 - BRIGHT
- 4 - CUSTOM COLOR. SEE J-47-0-3 FOR ADDITIONAL SUFFIX
- 5 - BLACK POWDER COATED

KNOB	SCREW MATERIAL	RECESS	
		SLOTTED TORX PHILLIPS/SLOT	TORX/SLOT
KNURLED	STAINLESS STEEL	0	N/A
SMOOTH	STAINLESS STEEL	1	N/A
KNURLED	STEEL	4	0
SMOOTH	STEEL	5	1

KNURLED KNOBS



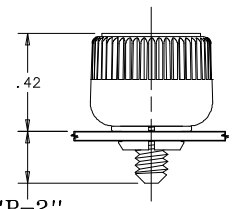
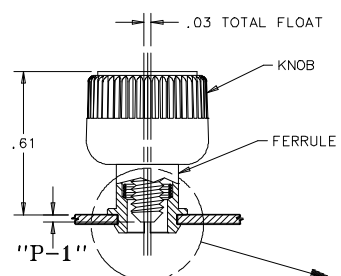
SMOOTH KNOBS



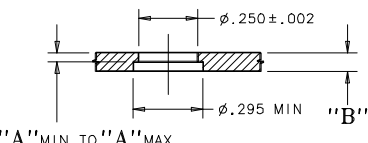
NOTE: KNOB AND SCREW ARE SPRING LOADED OUTWARD, AS SHOWN BELOW

TO INSTALL FASTENER:

- PREPARE PANEL AS SHOWN. NOTE: IF HOLES ARE DRILLED, TOP EDGE OF HOLE SHOULD BE CHAMFERED.
- SCREW ASSEMBLY CAN BE INSTALLED WITH FINGER PRESSURE FROM PUNCH SIDE OF PANEL. NOTE: ASSEMBLY MUST BE KEPT PERPENDICULAR TO PANEL WHILE SNAPPING INTO HOLE.

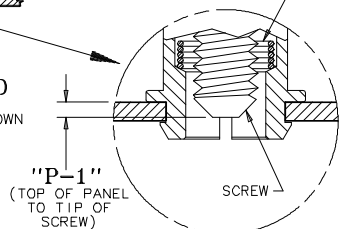


PANEL PREPARATION I
REQUIRES SPACE BETWEEN INNER AND OUTER PANELS
PART NUMBER:
47-60-2X0-Y0 SHOWN



PANEL PREPARATION II
PROVIDES A FLUSH PANEL-TO-PANEL CONDITION WHEN FASTENED
PART NUMBER:
47-60-2X0-Y0 SHOWN

UNFASTENED
PART NUMBER:
47-60-2X0-Y0 SHOWN



SCALE: 4:1

TORX® IS A REGISTERED TRADEMARK OF THE CAMCAR DIVISION OF TETTRON, INC.