

REV	DATE	DRAWN/CHKD	DESCRIPTION
A	23OCT2002	AJH/VNI	PRN: P2002-0826
B	04FEB2003	AJH/VNI	PRN: P2003-0090
C	26MAR2003	DLH/AJH	PRN: P2003-0203
D	11AUG2003	DLH/AJH	PRN: P2003-0679

SCREW RECESS	PART NUMBER	SCREW PROJECTION		PANEL THICKNESS		B	L
		P-1	P-2	A MIN	A MAX		
No.2 PHILLIPS/SLOT	4C-PS-10-3T2-KEEE	.15	.35	.031	.063	.122	.158
	4C-PS-10-4T2-KEEE	.21	.41				
	4C-PS-10-3T3-KEEE	.15	.35				
	4C-PS-10-4T3-KEEE	.21	.41	.063	.094	.153	.190
T25 TORX [®] SLOT	4C-TS-10-3T2-KEEE	.15	.35	.031	.063	.122	.158
	4C-TS-10-4T2-KEEE	.21	.41				
	4C-TS-10-3T3-KEEE	.15	.35				
	4C-TS-10-4T3-KEEE	.21	.41	.063	.094	.153	.190

INCHES

ALL DIMENSIONS WITHOUT TOLERANCES ARE FOR REFERENCE ONLY.

THIRD ANGLE PROJECTION

B PAPER SIZE

MATERIAL AND FINISH:

KNOB: PC/ABS UL94 V0 RATED, FLAME RETARDANT; TRIARYLPHOSPHATE (DOES NOT CONTAIN BROMINATED, CHLORINATED, OR HALOGENATED ADDITIVES).

SCREW: HEAT TREATED LOW CARBON STEEL ZINC PLATE, CHROMATE PLUS SEALER

STANDOFF: ALUMINUM, NATURAL

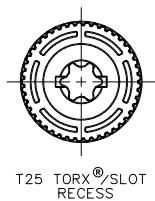
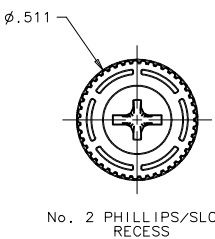
SPRING: 300 SERIES STAINLESS STEEL, PASSIVATED

WASHER: 300 SERIES STAINLESS STEEL, PASSIVATED

"EEE" KNOB COLOR

000 - BLACK

FOR ADDITIONAL COLORS SEE J-47-0-3

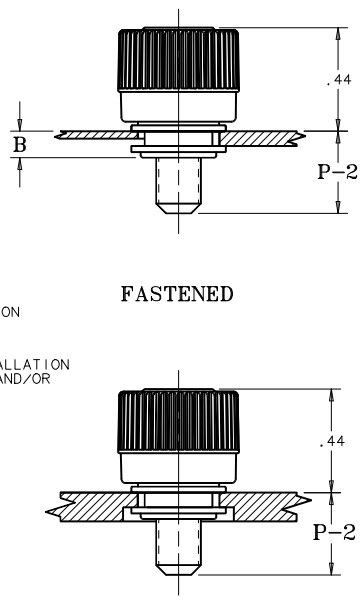
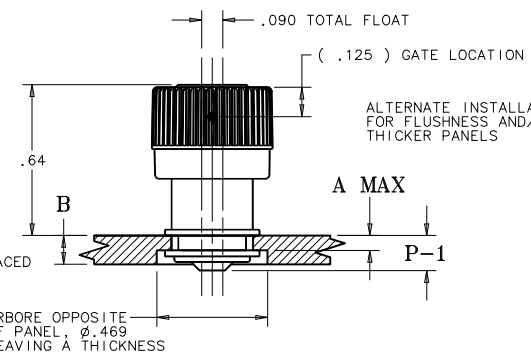
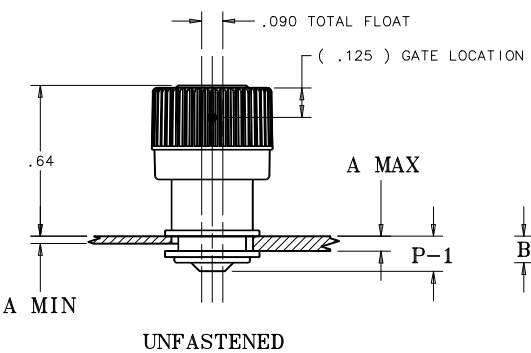
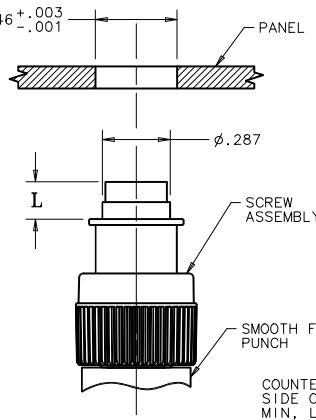
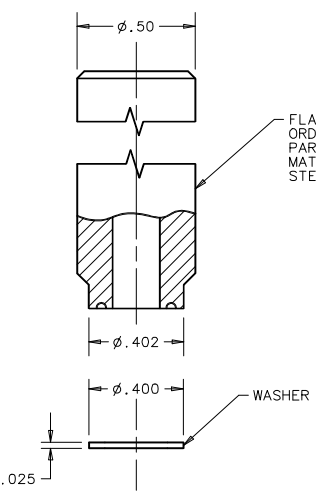


NOTES:

- A. GATE NOT ORIENTED WITH RECESS OR FRAME BREAK.
- B. FLASH HEIGHT GREATER THAN .010 NOT ACCEPTABLE.
- C. SURFACE IMPERFECTIONS: INSPECT PARTS FROM 2 FEET FOR 3 SECONDS. FOUR SURFACE IMPERFECTIONS MAX PER PART. SURFACE IMPERFECTIONS NO LARGER THAN .090 IN DIAMETER, HEIGHT, OR WIDTH.
- D. KNOB AND SCREW ARE SPRING LOADED OUTWARD, AS SHOWN BELOW.

TO INSTALL FASTENER:

1. DRILL OR PUNCH HOLE AS SHOWN BELOW.
2. PLACE FERRULE INTO INSTALLATION HOLE.
3. CENTER TOOL ON THE SCREW THREAD, THEN ROLL FERRULE OVER WASHER TO CAPTIVATE THE ASSEMBLY.
4. PUNCH CANNOT TOUCH PLASTIC DURING INSTALLATION.



PANEL PREPARATION