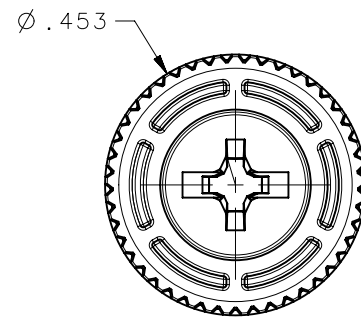
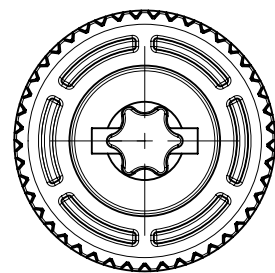


TORX® IS A REGISTERED TRADEMARK OF THE CAMCAR DIVISION OF TEXTRON, INC.

REVISION HISTORY			
REV	DATE	BY	DESCRIPTION
G	04SEP2018	CBI/DMS	PRN: P2018-2080



NO.2 PHILLIPS/SLOT RECESS

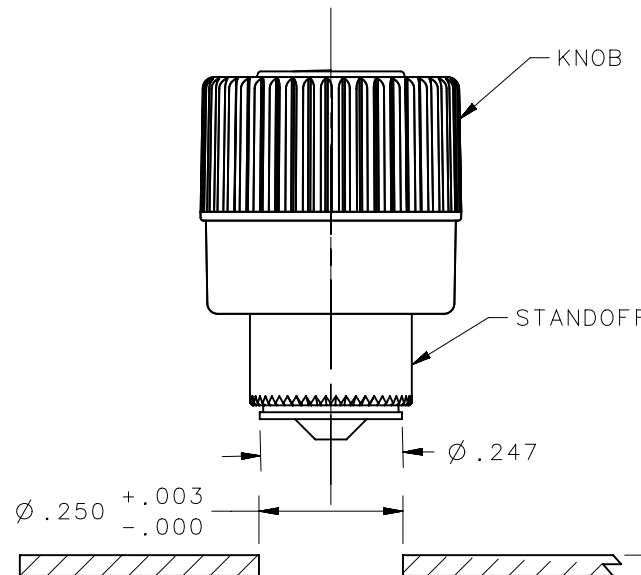


T15 TORX®/SLOT RECESS

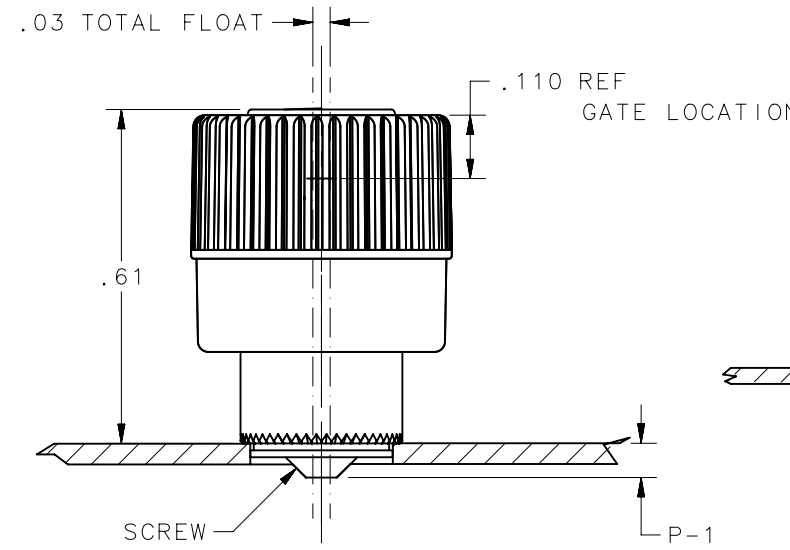
MATERIAL AND FINISH:  
 KNOB: PC/ABS UL94 VO RATED FLAME RETARDANT: TRIARYLPHOSPHATE (DOES NOT CONTAIN BROMINATED, CHLORINATED, OR HALOGENATED ADDITIVES).  
 SCREW: HEAT TREATED LOW CARBON STEEL ZINC PLATE, CHROMATE PLUS SEALER.  
 STANDOFF: LOW CARBON STEEL; ZINC PLATE, CHROMATE PLUS SEALER.  
 SPRING: 300 SERIES STAINLESS STEEL, PASSIVATED.

- NOTES:
- A. GATE NOT ORIENTED WITH RECESS OR FRAME BREAK.
  - B. FLASH HEIGHT GREATER THAN .010 NOT ACCEPTABLE.
  - C. SURFACE IMPERFECTIONS: INSPECT PARTS FROM 2 FEET FOR 3 SECONDS FOUR SURFACE IMPERFECTIONS MAX PER PART. SURFACE IMPERFECTIONS NO LARGER THAN .090 IN DIAMETER, HEIGHT OR WIDTH.
  - D. KNOB AND SCREW ARE SPRING LOADED OUTWARD, AS SHOWN BELOW.

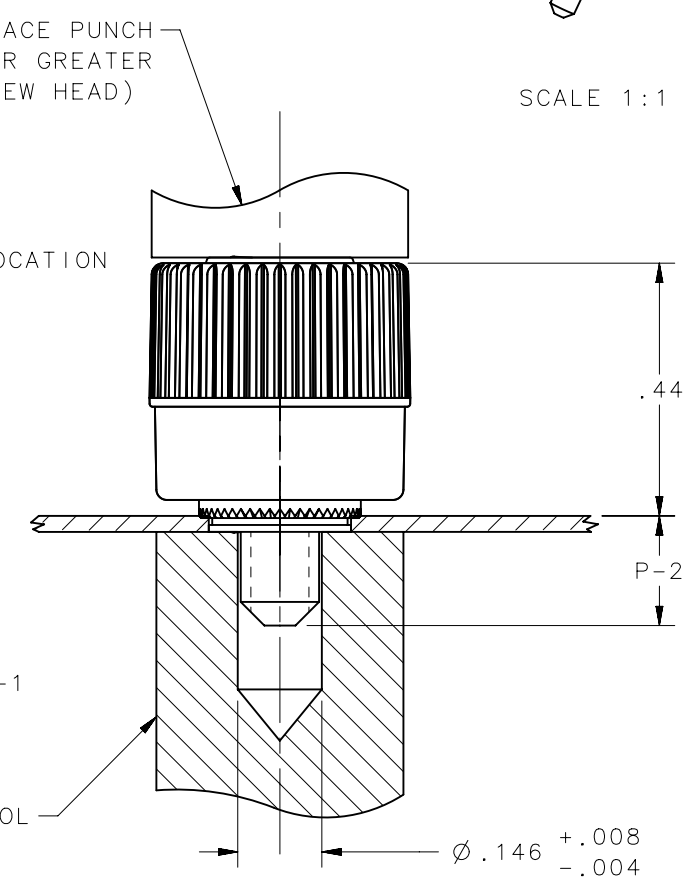
- TO INSTALL FASTENER:
1. DRILL OR PUNCH HOLE AS SHOWN BELOW.
  2. PLACE STANDOFF INTO INSTALLATION HOLE.
  3. PROVIDE SOLID BACK-UP BEHIND HOLE WITH CLEARANCE HOLE FOR SCREW AS SHOWN BELOW.
  4. PRESS PART INTO PANEL UNTIL RECOMMENDED LOAD IS APPLIED.
  5. PUNCH CANNOT TOUCH PLASTIC DURING INSTALLATION.



PANEL PREPARATION



UNFASTENED



FASTENED

SMOOTH FACE PUNCH (DIAMETER GREATER THAN SCREW HEAD)

SCALE 1:1

.036 MINIMUM PANEL THICKNESS

"EEE" KNOB COLOR  
 000-BLACK  
 FOR ADDITIONAL COLORS SEE J-47-0-3

4C-TS-06-2PO-KEEE	T15 TORX®/SLOT	.09	.26	.036	-
4C-TS-06-1PO-KEEE		.03	.20		
4C-PS-06-2PO-KEEE	NO.2 PHILLIPS/SLOT	.09	.26	MIN	MAX
4C-PS-06-1PO-KEEE		.03	.20		
PART NUMBER	TYPE OF COMPONENT	P-1	P-2	MIN	MAX
		SCREW PROJECTION		PANEL THICKNESS	

THIRD ANGLE PROJECTION		
INCHES [MM]		
TOLERANCES UNLESS OTHERWISE NOTED	DESCRIPTION	
2 PLACE DECIMALS ±.02	SOUTHCO NO.4C CAPTIVE FASTENER	
3 PLACE DECIMALS ±.010	6-32 THREAD, PRESS-IN STYLE	
4 PLACE DECIMALS ±.0010	SIZE	DWG NO.
PROPRIETARY ITEM	B NX	J-4C-3-632
EXCEPT FOR USES EXPRESSLY GRANTED IN WRITING, INFORMATION DISCLOSED HEREON IS CONFIDENTIAL AND ALL RIGHTS, PATENT AND OTHERWISE, ARE RESERVED BY SOUTHCO, INC.	PER ASME Y14.5M-1994	DATE
	RJB/MDM	15 JUL 2002
	SCALE	SHEET
	3:1	1 OF 1