

REVISION HISTORY

REV	DATE	BY	DESCRIPTION
G	31DEC2024	PSP/SAK	PRN: P2025-0038

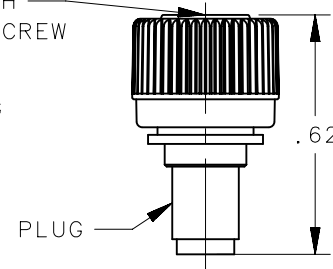
P/N: 4C-SM-1111-K000 SHOWN



SCALE 1:1

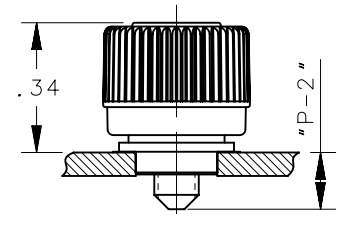
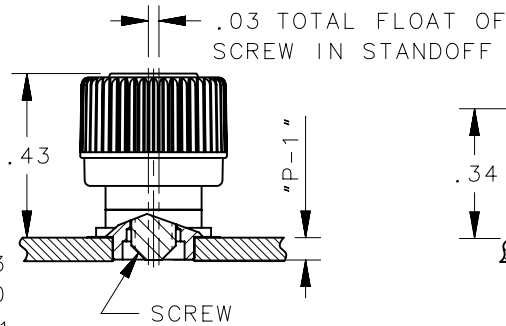
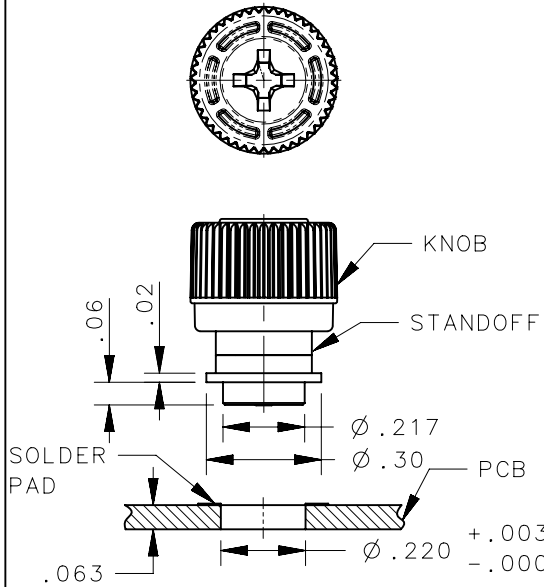
POLYIMIDE TAPE PATCH
ON TOP SURFACE OF SCREW
FOR VACUUM PICK UP

PACKED WITH PLUG

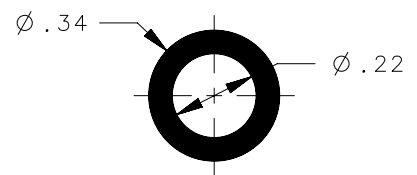


NOTES:

- A. MATERIAL AND FINISH: RoHS COMPLIANT
SCREW: STEEL, HARDENED, ZINC PLATE PLUS SEALER
SPRING: STAINLESS STEEL, PASSIVATED
STANDOFF: STEEL, TIN PLATE
KNOB: HIGH HEAT RESISTANCE PLASTIC
PLUG: SILICONE RUBBER
PATCH: POLYIMIDE
- B. INSTALLATION INSTRUCTION:
 1. PREPARE HOLE AND SOLDER PAD AS SHOWN. HOLE DIAMETER, INCLUDING TOLERANCE, IS FINAL SIZE.
 2. PRINT THE PCB BOARD WITH SOLDER PASTE. THE SOLDER PASTE SHOULD COVER THE SOLDER PAD.
 3. SMT MACHINE TO PICK AND PLACE THE WHOLE SCREW WITH PATCH AND PLUG INTO LOCATED PANEL HOLES.
 4. THE PC BOARDS WILL CONTINUE THROUGH THE SET UP HEAT SOLDERING CHAMBER AND FINISH THE CYCLE. MAXIMUM TEMP 535°F (280°C). NITROGEN ATMOSPHERE RECOMMENDED TO DIMINISH DISCOLORATION.
 5. THE PATCH AND PLUG ON SCREW WILL BE REMOVED AFTER SOLDERING DONE AND CANNOT BE REUSED.
 6. TO REMOVE THE PLUG: PULL SCREW HEAD UP TO UNFASTENED POSITION, THEN THE PLUG CAN BE PULLED OFF EASILY.
- C. TORX® IS REGISTERED TRADEMARK OF ACUMENT™ INTELLECTUAL PROPERTIES, LLC.
- D. COSMETIC SPECIFICATION: ALL SURFACES (UNLESS OTHERWISE SPECIFIED) ARE TO BE PER SOUTHCO SPECIFICATION S-121-02 AND S-121-04, CLASS B, STANDOFF CLASS C (REFER TO SECTION 1.0 FOR CROSS REFERENCE TABLE).
- E. SEE PAGE 2 FOR PACKAGE INFORMATION.



PANEL PREPARATION



(PASTE TO PAD 1:1)

D KNOB STYLES

- K - KNURLED
- N - SMOOTH

B RECESS STYLES

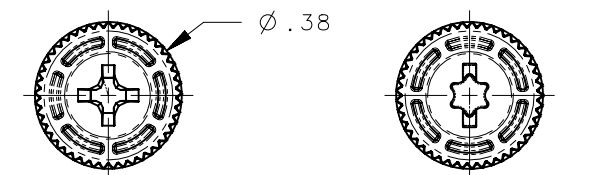
- 1 - No.2 PHILLIPS
- 4 - T10 TORX®/SLOT

EEE KNOB COLORS

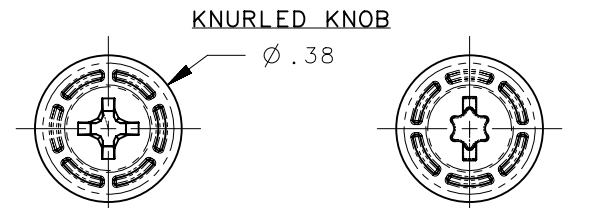
- 000 - BLACK
- SEE J-47-0-3 FOR ADDITIONAL COLORS

P PACKAGE

- R - REEL PACKAGE



No.2 PHILLIPS RECESS T10 TORX®/SLOT RECESS



No.2 PHILLIPS RECESS T10 TORX®/SLOT RECESS

KNURLED KNOB SMOOTH KNOB

4C-SM-1B21-DEEE-P	.13	.22	.063
4C-SM-1B11-DEEE-P	.06	.15	.063
PART NUMBER	"P-1"	"P-2"	PANEL THICKNESS

THIRD ANGLE PROJECTION

INCHES [MM]

TOLERANCES UNLESS OTHERWISE NOTED

ALL DIMENSIONS WITHOUT TOLERANCES ARE FOR REFERENCE ONLY.

southco[®]
CONNECT • CREATE • INNOVATE

DESCRIPTION
4C-SM CAPTIVE FASTENER ASSEMBLY
4-40 THREAD

SIZE A4 SYSTEM NX DWG NO. J-4C-SM-440

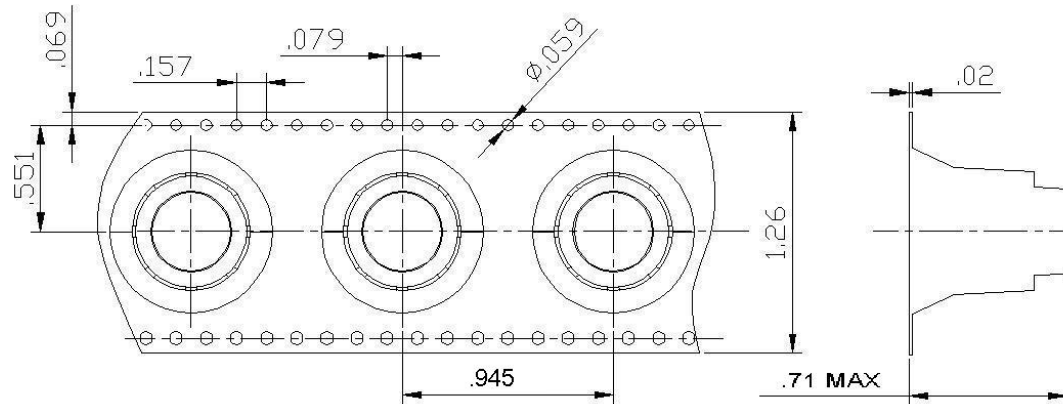
PER ASME Y14.5M-1994 DRAWN BY JQ/TVA DATE 30MAR2012 SCALE 2:1 SHEET 1 OF 2

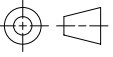

PROPRIETARY ITEM
EXCEPT FOR USES EXPRESSLY GRANTED IN WRITING, INFORMATION DISCLOSED HEREON IS CONFIDENTIAL AND ALL RIGHTS, PATENT AND OTHERWISE, ARE RESERVED BY SOUTHCO, INC.

REVISION HISTORY			
REV	DATE	BY	DESCRIPTION
G	31DEC2024	PSP/SAK	PRN: P2025-0038

DIMENSIONS ARE IN INCHES.

REEL PACKAGE: 13 INCH REEL PER EIA-481, 150 PIECES PER REEL



	THIRD ANGLE PROJECTION					 CONNECT • CREATE • INNOVATE			
	INCHES [MM]								
	TOLERANCES UNLESS OTHERWISE NOTED	DESCRIPTION				4C-SM CAPTIVE FASTENER ASSEMBLY			
	ALL DIMENSIONS WITHOUT TOLERANCES ARE FOR REFERENCE ONLY.					4-40 THREAD			
PROPRIETARY ITEM		SIZE	SYSTEM	DWG NO.					
EXCEPT FOR USES EXPRESSLY GRANTED IN WRITING, INFORMATION DISCLOSED HEREON IS CONFIDENTIAL AND ALL RIGHTS, PATENT AND OTHERWISE, ARE RESERVED BY SOUTHCO, INC.		A4	NX	J-4C-SM-440					
	PER ASME Y14.5M-1994	DRAWN BY	DATE	SCALE	SHEET				
		JQ/TVA	30MAR2012	2:1	2 OF 2				