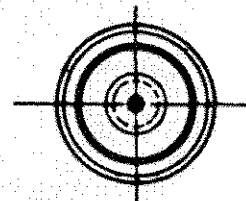
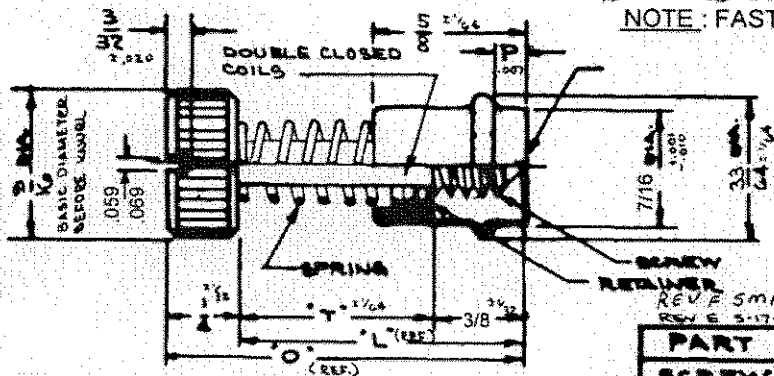


NOTE: FASTENER SHIPPED UNASSEMBLED



REV. P 5 MAR 93 JRR PRN: 5-1-03
 REV. E 5-17-77 TOL PRN: 120-14 REV. F 4-18-82 JEL PRN: 2-1-91
 REV. G 11-29-69 JEL PRN: 4-4-82 REV. B 4-4-62 TPL REVISED SPRING

PART	MATERIAL	FINISH
SCREW	STAINLESS STEEL	PASSIVATE
STAND-OFF	STAINLESS STEEL	PASSIVATE
RETAINER	STAINLESS STEEL	PASSIVATE
SPRING	STAINLESS STEEL	PASSIVATE

PROPRIETARY ITEM—EXCEPT FOR USES EXPRESSLY GRANTED IN WRITING, INFORMATION DISCLOSED HEREIN IS CONFIDENTIAL AND ALL RIGHTS, PATENT AND OTHERWISE, ARE RESERVED BY SOUTHCO, INC.

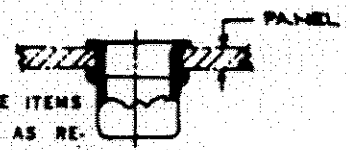
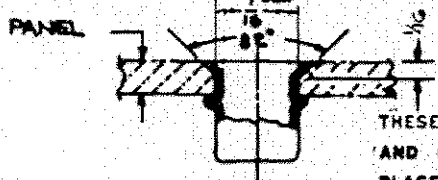
ASSEMBLY PART NUMBERS

SLOTTED		UNBLOTTED		T	L	O	P
1/4-20 UNC-2A	1/4-20 UNF-2A	1/4-20 UNC-2A	1/4-20 UNF-2A				
53-11-410-24	53-14-410-24	53-21-410-24	53-24-410-24	1/8			
53-11-510-24	53-14-510-24	53-21-510-24	53-24-510-24	3/16			
53-11-610-24	53-14-610-24	53-21-610-24	53-24-610-24	1/4			
53-11-411-24	53-14-411-24	53-21-411-24	53-24-411-24	1/8			
53-11-511-24	53-14-511-24	53-21-511-24	53-24-511-24	3/16			
53-11-611-24	53-14-611-24	53-21-611-24	53-24-611-24	1/4			
53-11-412-24	53-14-412-24	53-21-412-24	53-24-412-24	1/8			
53-11-512-24	53-14-512-24	53-21-512-24	53-24-512-24	3/16			
53-11-612-24	53-14-612-24	53-21-612-24	53-24-612-24	1/4			
53-11-413-24	53-14-413-24	53-21-413-24	53-24-413-24	1/8			
53-11-513-24	53-14-513-24	53-21-513-24	53-24-513-24	3/16			
53-11-613-24	53-14-613-24	53-21-613-24	53-24-613-24	1/4			
53-11-414-24	53-14-414-24	53-21-414-24	53-24-414-24	1/8			
53-11-514-24	53-14-514-24	53-21-514-24	53-24-514-24	3/16			
53-11-614-24	53-14-614-24	53-21-614-24	53-24-614-24	1/4			
53-11-415-24	53-14-415-24	53-21-415-24	53-24-415-24	1/8			
53-11-515-24	53-14-515-24	53-21-515-24	53-24-515-24	3/16			
53-11-615-24	53-14-615-24	53-21-615-24	53-24-615-24	1/4			
53-11-416-24	53-14-416-24	53-21-416-24	53-24-416-24	1/8			
53-11-516-24	53-14-516-24	53-21-516-24	53-24-516-24	3/16			
53-11-616-24	53-14-616-24	53-21-616-24	53-24-616-24	1/4			

INSTALLATION METHOD 'A'

INSTALLATION METHOD 'B'

FOR FASTENER INSTALLATION SEE DWG. J-53-1



THESE ASSEMBLIES ARE NON-REPAIRABLE ITEMS AND COMPONENTS ARE NOT AVAILABLE AS REPLACEMENT OR REPAIR PARTS.

WHEN DIMENSION 'P' IS:	PANEL RANGE IS:	
	METHOD 'A'	METHOD 'B'
1/8	7/64 TO 9/64	1/16 TO 5/64
3/16	11/64 TO 13/64	3/32 TO 9/64
1/4	15/64 TO 17/64	5/32 TO 13/64

S. & DATE	APR			
4	B	J	D	4-12-82

SOUTHCO N° 53 FASTENER ASSEMBLIES 1/4-20 & 1/4-28 THREADS 3/16 DIA. HEAD

J-53-10

J-53-10