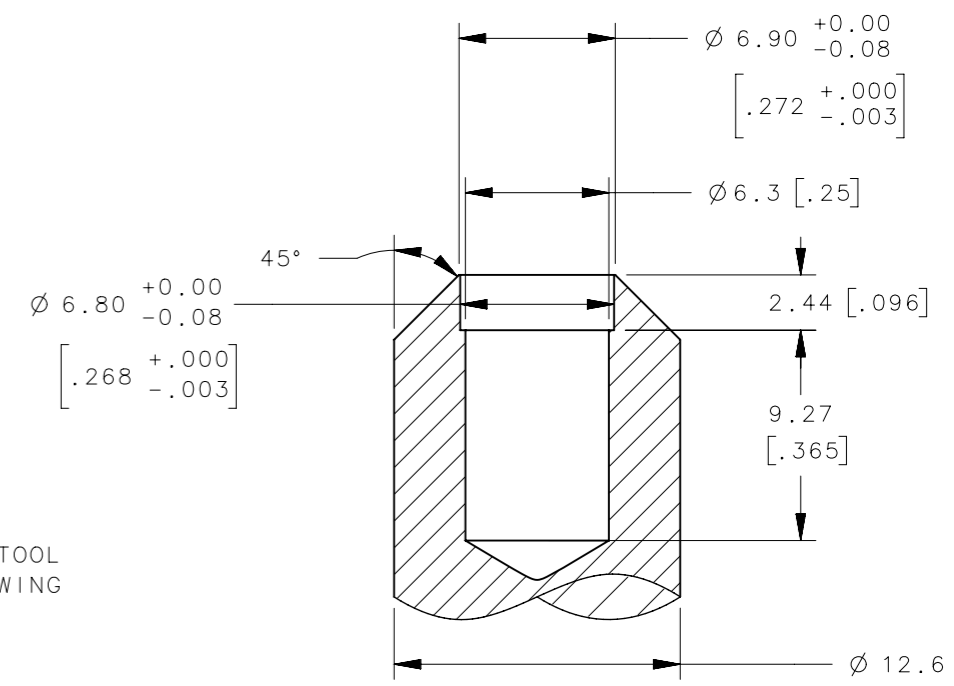
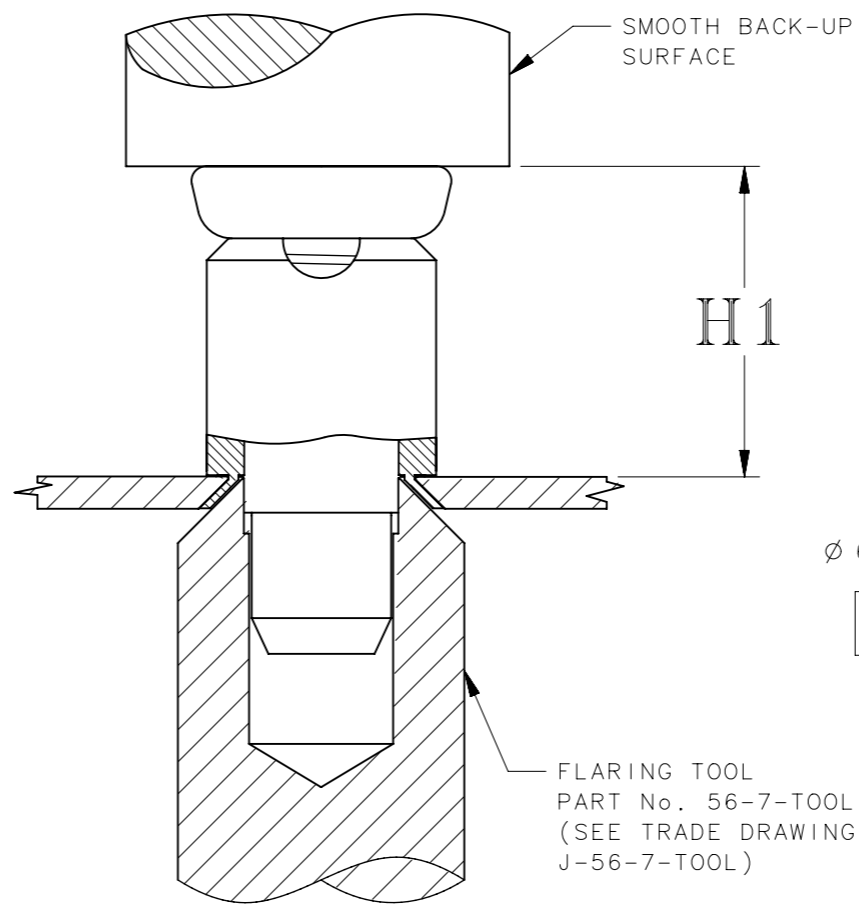
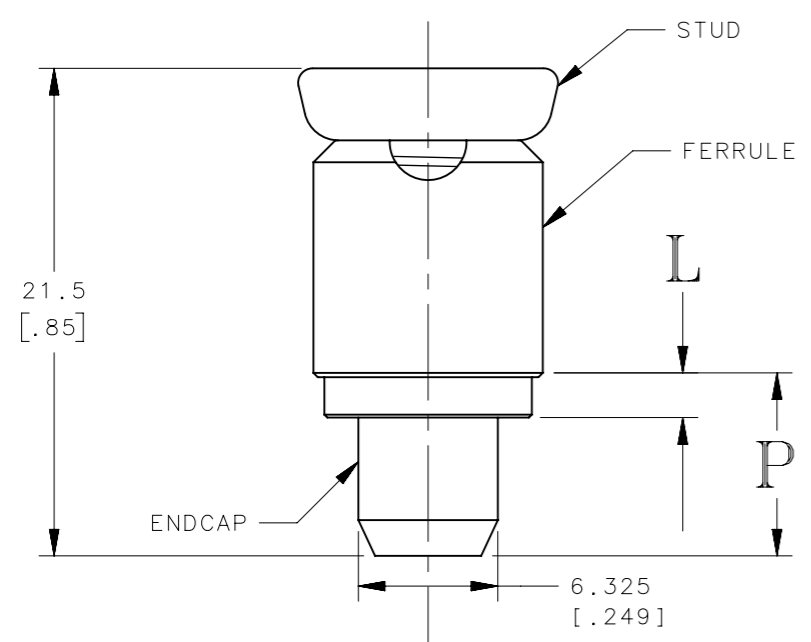
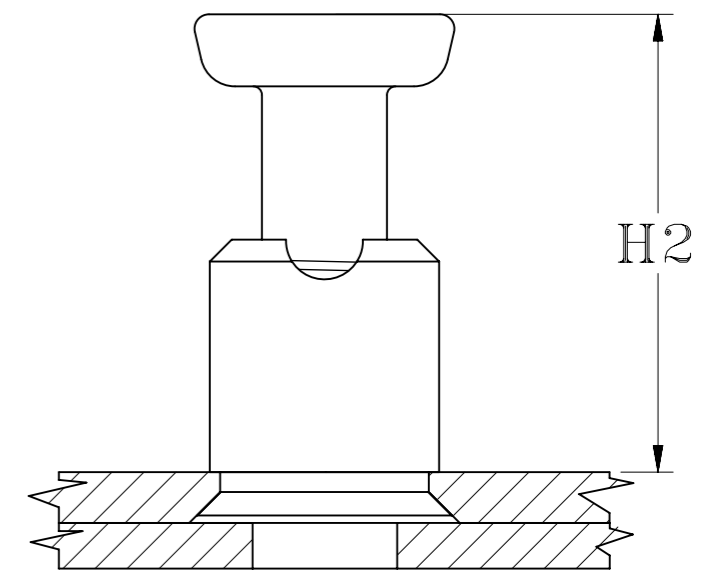
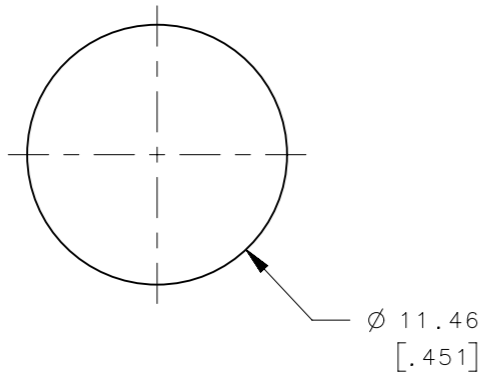


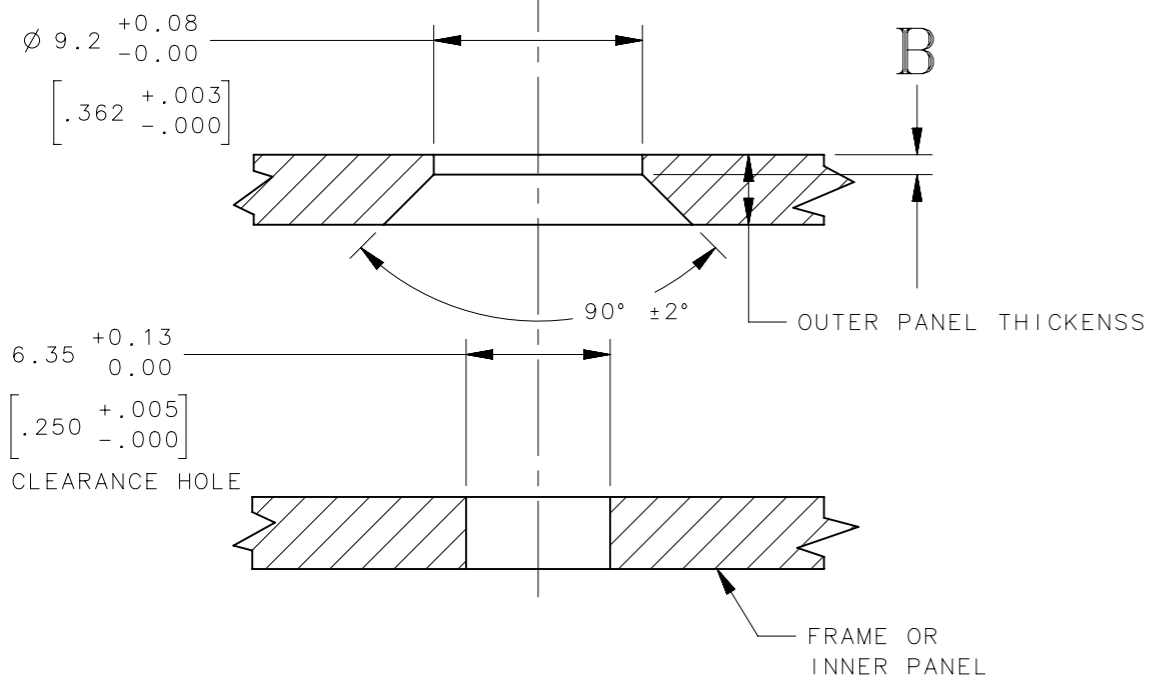
REVISION HISTORY			
REV	DATE	BY	DESCRIPTION
H	03JAN2020	CWA/YGC	PRN: P2020-0015

- NOTES:
- A. INSTALLATION INSTRUCTIONS:
1. DRILL OR PUNCH INSTALLATION HOLE.
 2. PLACE FERRULE INTO INSTALLATION HOLE.
 3. PROVIDE SOLID BACK-UP BEHIND HOLE WITH CLEARANCE HOLE FOR ENDCAP.
 4. FLARE FERRULE UNTIL SHOULDER IS FIRMLY AGAINST OUTER PANEL.
- B. MATERIAL AND FINISH:
- STUD - HARDNENED STEEL, ZINC PLATE PLUS SEALER
 - FERRULE - ALUMINUM, NATURAL
 - ENDCAP - STEEL, ZINC PLATE PLUS SEALER
 - SPRING - STAINLESS STEEL, PASSIVATED
- C. PARTS SHIPPED BULK.

PULL UP ON KNOB TO RETRACT STUD ROTATE 90° TO KEEP IN RETRACTED POSITION. ANOTHER 90° TURN RETURNS STUD TO NORMAL POSITION.



FLARING TOOL DETAIL



PANEL PREPARATION

ASSEMBLY PART No. 56-71-1-15 SHOWN

56-71-2-15	3.175 [.125]	4.7 [.185]	1.524 [.060]	3.30 [.130]	9.40 [.37]	12.192 [.48]	18.29 [.72]
56-71-1-15	1.524 [.060]	3.175 [.125]	.406 [.016]	1.78 [.070]	7.87 [.31]	13.72 [.54]	19.81 [.78]
	MIN	MAX					
PART NUMBER	OUTER PANEL THICKNESS		B ±.13 [.005]	L	P	H1	H2
	THIRD ANGLE PROJECTION						
	MILLIMETERS [IN]						
	TOLERANCES UNLESS OTHERWISE NOTED						
	ALL DIMENSIONS WITHOUT TOLERANCES ARE FOR REFERENCE ONLY.		<p>DESCRIPTION</p> <p>No. 56 SPRING LOADED PLUNGER ASSEMBLY, FLARE-IN STYLE, WITH STAY OPEN FEATURE</p>				
PROPRIETARY ITEM	SIZE	SYSTEM	DWG NO.				
EXCEPT FOR USES EXPRESSLY GRANTED IN WRITING, INFORMATION DISCLOSED HEREON IS CONFIDENTIAL AND ALL RIGHTS, PATENT AND OTHERWISE, ARE RESERVED BY SOUTHCO, INC.	A3	NX	J-56-71				
PER ASME Y14.5M-1994	DRAWN BY	DATE	SCALE	SHEET			
	RLR/CHW	07JAN2003	3:1	1 OF 1			

southco[®]
CONNECT • CREATE • INNOVATE

DESCRIPTION
No. 56 SPRING LOADED PLUNGER ASSEMBLY, FLARE-IN STYLE, WITH STAY OPEN FEATURE

SIZE SYSTEM DWG NO.
A3 NX J-56-71

DRAWN BY DATE SCALE SHEET
RLR/CHW 07JAN2003 3:1 1 OF 1