

southco

PROPRIETARY ITEM - EXCEPT FOR USES EXPRESSLY GRANTED IN WRITING INFORMATION DISCLOSED HEREON IS CONFIDENTIAL AND ALL RIGHTS PATENT AND OTHERWISE ARE RESERVED BY SOUTHCO, INC.

No. 85 1/4 TURN FASTENER
PHILLIPS RECESS


DATE: 16FEB2005
DRAWN: JSS
CHKD: HAR
SCALE: 1.5:1

DRAWING NUMBER: J-85-P-1

REV	DATE	DRAWN/CHKD	DESCRIPTION	PART NUMBER	U	L	F	T	PART NUMBER	U	L	F	T
D	16FEB2005	RLR/MDY	PRN: P2005-0176	85-P-060-XX	.165	.320	.505	.685	85-P-540-XX	.645	.800	.985	1.165
E	18DEC2008	MJS/MJS	PRN: P2008-1327	85-P-080-XX	.185	.340	.525	.705	85-P-560-XX	.665	.820	1.005	1.185
F	18FEB2021	CMS/JCG	PRN: P2021-0349	85-P-100-XX	.205	.360	.545	.725	85-P-580-XX	.685	.840	1.025	1.205
				85-P-120-XX	.225	.380	.565	.745	85-P-600-XX	.705	.860	1.045	1.225
				85-P-140-XX	.245	.400	.585	.765	85-P-620-XX	.725	.880	1.065	1.245
				85-P-160-XX	.265	.420	.605	.785	85-P-640-XX	.745	.900	1.085	1.265
				85-P-180-XX	.285	.440	.625	.805	85-P-660-XX	.765	.920	1.105	1.285
				85-P-200-XX	.305	.460	.645	.825	85-P-680-XX	.785	.940	1.125	1.305
				85-P-220-XX	.325	.480	.665	.845	85-P-700-XX	.805	.960	1.145	1.325
				85-P-240-XX	.345	.500	.685	.865	85-P-720-XX	.825	.980	1.165	1.345
				85-P-260-XX	.365	.520	.705	.885	85-P-740-XX	.845	1.000	1.185	1.365
				85-P-280-XX	.385	.540	.725	.905	85-P-760-XX	.865	1.020	1.205	1.385
				85-P-300-XX	.405	.560	.745	.925	85-P-780-XX	.885	1.040	1.225	1.405
				85-P-320-XX	.425	.580	.765	.945	85-P-800-XX	.905	1.060	1.245	1.425
				85-P-340-XX	.445	.600	.785	.965	85-P-820-XX	.925	1.080	1.265	1.445
				85-P-360-XX	.465	.620	.805	.985	85-P-840-XX	.945	1.100	1.285	1.465
				85-P-380-XX	.485	.640	.825	1.005	85-P-860-XX	.965	1.120	1.305	1.485
				85-P-400-XX	.505	.660	.845	1.025	85-P-880-XX	.985	1.140	1.325	1.505
				85-P-420-XX	.525	.680	.865	1.045	85-P-900-XX	1.005	1.160	1.345	1.525
				85-P-440-XX	.545	.700	.885	1.065	85-P-920-XX	1.025	1.180	1.365	1.545
				85-P-460-XX	.565	.720	.905	1.085	85-P-940-XX	1.045	1.200	1.385	1.565
				85-P-480-XX	.585	.740	.925	1.105	85-P-960-XX	1.065	1.220	1.405	1.585
				85-P-500-XX	.605	.760	.945	1.125	85-P-980-XX	1.085	1.240	1.425	1.605
				85-P-520-XX	.625	.780	.965	1.145	85-P-1000-XX	1.105	1.260	1.445	1.625

INCHES

ALL DIMENSIONS WITHOUT TOLERANCES ARE FOR REFERENCE ONLY.



THIRD ANGLE PROJECTION

A PAPER SIZE

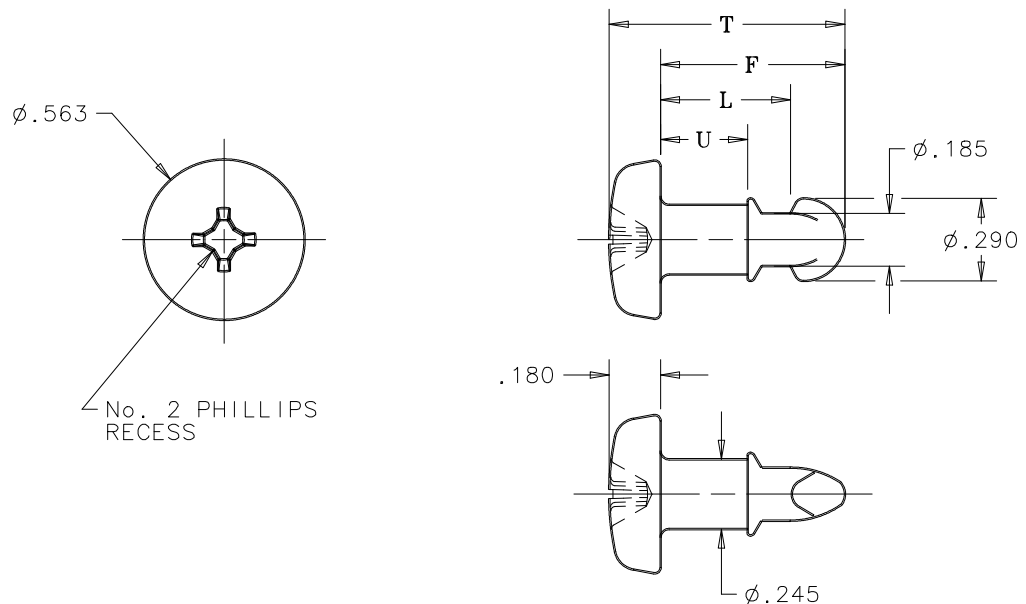
NOTES:

A. MATERIAL AND FINISH:

XX = 16
MATERIAL: CARBON STEEL, CASE HARDENED
FINISH: ZINC PLATED, CHROMATE PLUS SEALER.

XX = 20
MATERIAL: STAINLESS STEEL
FINISH: PASSIVATED.

XX = 69
MATERIAL: CARBON STEEL, CASE HARDENED
FINISH: ZINC-NICKEL ALLOY WITH TRIVALENT CHROMATE FINISH.



No. 2 PHILLIPS RECESS