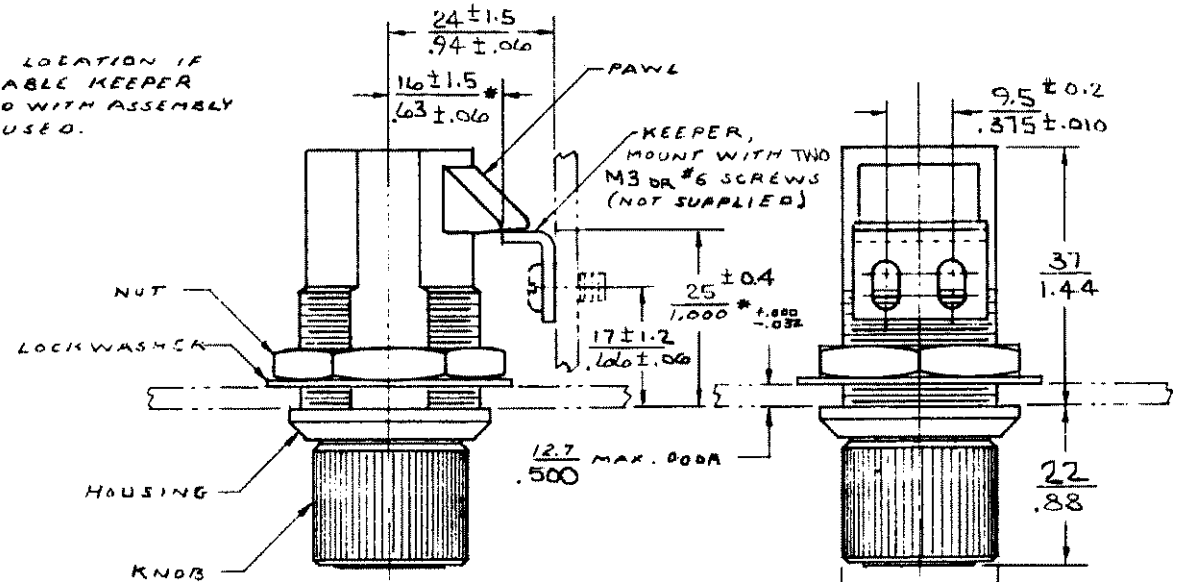
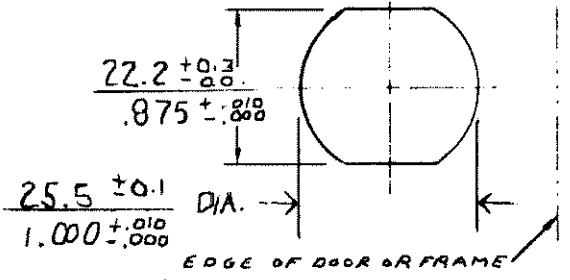


REV. LET.	DATE	BY-CHKD	REVISIONS	ASSY PART NO
M	11-16-82	CML	DELETED PREVIOUS REV'S - SEE REVISION PRINT, PRN: 93-81	93-10-102-10
I	5-14-91		ADDED TOL. TO MOUNTING HOLE	
J	10 JAN 93		PLN: 5-1023	
K	6-10-93	JGK	FRN: 93-137	

* FRAME LOCATION IF ADJUSTABLE KEEPER SUPPLIED WITH ASSEMBLY IS NOT USED.



DOOR PREPARATION



ASSEMBLY PART No. 93-10-102-10 CONSISTS OF 1 LATCH SUB-ASS'Y. 2 KEYS 1 NUT, 1 LOCKWASHER & 1 KEEPER PACKED IN A PLASTIC BAG.

HOUSING- DIE CAST ZINC, BRIGHT CHROME PLATED.

KNOB & PAWL ARE BLACK THERMOPLASTIC

KEEPER & LOCKWASHER ARE STEEL DACROTIZED

PLUG IN KNOB IS ALUMINUM, BLACK ORGANIC COATING.

NUT IS DIE CAST ZINC, CHEM. PROTECTIVE FILM

LATCH MAY BE INSTALLED IN A ROUND HOLE IF NUT IS TIGHTENED SUFFICIENTLY TO PREVENT TURNING OF HOUSING

KEY TURNS 1/2 TURN CLOCKWISE TO LOCK, 1/2 TURN COUNTERCLOCKWISE TO UNLOCK. KEY IS REMOVEABLE IN LOCKED & UNLOCKED POSITIONS

KNOB TURNS 1/4 TURN IN EITHER DIRECTION TO UNLATCH.

MAY BE SLAM CLOSED WHEN LOCKED

MILLIMETER/INCH
 MILLIMETER INCH

TM METAL COATINGS INT INC

PROPRIETARY ITEM - EXCEPT FOR USES EXPRESSLY GRANTED IN WRITING, INFORMATION DISCLOSED HEREON IS CONFIDENTIAL AND ALL RIGHTS, PATENT

TOLERANCE UNLESS OTHERWISE NOTED
 METRIC MM - TWO PLACE (.XX) ± ONE PLACE (.X) ±
 INCH - DECIMALS () FRACTIONS () ANGLES ()

DRAWING NUMBER
 J-93-10-102-10