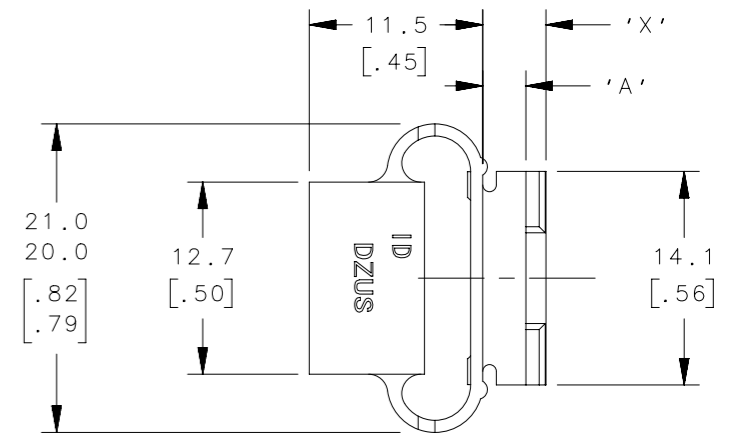
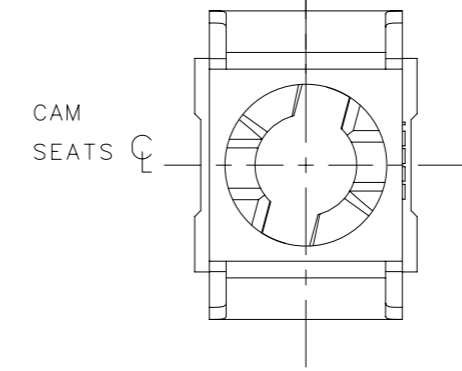
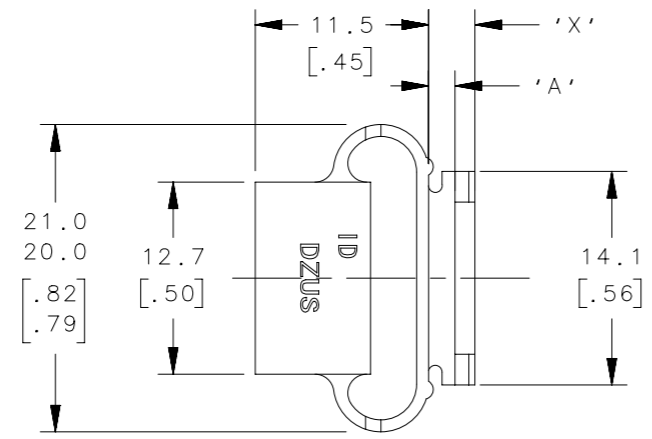
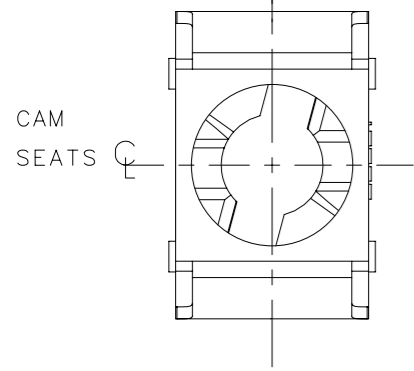
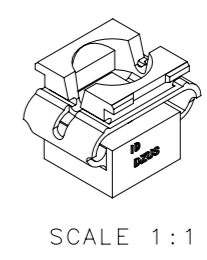
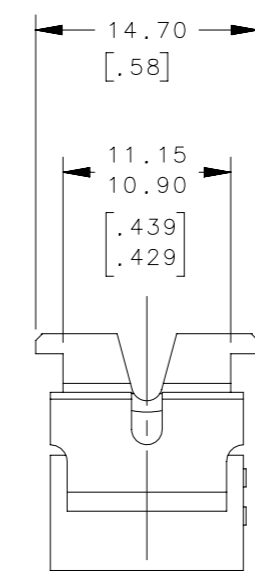
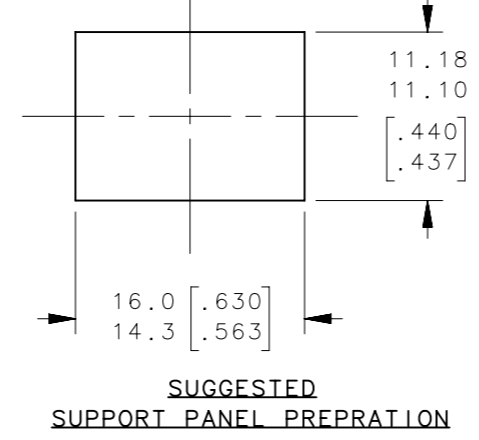
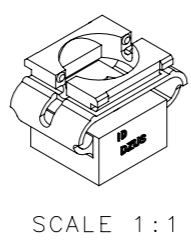
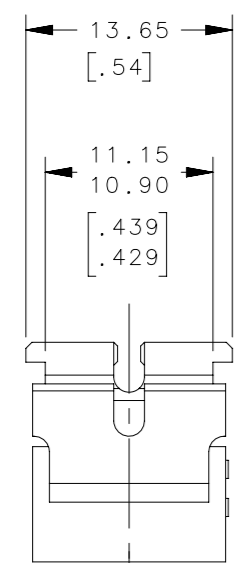
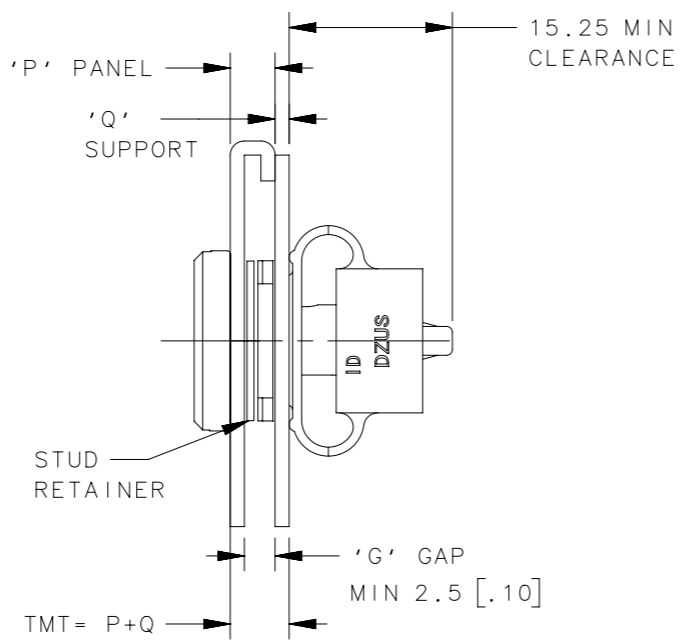
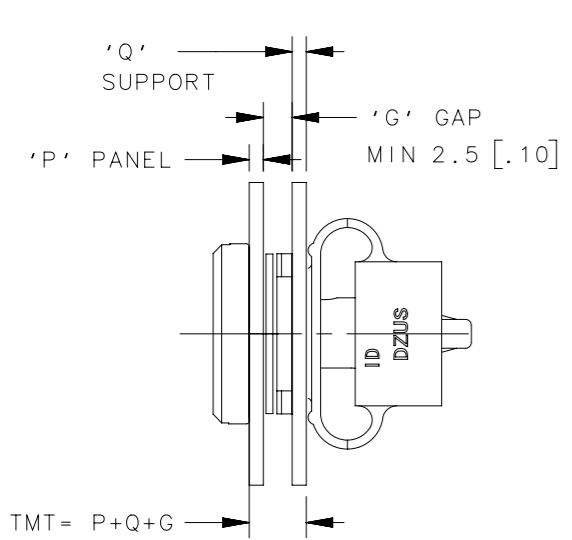


REVISION HISTORY			
REV	DATE	BY	DESCRIPTION
C	06JUL2013	MWC/YGC	PRN: P2013-1385



D1-004-012-010

D1-004-013-010



SCALE 3:2

STUD LENGTH SELECTOR		
TMT (mm)	TMT (INCHES)	L - DIMENSION
4.15 - 5.41	.163 - .213	045
5.42 - 6.68	.213 - .263	050
6.69 - 7.95	.263 - .313	055
7.96 - 9.22	.313 - .363	060
9.23 - 10.49	.363 - .413	065
10.50 - 11.76	.413 - .463	070
11.77 - 13.03	.463 - .513	075
13.04 - 14.30	.513 - .563	080
14.31 - 15.57	.563 - .613	085
15.58 - 16.84	.613 - .663	090
16.85 - 18.11	.663 - .713	095
18.12 - 19.38	.713 - .763	100

D1-004-013-010	RECEPTACLE	ACETAL	COLOR - BLACK	2.5-3.0 (.099-.118)	4.1-4.4 (.161-.173)	1.29-2.54 (.051-.100)
D1-004-012-010				1.5-2.0 (.059-.079)	2.91-3.21 (.115-.126)	0.80-1.27 (.032-.050)
PART NUMBER	TYPE OF COMPONENT	MATERIAL	FINISH	'A' DIM	'X' DIM	SUPPORT THICKNESS

**INSTALLATION PROCEDURE:**  
 1) ANGLE LONGEST CLIP EDGE INTO PANEL HOLE FROM THE UNDERSIDE.  
 2) PUSH THE REMAINING CLIP THROUGH THE PANEL HOLE WITH A FLAT BLADE SCREWDRIVER OR INSTALLATION TOOL 29-DP134-9-12

THIRD ANGLE PROJECTION		
MILLIMETERS [IN]		
SURFACE AREA	TOLERANCES UNLESS OTHERWISE NOTED	DESCRIPTION
VOLUME	ALL DIMENSIONS WITHOUT TOLERANCES ARE FOR REFERENCE ONLY.	DART - MINI SNAP IN BACK LOAD RECEPTACLE
PROPRIETARY ITEM	PER ASME Y14.5M-1994	SIZE A3 SYSTEM NX DWG NO. J-D1-004-01X-010
EXCEPT FOR USES EXPRESSLY GRANTED IN WRITING, INFORMATION DISCLOSED HEREON IS CONFIDENTIAL AND ALL RIGHTS, PATENT AND OTHERWISE, ARE RESERVED BY SOUTHCO, INC.	DRAWN BY DC	DATE 02AUG2005 SCALE 2:1 SHEET 1 OF 1