

PART NUMBER	STUD DIMENSIONS	
	'A' ±0.25	'L' ±0.15
D3-376-215-1XX	18	15
D3-376-216-1XX	19	16
D3-376-217-1XX	20	17
D3-376-218-1XX	21	18
D3-376-219-1XX	22	19
D3-376-220-1XX	23	20
D3-376-221-1XX	24	21
D3-376-222-1XX	25	22
D3-376-223-1XX	26	23
D3-376-224-1XX	27	24
D3-376-225-1XX	28	25
D3-376-226-1XX	29	26
D3-376-227-1XX	30	27
D3-376-228-1XX	31	28
D3-376-229-1XX	32	29
D3-376-230-1XX	33	30
D3-376-231-1XX	34	31
D3-376-232-1XX	35	32
D3-376-233-1XX	36	33
D3-376-234-1XX	37	34
D3-376-235-1XX	38	35
D3-376-236-1XX	39	36
D3-376-237-1XX	40	37
D3-376-238-1XX	41	38

NOTES:

1. EXAMPLE PART NUMBER:

D3-376-2XX-1XX

BASIC PART NUMBER

INDICATES HEAD STYLE

INDICATES LENGTH

1XX : FINISH

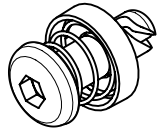
170 : BRIGHT CHROME

190 : ZINC PLATE BRIGHT CHROMATE

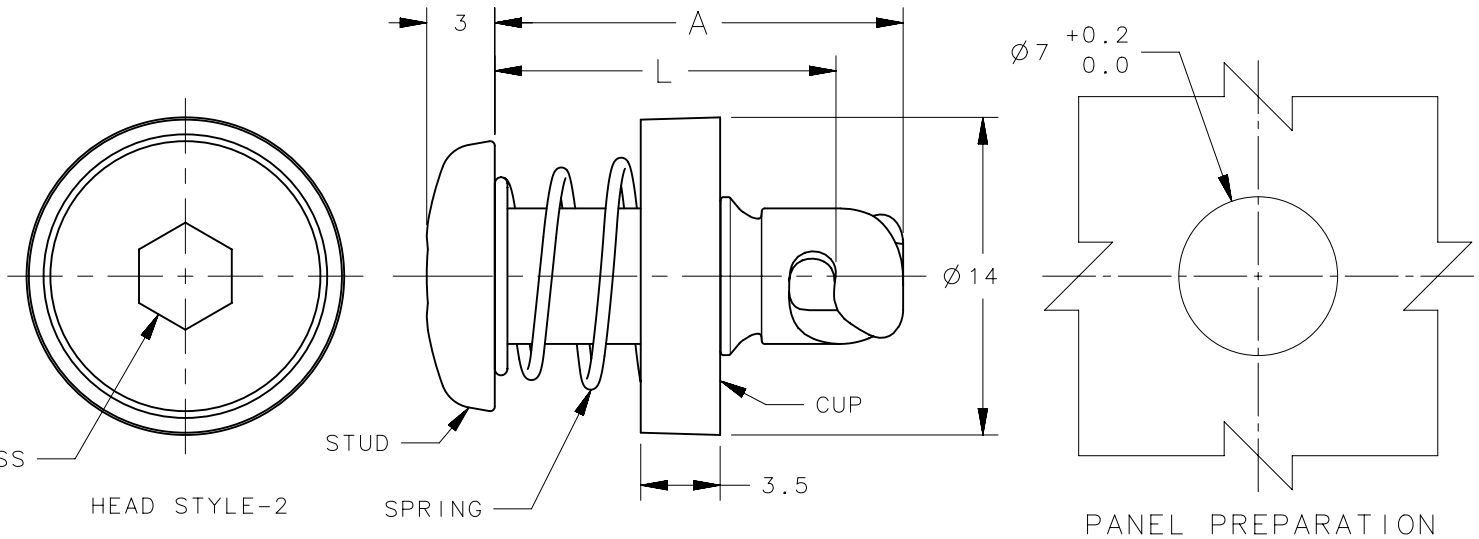
191 : ZINC PLATE BLACK CHROMATE

2. RECOMMENDED MINIMUM STUD LENGTH 'L' = 15.

REVISION HISTORY			
REV	DATE	BY	DESCRIPTION
B	26MAR2015	DMS/YGC	PRN: P2015-0627



SCALE 1:1



3	-	1	STUD	CARBON STEEL	SEE NOTE 1
2	-	1	SPRING	STAINLESS STEEL	PASSIVATED
1	-	1	CUP	THERMOPLASTIC	COLOR-BLACK GLOSS
-	D3-376-2XX-1XX	1	STUD ASSEMBLY	-	SEE NOTE 1
NO.	PART NUMBER	QTY	TYPE OF COMPONENT	MATERIAL	FINISH

THIRD ANGLE PROJECTION		 CONNECT • CREATE • INNOVATE			
MILLIMETERS [IN]					
TOLERANCES UNLESS OTHERWISE NOTED		DESCRIPTION			
SURFACE AREA		HEX RECESS SPRING			
VOLUME		EJECT ASSEMBLY			
PROPRIETARY ITEM <small>EXCEPT FOR USES EXPRESSLY GRANTED IN WRITING, INFORMATION DISCLOSED HEREON IS CONFIDENTIAL AND ALL RIGHTS, PATENT AND OTHERWISE, ARE RESERVED BY SOUTHCO, INC.</small>		ALL DIMENSIONS WITHOUT TOLERANCES ARE FOR REFERENCE ONLY.	SIZE A4	SYSTEM NX	DWG NO. J-D3-376-2XX-1XX
PER ASME Y14.5M-1994		DRAWN BY VWA/VGV	DATE 28FEB2007	SCALE 3:1	SHEET 1 OF 1