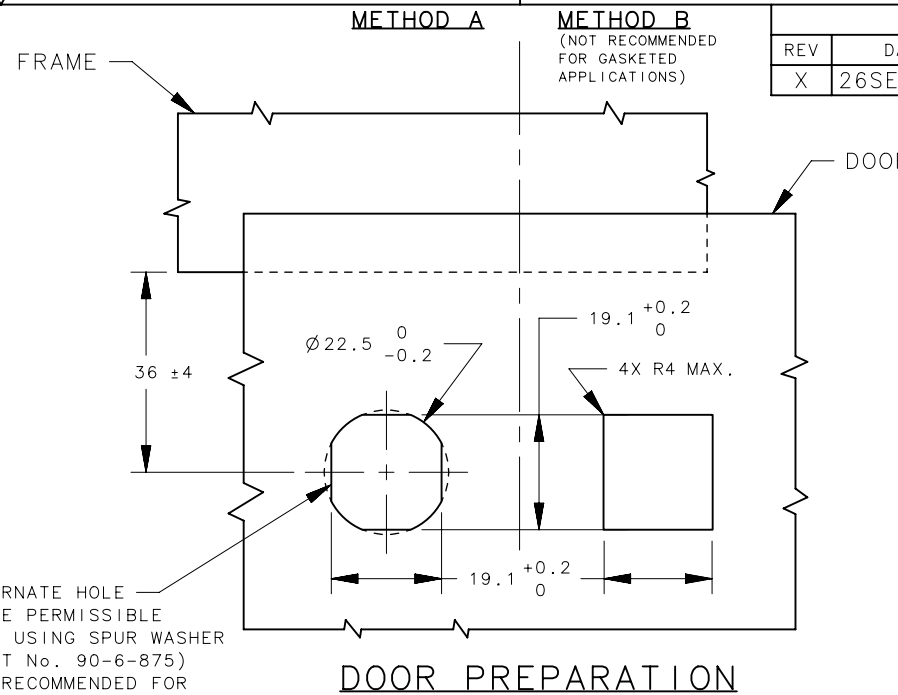
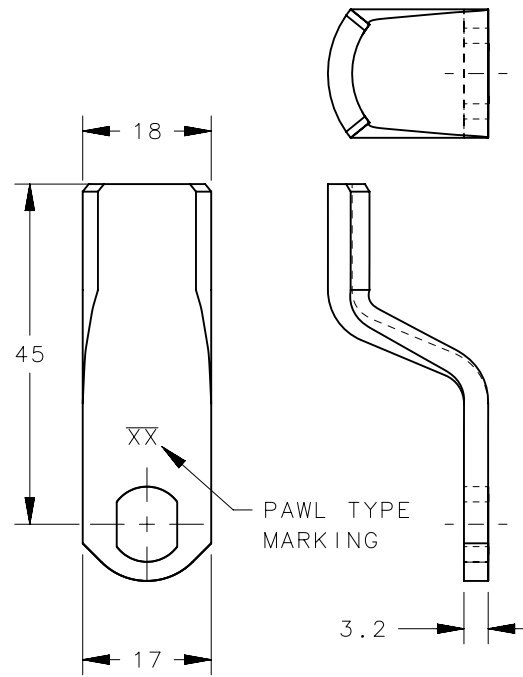


- NOTES:
- OPERATION: 195° TURN OF DRIVER OR KEY CAUSES PAWL TO ROTATE THEN PULL UP AS SHOWN.
 - DETERMINE TOTAL GRIP BY ADDING MAX. OUTER DOOR THICKNESS (INCLUDE ALL ACCESSORIES) PLUS COMPRESSED GASKETS AND FRAME THICKNESS.
 - FIND YOUR TOTAL GRIP IN PAWL TABLE TO DETERMINE THE CORRECT PAWL TYPE.
 - INSTALLATION:
 - INSERT LATCH INTO THE HOLE OF THE DOOR IN THE UNLATCHED POSITION. CHECK FOR PROPER ORIENTATION AND OPERATION OF PAWL.
 - INSTALL LOCKWASHER AND MOUNTING NUT (27mm ACROSS FLATS) ONTO HOUSING. RECOMMENDED TIGHTENING TORQUE FOR MOUNTING NUT IS 20Nm AND THE MOUNTING SCREW IS 10Nm.
 - THIS STYLE CANNOT ACCOMMODATE MULTI-POINT LATCHING.
 - FOR GRIP LENGTHS LESS THAN 15mm, SEE DWG. J-E3-10-1
 - FOR SEALED APPLICATIONS USE GASKET E5-17 (ORDERED SEPARATELY)
 - SEE SHEET 2 FOR DRIVER AND HEAD STYLES



REVISION HISTORY					
REV	DATE	BY	DESCRIPTION		
X	26SEP2024	SAK/DMS	PRN: P2024-1645		

TOTAL GRIP	MAX. OUTER DOOR THICKNESS (LATCH SHIPPED ASSEMBLED)	PAWL TYPE (XX)	TOTAL GRIP	MAX. OUTER DOOR THICKNESS (LATCH SHIPPED ASSEMBLED)	PAWL TYPE (XX)
15	MUST USE UNASSEMBLED LATCH	00	35	7	10
17	MUST USE UNASSEMBLED LATCH	01	37	7	11
19	1	02	39	7	12
21	2	03	41	7	13
23	4	04	43	7	14
25	5	05	45	7	15
27	6	06	47	7	16
29	7	07	49	7	17
31	7	08	51	7	18
33	7	09	53	7	19

MOUNTING STYLE - VV

- 10 - LATCH SHIPPED ASSEMBLED, TYPE A (TURN CLOCKWISE TO LATCH)
- 12 - LATCH SHIPPED UNASSEMBLED, TYPE A (TURN CLOCKWISE TO LATCH)
- 27 - LATCH SHIPPED ASSEMBLED, TYPE B (TURN COUNTERCLOCKWISE TO LATCH)
- 29 - LATCH SHIPPED UNASSEMBLED, TYPE B (TURN COUNTERCLOCKWISE TO LATCH)

ASSEMBLY PART NUMBER SUBASSEMBLY PART NUMBER HARDWARE PACKAGE

E3- VV WW - XX Z
 MOUNTING STYLE DRIVER PAWL TYPE FINISH

E3- VV WW - 0 Z
 MOUNTING STYLE DRIVER FINISH

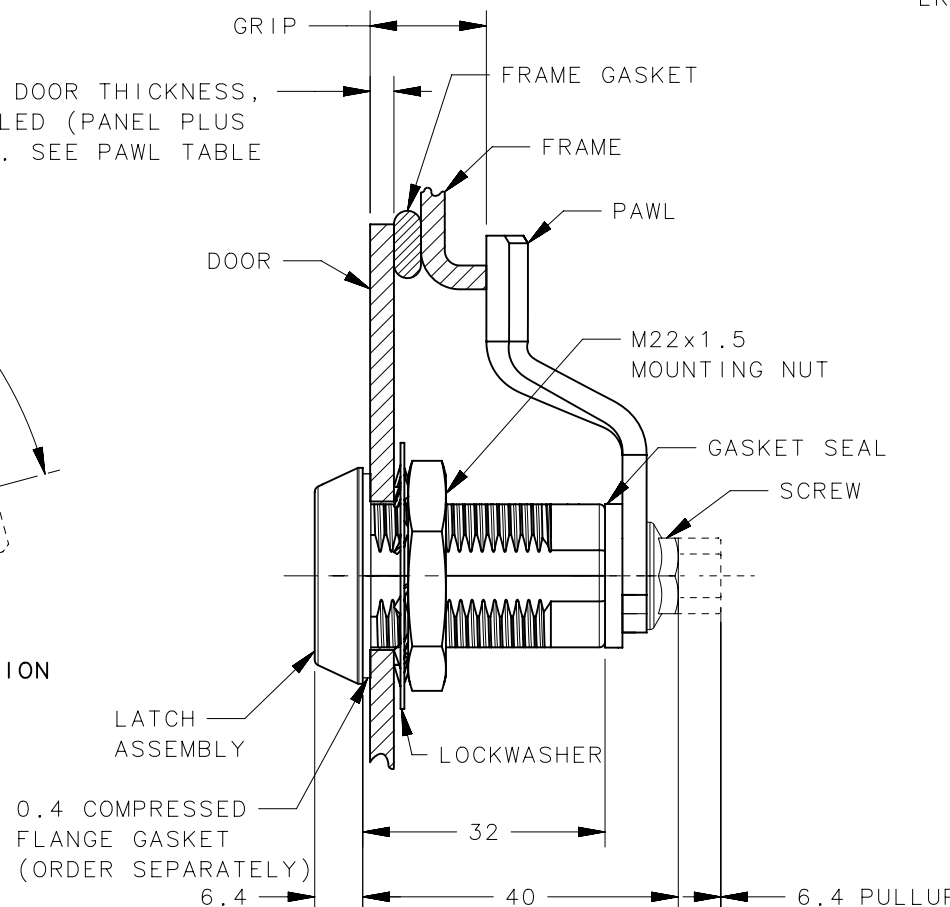
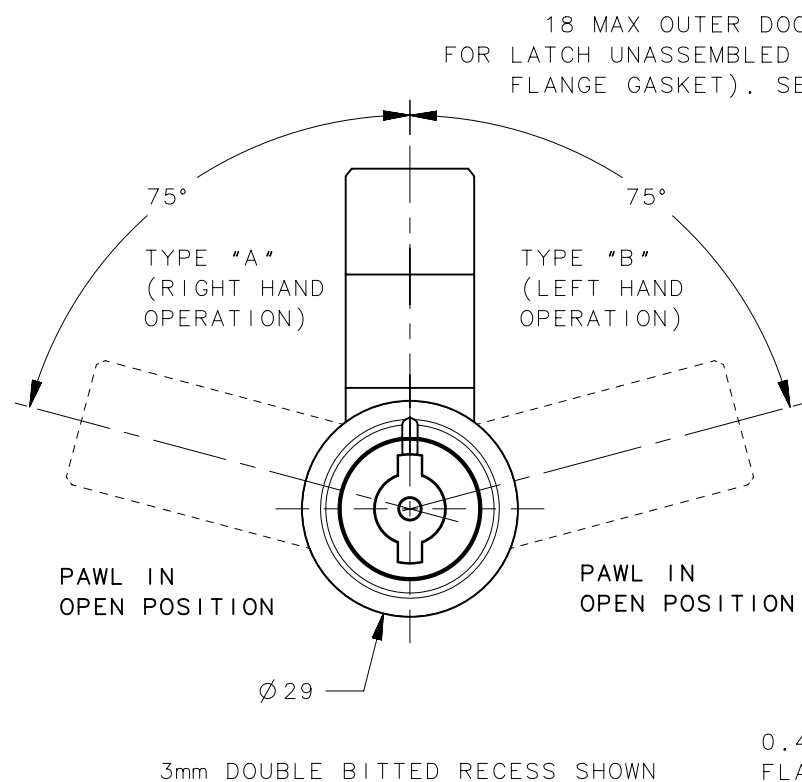
E3- VV 0 - XX- D
 MOUNTING STYLE PAWL TYPE HARDWARE TYPE

HARDWARE TYPE

- 7 - WHEN MOUNTING STYLE IS "SHIPPED ASSEMBLED" (VV=10 OR 27)
- 8 - WHEN MOUNTING STYLE IS "SHIPPED UNASSEMBLED" (VV=12 OR 29)
- 30- WHEN MOUNTING STYLE IS "SHIPPED UNASSEMBLED" WITH MTG. NUT, LK' WASHER, SCREW ONLY (VV= 12 OR 29)

FINISH TABLE - Z

- 1 - BRIGHT CHROME PLATE
- 5 - BLACK POWDER COAT
- 7 - SATIN SILVER POLYESTER POWDER COAT



TUBULAR KEY STYLE ONLY	BUSHING CAP	ALUMINUM	SEE FINISH TABLE
		303 STAINLESS STEEL	BLACK
GASKET SEAL		RUBBER	ACRYLIC LATEX SEALER
MOUNTING NUT		DIE CAST ZINC	ZINC PLATE CHROMATE, PLUS SEALER
LOCKWASHER		SPRING STEEL	ZINC PLATE BRIGHT CHROMATE
SCREW		LOW CARBON STEEL	ZINC PLATE CHROMATE, PLUS SEALER
PAWL		1010 STEEL	ZINC PLATE, CHROMATE DIP
PIN		1008 STEEL	ZINC PLATE CHROMATE, PLUS SEALER
SHAFT		LOW CARBON STEEL	ZINC IMMERSION COATING
CAM		1075 STEEL	ZINC IMMERSION COATING
SLEEVE		1075 STEEL	NATURAL
O-RING		BUNA-N	NATURAL
SPRING		302 STAINLESS STEEL	NATURAL
RETAINER		302 STAINLESS STEEL	NATURAL
CAP		DIE CAST ZINC	SEE FINISH TABLE
HOUSING		DIE CAST ZINC	SEE FINISH TABLE
TYPE OF COMPONENT		MATERIAL	FINISH

THIRD ANGLE PROJECTION

MILLIMETERS [IN]

TOLERANCES UNLESS OTHERWISE NOTED

ALL DIMENSIONS WITHOUT TOLERANCES ARE FOR REFERENCE ONLY.

PER ASME Y14.5M-2009

PROPRIETARY ITEM EXCEPT FOR USES EXPRESSLY GRANTED IN WRITING, INFORMATION DISCLOSED HEREON IS CONFIDENTIAL AND ALL RIGHTS, PATENT AND OTHERWISE, ARE RESERVED BY SOUTHCO, INC.

southco
CONNECT • CREATE • INNOVATE

DESCRIPTION: VISE-ACTION™ LATCH-INTERNATIONAL SERIES FIXED GRIP

SIZE: B SYSTEM: NX DWG NO.: J-E3-10

DRAWN BY: JSS/JGK DATE: 22SEP1998 SCALE: 1:1 SHEET: 1 OF 2

6

5

4

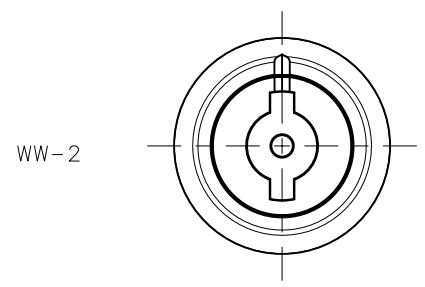
3

2

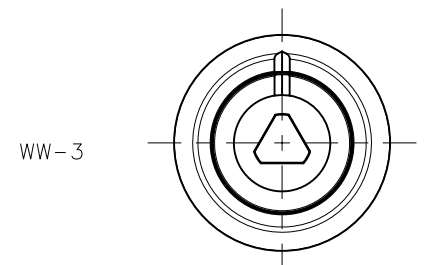
1

REVISION HISTORY			
REV	DATE	BY	DESCRIPTION
X	26SEP2024	SAK/DMS	PRN: P2024-1645

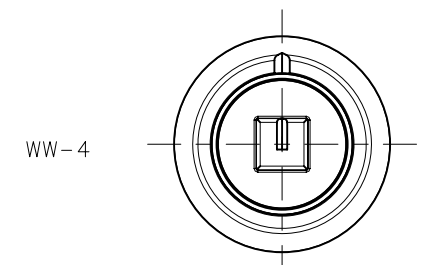
DRIVER



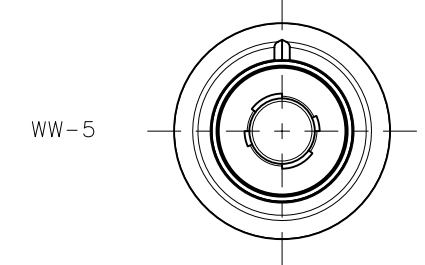
3mm DOUBLE BITTED



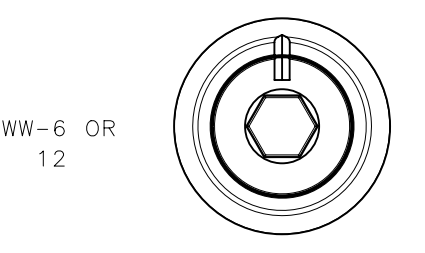
M4 TRIANGLE



7mm SQUARE

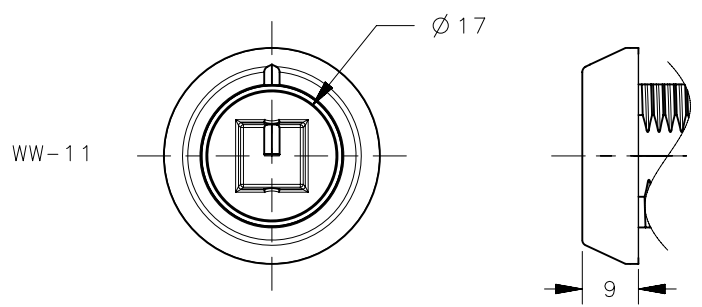


TUBULAR KEY

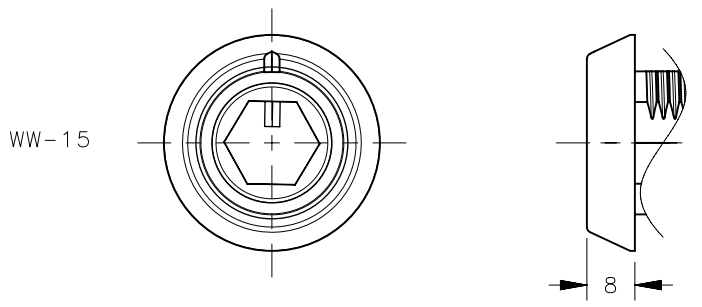


8mm HEX RECESS

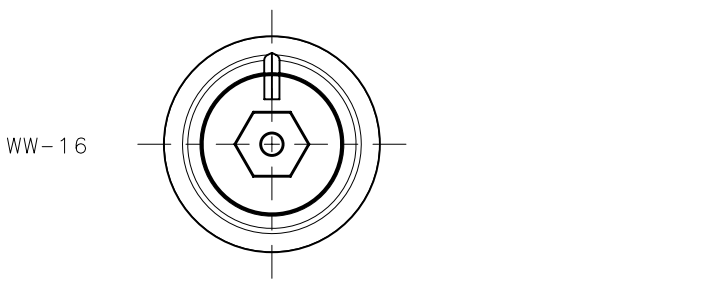
DRIVER



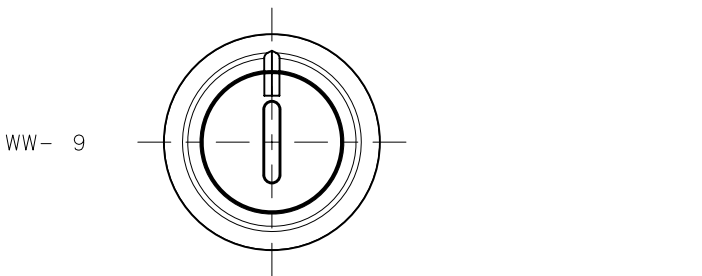
RAILWAY



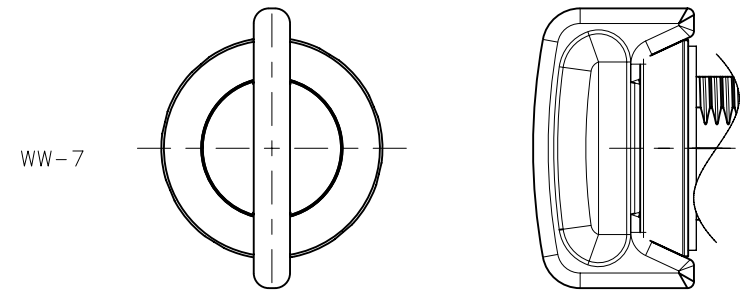
BELLCORE 216



BELLCORE ELECTRONICS

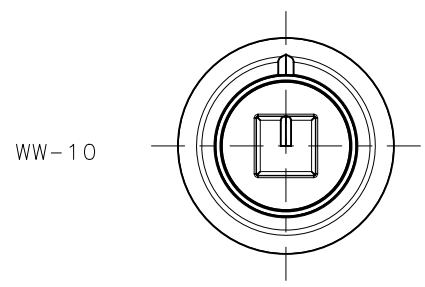


SLOTTED RECESS

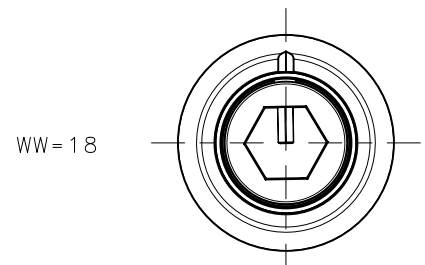


KNOB

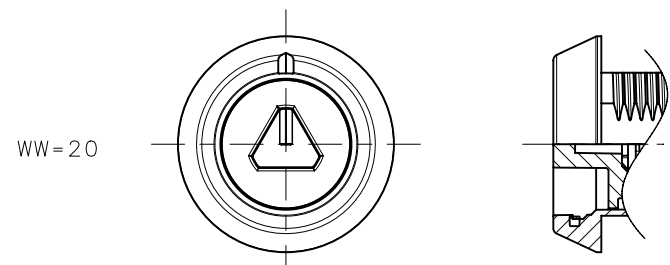
DRIVER



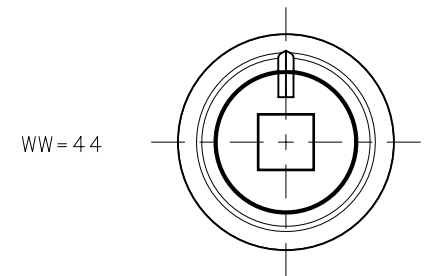
8mm SQUARE



10mm HEX

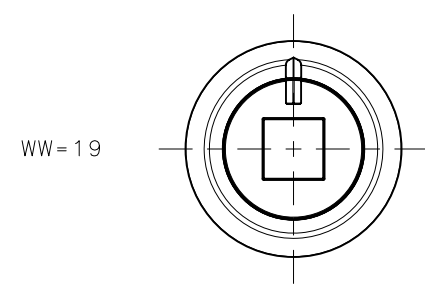


8mm TRIANGLE

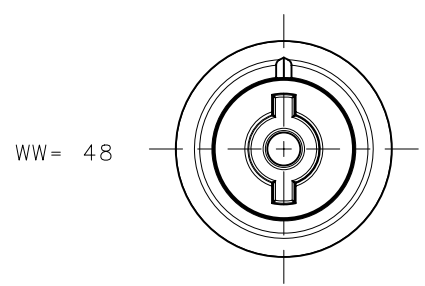


7.25mm SQUARE RECESS

DRIVER

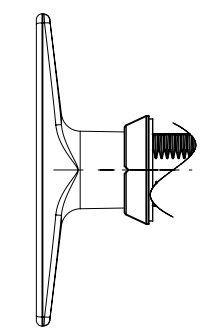


8mm SQUARE RECESS



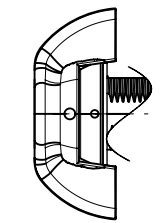
5mm DOUBLE BITTED

WW=1 - NONLOCKING
 WW=8 - LOCKING: CH-751



SCALE 1:2
T HANDLE

WW=50 - NONLOCKING
 WW=51 - LOCKING (CH751)
 WW=57 - LOCKING (14603)
 WW=58 - SHUTTERED, REVERSIBLE (RK001)
 WW=59 - WITHOUT LOCK PLUG (NOTE F)
 (CUSTOMER INSTALLED)



SCALE 1:2
WING KNOB

(SEE DRAWINGS J-E3-10-4 AND J-E3-11-2 FOR DETAILS.)

THIRD ANGLE PROJECTION				 CONNECT · CREATE · INNOVATE	
MILLIMETERS [IN]					
TOLERANCES UNLESS OTHERWISE NOTED		DESCRIPTION WISE-ACTION™ LATCH-INTERNATIONAL SERIES FIXED GRIP			
ALL DIMENSIONS WITHOUT TOLERANCES ARE FOR REFERENCE ONLY.		SIZE B	SYSTEM NX	DWG NO. J-E3-10	
PER ASME Y14.5M-2009		DRAWN BY JSS/JGK	DATE 22SEP1998	SCALE 1:1	SHEET 2 OF 2
<small>PROPRIETARY ITEM EXCEPT FOR USES EXPRESSLY GRANTED IN WRITING, INFORMATION DISCLOSED HEREON IS CONFIDENTIAL AND ALL RIGHTS, PATENT AND OTHERWISE, ARE RESERVED BY SOUTHCO, INC.</small>					

6

5

4

3

2

1