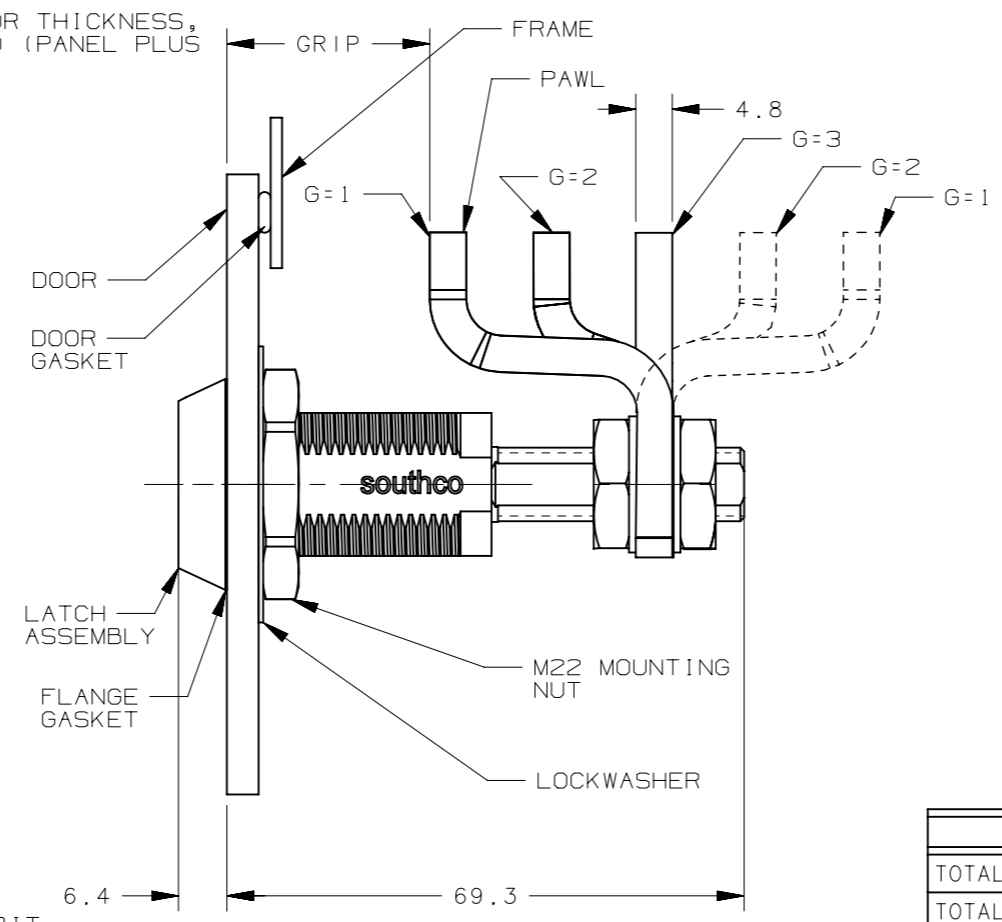
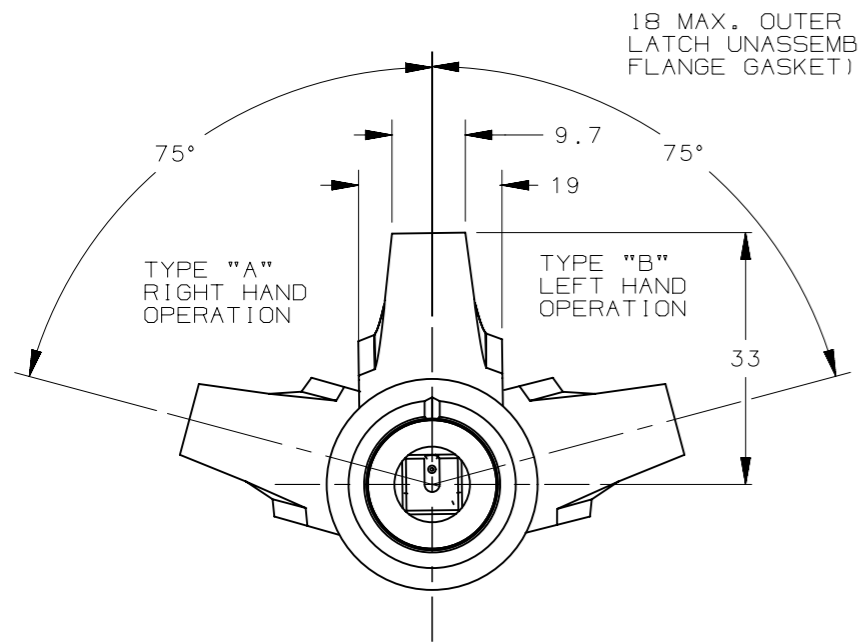
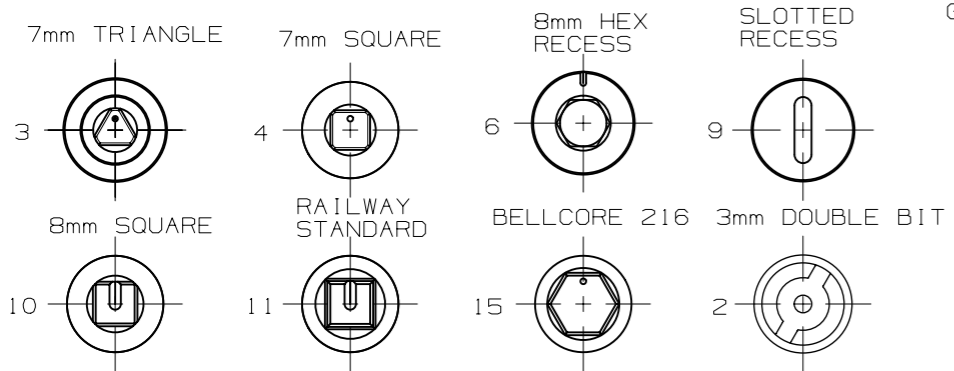


REVISION HISTORY			
REV	DATE	BY	DESCRIPTION
D	23JAN2018	ANT/CMS	PRN: P2018-0215



NOTES

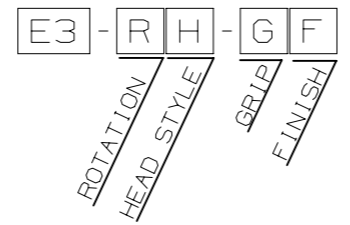
- OPERATION: 195° TURN OF DRIVER CAUSES PAWL TO ROTATE AND PULL UP AS SHOWN.
- DETERMINE TOTAL GRIP BY ADDING: MAX. OUTER DOOR THICKNESS (INCLUDE ALL ACCESSORIES) PLUS COMPRESSED FRAME GASKET AND FRAME THICKNESS.
- INSTALLATION:
 - INSERT LATCH INTO HOLE IN DOOR. CHECK FOR PROPER ORIENTATION AND OPERATION USING PAWL.
 - INSTALL USING LOCKWASHER AND MOUNTING NUT (M22 ACROSS FLATS). TIGHTENING TORQUE IS 20 Nm.
 - INSTALL JAM NUT, LOCKWASHER, PAWL, LOCKWASHER AND JAM NUT ON SHAFT. ADJUST JAM NUTS TO POSITION PAWL AT CORRECT GRIP (WITH LATCH CLOSED). TIGHTEN JAM NUTS (20 Nm MAX TORQUE) USING TWO 17mm WRENCHES.
- CAUTION: ADJUST PAWL SO NO MORE THAN 7.9Nm TORQUE IS REQUIRED TO CLOSE LATCH.



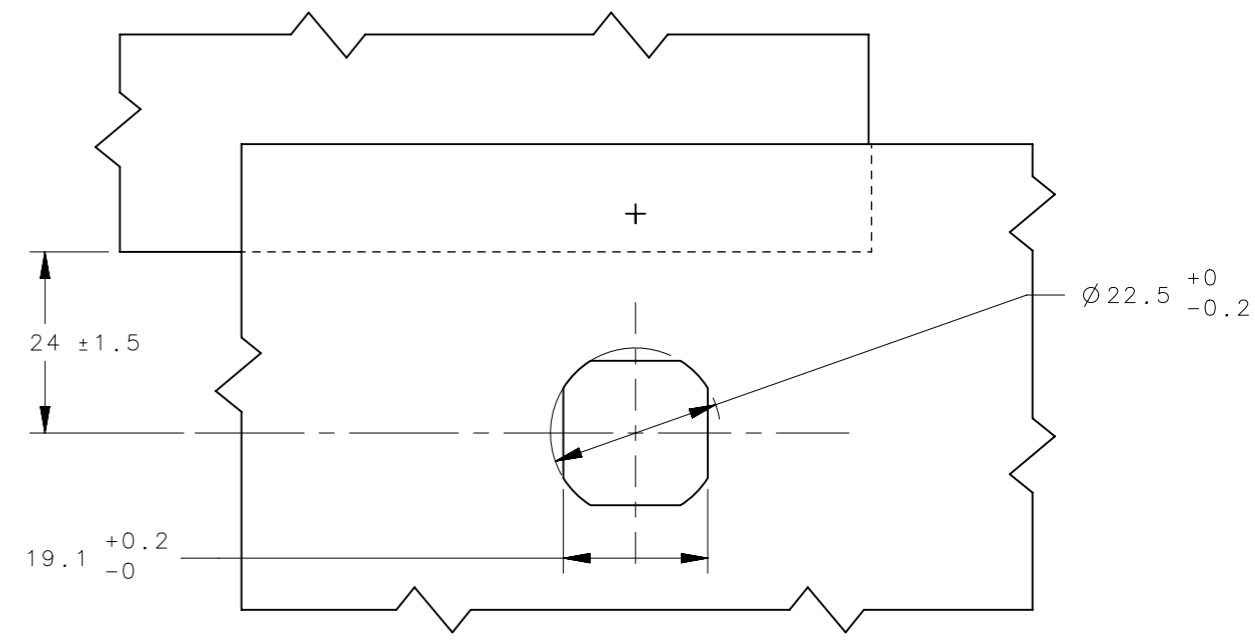
GRIP TABLE			
TOTAL GRIP RANGE (FORWARD PAWL)	16.4-32.2	30.4-46.1	43.9-59.6
TOTAL GRIP RANGE (REVERSE PAWL)	71.3-81.2	57.6-73.3	
MAX OUTER DOOR THICKNESS	18	18	18
GRIP STYLE (G)	1 (DEEP OFFSET PAWL)	2 (OFFSET PAWL)	3 (STRAIGHT PAWL)

DRIVER STYLE	KEY PART NUMBER
3mm DOUBLE BIT	E3-2-1
7mm TRIANGLE	E3-3-1
7mm SQUARE	E3-4-1
8mm HEX RECESS	NOT SUPPLIED BY SOUTHCO
SLOTTED RECESS	NOT SUPPLIED BY SOUTHCO
8mm SQUARE	E3-8-1
RAILWAY STANDARD	E3-14-1
BELLCORE 216	E3-12-1

STANDARD PART NUMBER



- R = ACTUATION STYLE
- 1 = LATCH SHIPPED UNASSEMBLED, TYPE A (TURN CAP CLOCKWISE TO LATCH)
 - 22 = LATCH SHIPPED UNASSEMBLED, TYPE B (TURN CAP COUNTER-CLOCKWISE TO LATCH)
- G = GRIP
- 1 = DEEP OFFSET PAWL (27.4 OFFSET)
 - 2 = OFFSET PAWL (13.7 OFFSET)
 - 3 = STRAIGHT PAWL (NO OFFSET)
- F = COLOR AND FINISH
- 59 = BLACK HARD ANODIZE
 - 06 = CLEAR POWDER COAT
 - 56 = BLACK POWDER COAT
 - 76 = SILVER POWDER COAT



COMPONENT	MATERIAL	FINISH
HOUSING	ALUMINUM	ANODIZED OR PC
CAP	ALUMINUM	ANODIZED OR PC
BUSHING	ALUMINUM	ANODIZED OR PC
RETAINER	STAINLESS STEEL	NATURAL
SPRING	STAINLESS STEEL	NATURAL
O-RING	BUNA-N	NA
SLEEVE	STAINLESS STEEL	PASSIVATED
CAM	ALLOY STEEL	ZINC IMMERSION COATING
SHAFT (ANODIZED)	STAINLESS STEEL	PASSIVATED
SHAFT (PC VERSION)	STEEL	ZINC PLATE
PIN	STEEL	ZINC PLATE
PAWL (ANODIZED VERSION)	STAINLESS STEEL	PASSIVATED
PAWL (PC VERSION)	STEEL	ZINC PLATE
SCREW (ANODIZED VERSION)	STAINLESS STEEL	PASSIVATED
SCREW (PC VERSION)	STEEL	ZINC PLATE
LOCKWASHER (ANODIZED VERSION)	STAINLESS STEEL	PASSIVATED
LOCKWASHER (PC VERSION)	SPRING STEEL	ZINC PLATE
MOUNTING NUT (ANODIZED VERSION)	POWDERED METAL (STAINLESS STEEL)	NATURAL
MOUNTING NUT (PC VERSION)	ZINC ALLOY	CHROMATE
GASKET SEAL	NEOPRENE	NA
SEAL	NITRILE RUBBER	NA

THIRD ANGLE PROJECTION	MILLIMETERS [IN]		DESCRIPTION COMPRESSION LATCH ALUMINUM E3 ADJUSTABLE GRIP			
					TOLERANCES UNLESS OTHERWISE NOTED	SIZE SYSTEM A3 NX
ALL DIMENSIONS WITHOUT TOLERANCES ARE FOR REFERENCE ONLY.		PER ASME Y14.5M-1994	DWG NO. J-E3-12-13	DATE 07AUG2015	SCALE 1:1	SHEET 1 OF 1

PROPRIETARY ITEM
EXCEPT FOR USES EXPRESSLY GRANTED IN WRITING, INFORMATION DISCLOSED HEREON IS CONFIDENTIAL AND ALL RIGHTS, PATENT AND OTHERWISE, ARE RESERVED BY SOUTHCO, INC.