

REVISION HISTORY			
REV	DATE	BY	DESCRIPTION
F	06OCT2022	GEA/NJF	PRN: P2022-1773

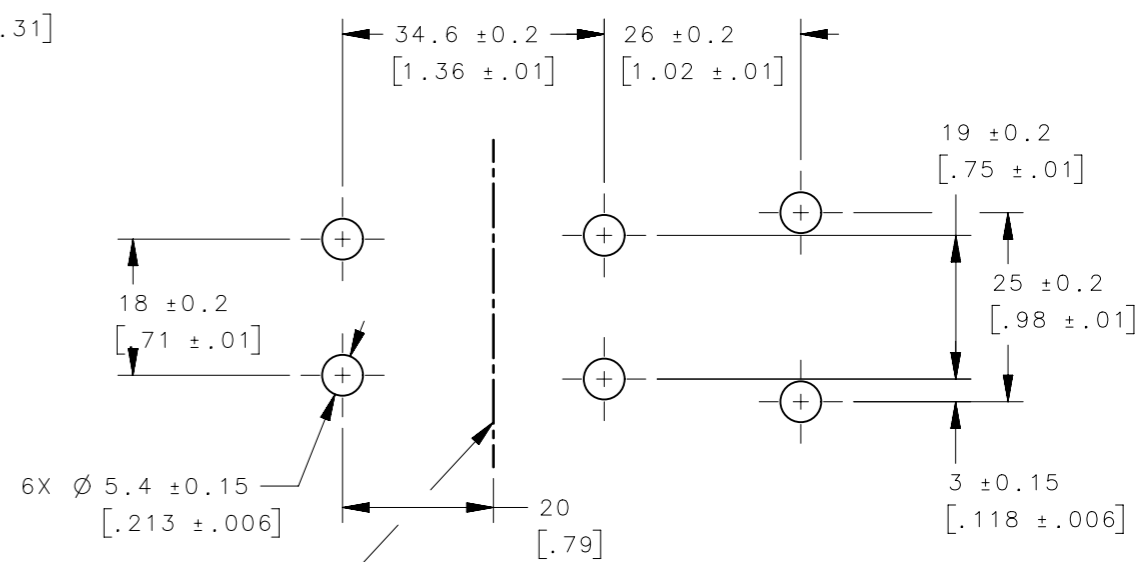
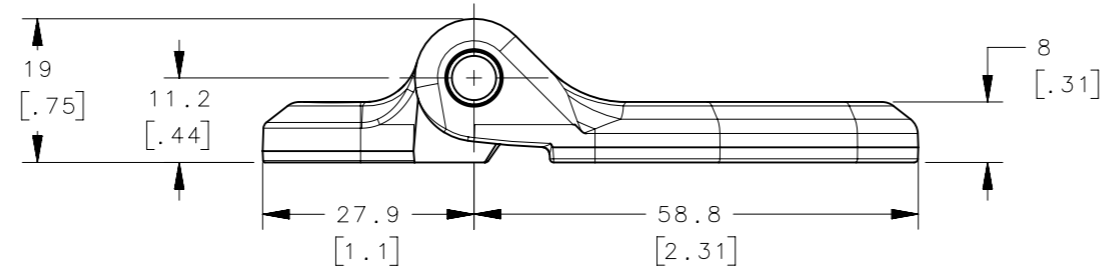
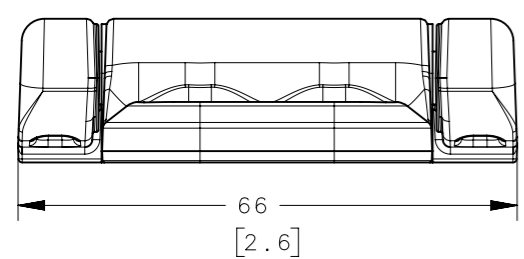
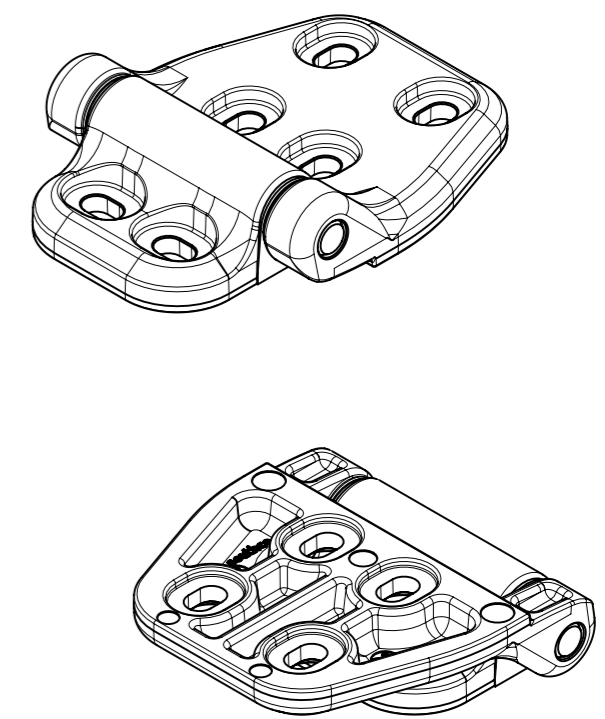
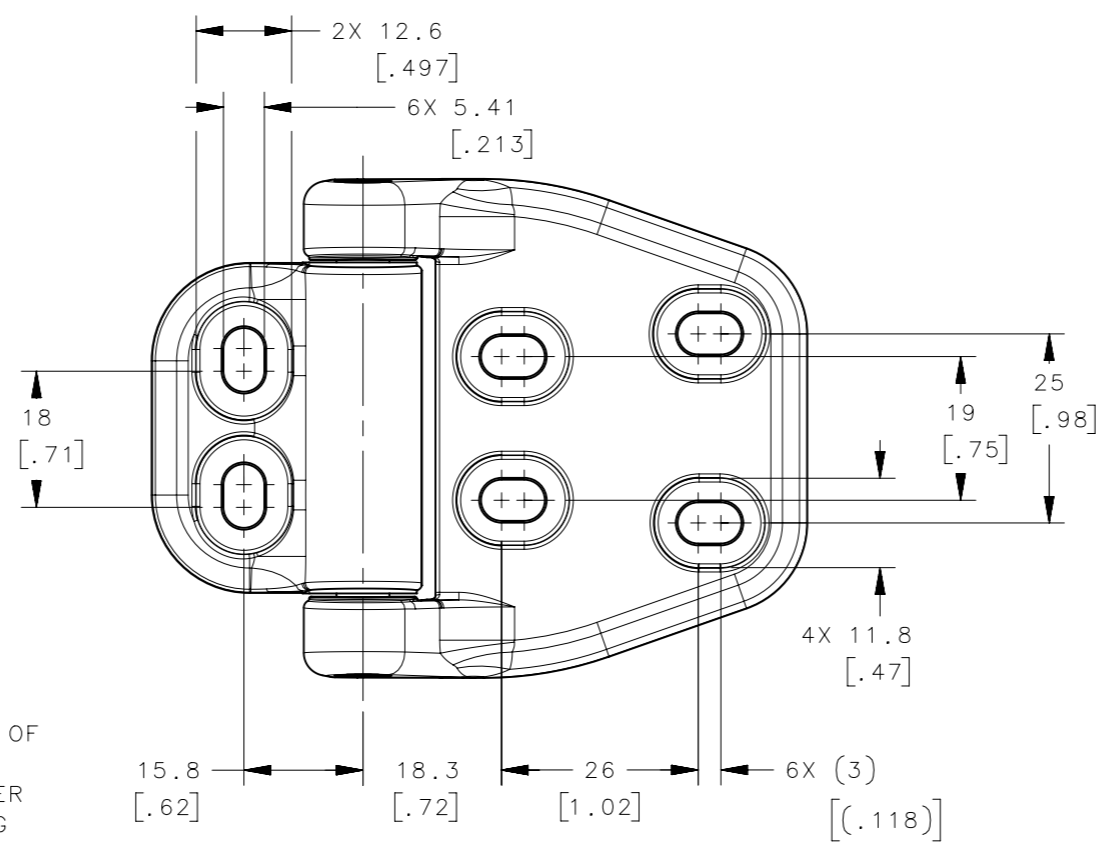
NOTES:

A. COSMETIC SPECIFICATION:
ALL EXTERNAL VISIBLE SURFACES WHEN FASTENED TO A PANEL CONFORM TO "CLASS C" DESIGNATION FOR POWDER COATING, ALL OTHER VISIBLE AND RECESS SURFACES ARE "CLASS D", PER SOUTHCO COSMETIC SPECIFICATION S-121, LATEST REVISION FOR POWDER COATING.

B. MATERIALS:
PART NUMBER: EH-8C-6W8-82 (MATTE BLACK POWDER COATED)
FIXED AND MOVABLE HINGE LEAF;
DIE CAST ALUMINUM, CHROMATE COATED, MATTE BLACK COLOR POWDER COATED
HINGE PIN; STAINLESS STEEL, PASSIVATED
LUBRICANT: SILICONE BASE GREASE

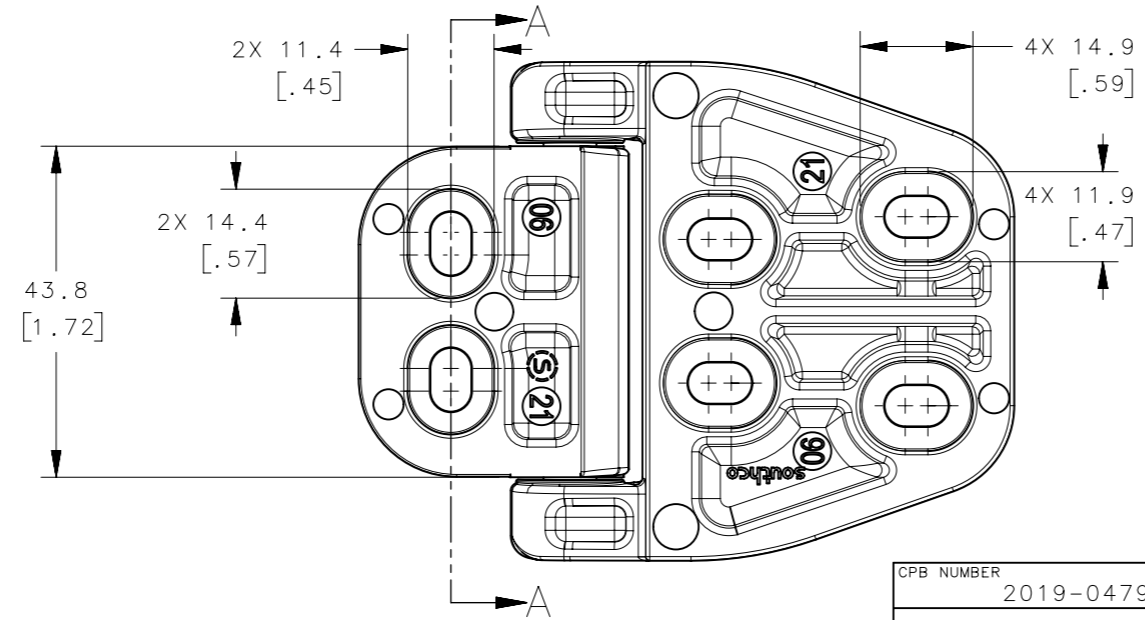
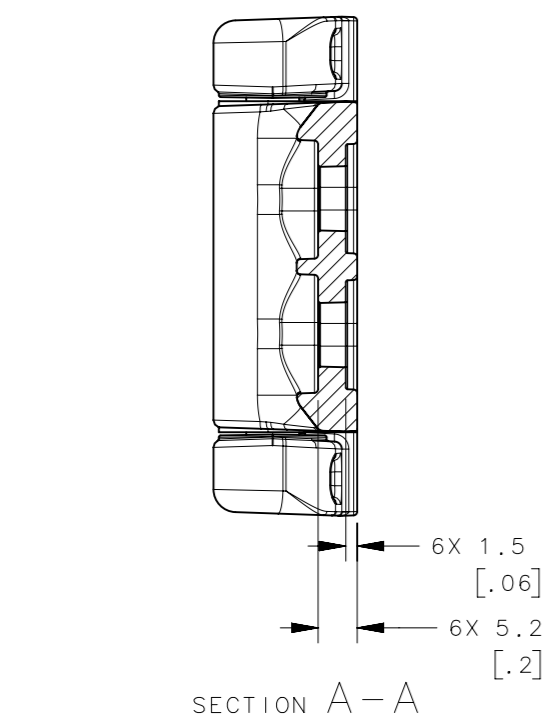
C. RECOMMENDED MOUNTING HARDWARE (CUSTOMER SUPPLIED):
M5X0.8 OR #10 PAN HEAD SCREWS
BOTTOM OF HINGE IS COUNTERBORED FOR USE OF MOST M5 OR #10 RIVET STYLE (SELF CLINCHING) THREADED PANEL FASTENERS.

USE MOUNTING SCREW WITH MINIMUM TENSILE STRESS OF 517 MPa CLASS 5.8 (75 KSI GRADE 2) TO MEET LOADING OF HINGE IN APPLICATION. MAXIMUM TIGHTENING TORQUE: 2.27 N*m (20.2 lbf*in) DRY CONDITION. HIGHER TENSILE STRENGTH SCREWS CAN BE USED WITH TIGHTENING TORQUES NOT TO EXCEED 4 N*m (35 lbf*in).



PANEL PREPARATION

SOUTHCO PART NUMBER: EH-8C-6W8-82



CPB NUMBER 2019-0479	THIRD ANGLE PROJECTION				
MASS 0.12 Kg./ Hinge	MILLIMETERS [IN]				
PROPRIETARY ITEM	TOLERANCES UNLESS OTHERWISE NOTED		DESCRIPTION HINGE ASSEMBLY M6 PAN HEAD SCREWS		
EXCEPT FOR USES EXPRESSLY GRANTED IN WRITING, INFORMATION DISCLOSED HEREON IS CONFIDENTIAL AND ALL RIGHTS, PATENT AND OTHERWISE, ARE RESERVED BY SOUTHCO, INC.	ALL DIMENSIONS WITHOUT TOLERANCES ARE FOR REFERENCE ONLY.		SIZE A3	SYSTEM NX	DWG NO. J-EH-8C-6W8
	PER ASME Y14.5M-1994	DRAWN BY GEA	DATE 21AUG2019	SCALE 1:1	SHEET 1 OF 1