

southco[®]

PROPRIETARY ITEM - EXCEPT FOR USES EXPRESSLY GRANTED IN WRITING INFORMATION DISCLOSED HEREON IS CONFIDENTIAL AND ALL RIGHTS PATENT AND OTHERWISE ARE RESERVED BY SOUTHCO, INC.

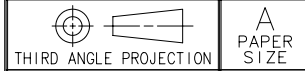
F6 DUAL LATCHING RELEASE HINGE

DATE	DRAWN	CHKD	SCALE	DRAWING NUMBER
23FEB2005	MJS	JF	.75:1	J-F6-22

REV	DATE	DRAWN/CHKD	DESCRIPTION	PART NUMBER	MATERIAL & FINISH
A	26MAY2005	CMW/AJH	PRN: P2005-0651	F6-22-N1-3W1	SEE NOTE A
				F6-22-S1-3W1	

INCHES

ALL DIMENSIONS WITHOUT TOLERANCES ARE FOR REFERENCE ONLY.



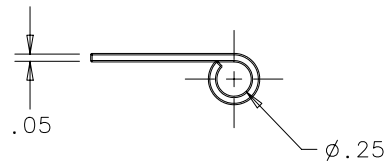
NOTES:

A. MATERIAL AND FINISH:

PART NUMBER F6-22-N1-3W1:
DOOR AND FRAME LEAFS - 1008-1010 STEEL
ZINC PLATE, BRIGHT CHROMATE
HANDLE AND PINS - 12L14 STEEL, ZINC PLATE, BRIGHT CHROMATE
SPRING - 302 STAINLESS STEEL, PASSIVATED

PART NUMBER F6-22-S1-3W1:
DOOR AND FRAME LEAFS - 304 STAINLESS STEEL, PASSIVATED
HANDLE AND PINS - 303 STAINLESS STEEL, PASSIVATED
SPRING - 302 STAINLESS STEEL, PASSIVATED

FRAME LEAF



DOOR LEAF

