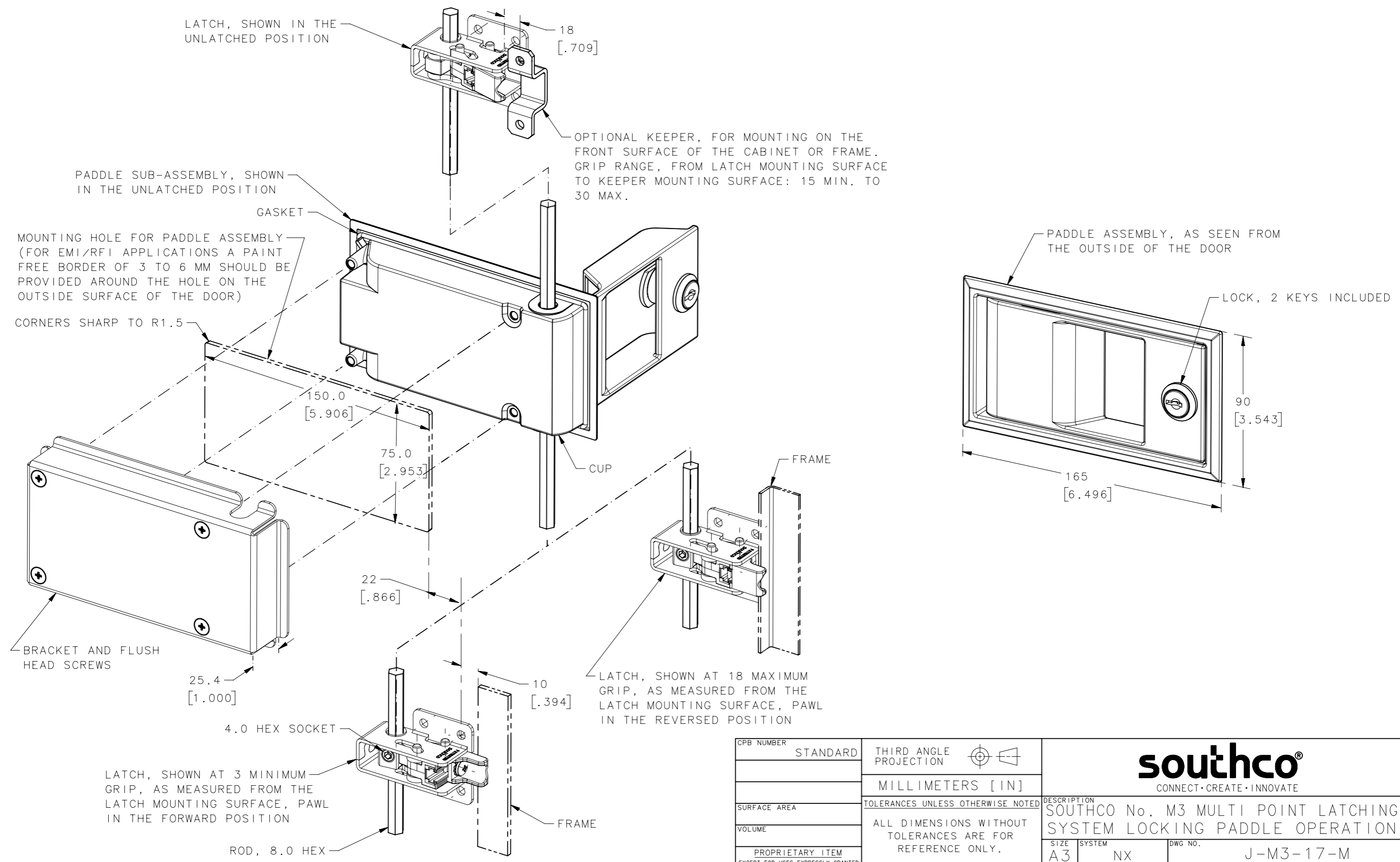


REVISION HISTORY			
REV	DATE	BY	DESCRIPTION
E	28APR2021	MBT/DMS	PRN: P2021-0750



CPB NUMBER	STANDARD	THIRD ANGLE PROJECTION			<b>southco</b> <sup>®</sup> CONNECT • CREATE • INNOVATE
		MILLIMETERS [IN]			
SURFACE AREA	TOLERANCES UNLESS OTHERWISE NOTED		DESCRIPTION		
VOLUME	ALL DIMENSIONS WITHOUT TOLERANCES ARE FOR REFERENCE ONLY.		SOUTHCO No. M3 MULTI POINT LATCHING SYSTEM LOCKING PADDLE OPERATION		
PROPRIETARY ITEM	SIZE	SYSTEM	DWG NO.	J-M3-17-M	
EXCEPT FOR USES EXPRESSLY GRANTED IN WRITING, INFORMATION DISCLOSED HEREON IS CONFIDENTIAL AND ALL RIGHTS, PATENT AND OTHERWISE, ARE RESERVED BY SOUTHCO, INC.	A3	NX		SCALE	1:2
	PER ASME Y14.5M-1994	DRAWN BY	RHB	DATE	05APR1990
				SHEET	1 OF 2

REVISION HISTORY			
REV	DATE	BY	DESCRIPTION
E	28APR2021	MBT/DMS	PRN: P2021-0750

PART NUMBERS:

PADDLE ASSEMBLY, INCLUDING BRACKET AND SCREWS: M3-17  
 DUST AND MOISTURE GASKET: M3-12  
 EMI/RFI GASKET: M3-13  
 ROD: M3-XXX, WHERE XXX IS THE TOTAL LENGTH IN CENTIMETERS.  
 MINIMUM ROD LENGTH = CENTER-TO-CENTER DISTANCE BETWEEN THE FURTHEST LATCHES PLUS .8 INCH (2 CM).  
 NOTE: RODS ARE MANUFACTURED TO SPECIAL SPECIFICATIONS. RODS NOT SUPPLIED BY SOUTHCO SHOULD BE STAINLESS STEEL OR STEEL AND SHOULD HAVE NO MORE THAN 1° TWIST IN ANY 3 FOOT LENGTH.

SPECIFICATIONS :

25mm INWARD CLEARANCE REQUIRED FOR BOTH THE PADDLE ASSEMBLY AND THE LATCH. (31mm WHEN LATCH IS ADJUSTED TO MAXIMUM GRIP).

MAXIMUM DOOR THICKNESS IS 6.2mm. DOOR THICKNESS AFFECTS THE LOCATION OF THE LATCH ASSEMBLY NEAREST THE PADDLE ACTUATOR. AT MAXIMUM DOOR THICKNESS, DISTANCE FROM THE PADDLE TO THE NEAREST LATCH MUST BE AT LEAST 20 CM. AT NOMINAL DOOR THICKNESS OF 3.7mm. THE LATCH MAY BE ADJACENT THE PADDLE ASSEMBLY.

THE LATCH HAS AN OVER-CENTER TOGGLE ACTION WITH APPROXIMATELY 5.1mm OF PAWL PULL-UP TO THE FULLY LATCHED POSITION. (DURING LATCHING, THE PAWL PULLS UP 6.4mm AND DROPS BACK 1.3mm)

PULL-UP FORCE PER LATCH SHOULD NOT EXCEED 445 NEWTONS. TO DETERMINE THE MINIMUM NUMBER OF LATCHES WHICH MUST BE USED, DIVIDE THE TOTAL REQUIRED PULL-UP FORCE IN NEWTONS BY 445.

INSTALLATION INSTRUCTIONS:

ATTACH THE LATCHES AND PADDLE ASSEMBLY TO THE DOOR. WITH THE LATCHES AND THE PADDLE IN THE LATCHED POSITION, SLIDE THE ROD THROUGH ALL OF THE ASSEMBLIES. (BECAUSE OF THE RETURN BEND ON THE DOOR, IT MAY BE NECESSARY TO ATTACH ONE OR MORE LATCHES AFTER THE ROD IS INSTALLED.) TIGHTEN THE SETSCREWS IN THE LATCHES TO 4.5 TO 6.8 NEWTON-METERS TORQUE. RAISE THE PADDLE AND TIGHTEN THE SETSCREWS ON ITS UNDERSIDE TO 4.5 TO 6.8 NEWTON-METERS TORQUE. ADJUST THE LATCHES FOR THE PROPER GRIP (PAWL ADJUSTS TO 0.8mm INCREMENTS) AND TIGHTEN THE PAWL SCREWS SECURELY.

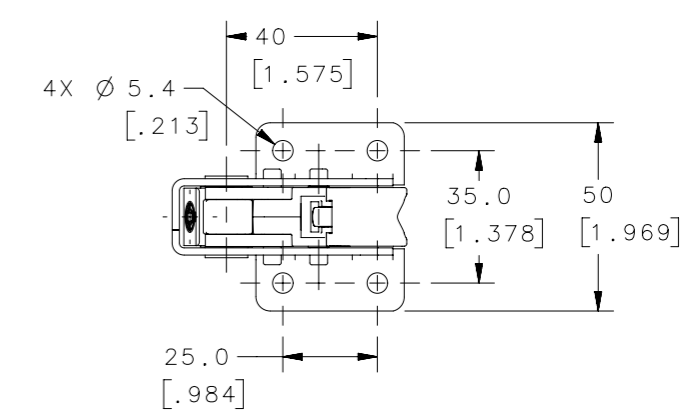
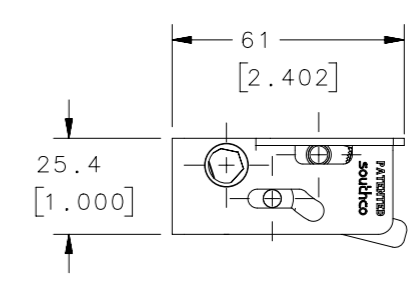
MATERIAL AND FINISH:

THE PADDLE ASSEMBLY CONSISTS OF PADDLE AND CUP, DIE CAST ZINC, BLACK POWDER COATED; BRACKET, 1008/1010 STEEL, ZINC PLATED, YELLOW; BUSHINGS AND SCREWS, STEEL, ZINC PLATED, YELLOW; SETSCREW, STEEL, ZINC PLATED, YELLOW, WITH NYLON PATCH; O-RINGS, BUNA N, NATURAL; LOCK, DIE CAST ZINC, BLACK POWDER COATED WITH BRASS TUMBLERS; AND KEYS, BRASS, NATURAL.  
 THE DUST AND MOISTURE GASKET IS BUNA N, NATURAL.  
 THE EMI/RFI GASKET IS KNITTED SN/CU/FE MESH.  
 THE LATCH CONSISTS OF CRANK, PAWL SUPPORTS AND PAWL, DIE CAST ZINC, CHEMICAL PROTECTIVE FILM; HOUSING AND LINKS, 1008/1010 STEEL, ZINC PLATED, BRIGHT; BUSHINGS, STEEL, ZINC PLATED, BRIGHT; LONG PIN: LOW CARBON STEEL, NICKEL PLATED; SHORT PIN: LOW CARBON STEEL, ZINC PLATED; SCREW, LOCKWASHER AND NUT, STEEL, ZINC PLATED, YELLOW; AND SETSCREW, STEEL, ZINC PLATED, YELLOW, WITH NYLON PATCH.

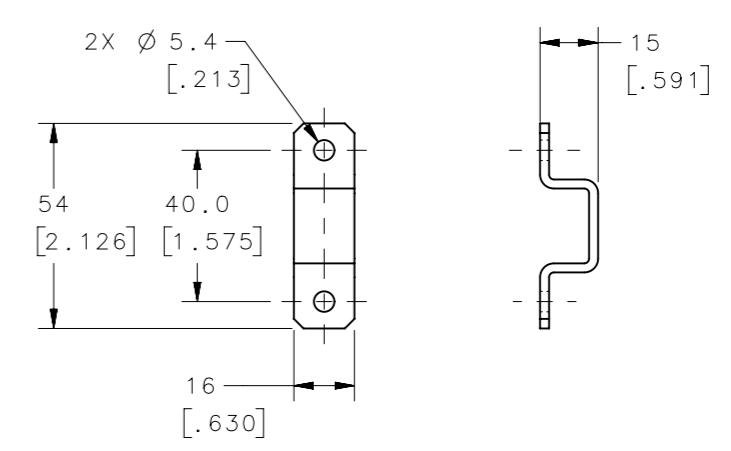
THE KEEPER IS 1008/1010 STEEL, ZINC PLATED, YELLOW.  
 THE ROD IS TYPE 303 STAINLESS STEEL, NATURAL.

TOLERANCES:

ZERO PLACE: ±1      ONCE PLACE: ±0.1



LATCH : M3-50



KEEPER : M3-51

CPB NUMBER	STANDARD	THIRD ANGLE PROJECTION		
		MILLIMETERS [IN]		
SURFACE AREA	TOLERANCES UNLESS OTHERWISE NOTED		DESCRIPTION	
VOLUME	ALL DIMENSIONS WITHOUT TOLERANCES ARE FOR REFERENCE ONLY.		SOUTHCO No. M3 MULTI POINT LATCHING SYSTEM LOCKING PADDLE OPERATION	
PROPRIETARY ITEM	SIZE	SYSTEM	DWG NO.	
EXCEPT FOR USES EXPRESSLY GRANTED IN WRITING, INFORMATION DISCLOSED HEREON IS CONFIDENTIAL AND ALL RIGHTS, PATENT AND OTHERWISE, ARE RESERVED BY SOUTHCO, INC.	A3	NX	J-M3-17-M	
	PER ASME Y14.5M-1994	DRAWN BY	DATE	SCALE
		RHB	05APR1990	1:1
				SHEET 2 OF 2