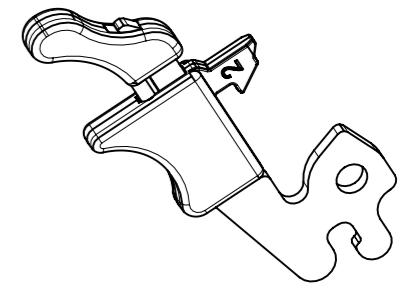
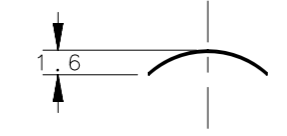
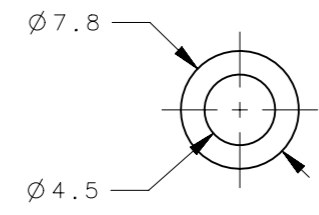
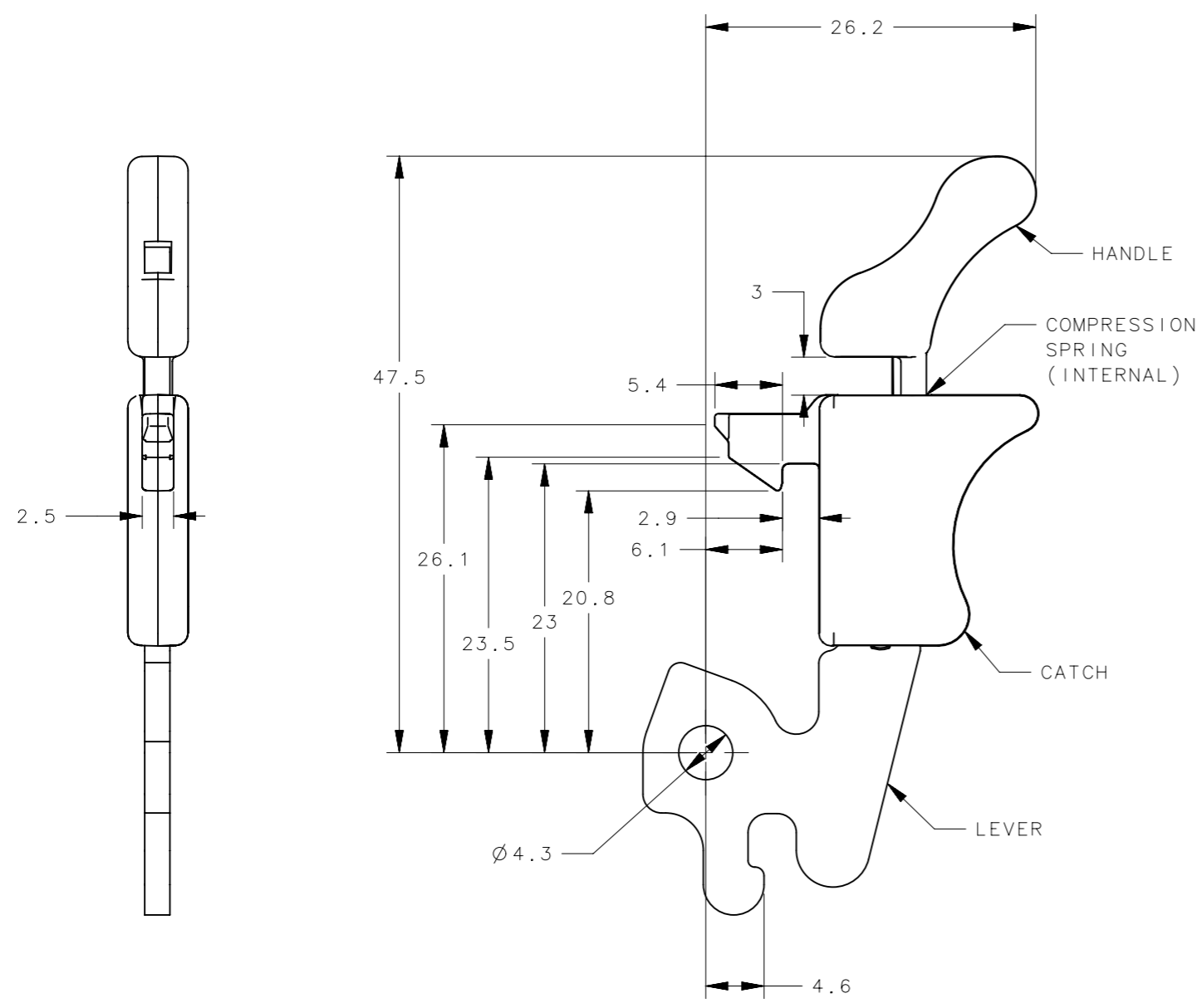


REVISION HISTORY			
REV	DATE	BY	DESCRIPTION
E	11OCT2016	DFB/CMS	PRN: P2016-2266



SCALE 1:1



U-BENT WASHER

NOTES:

A. MATERIAL AND FINISH:

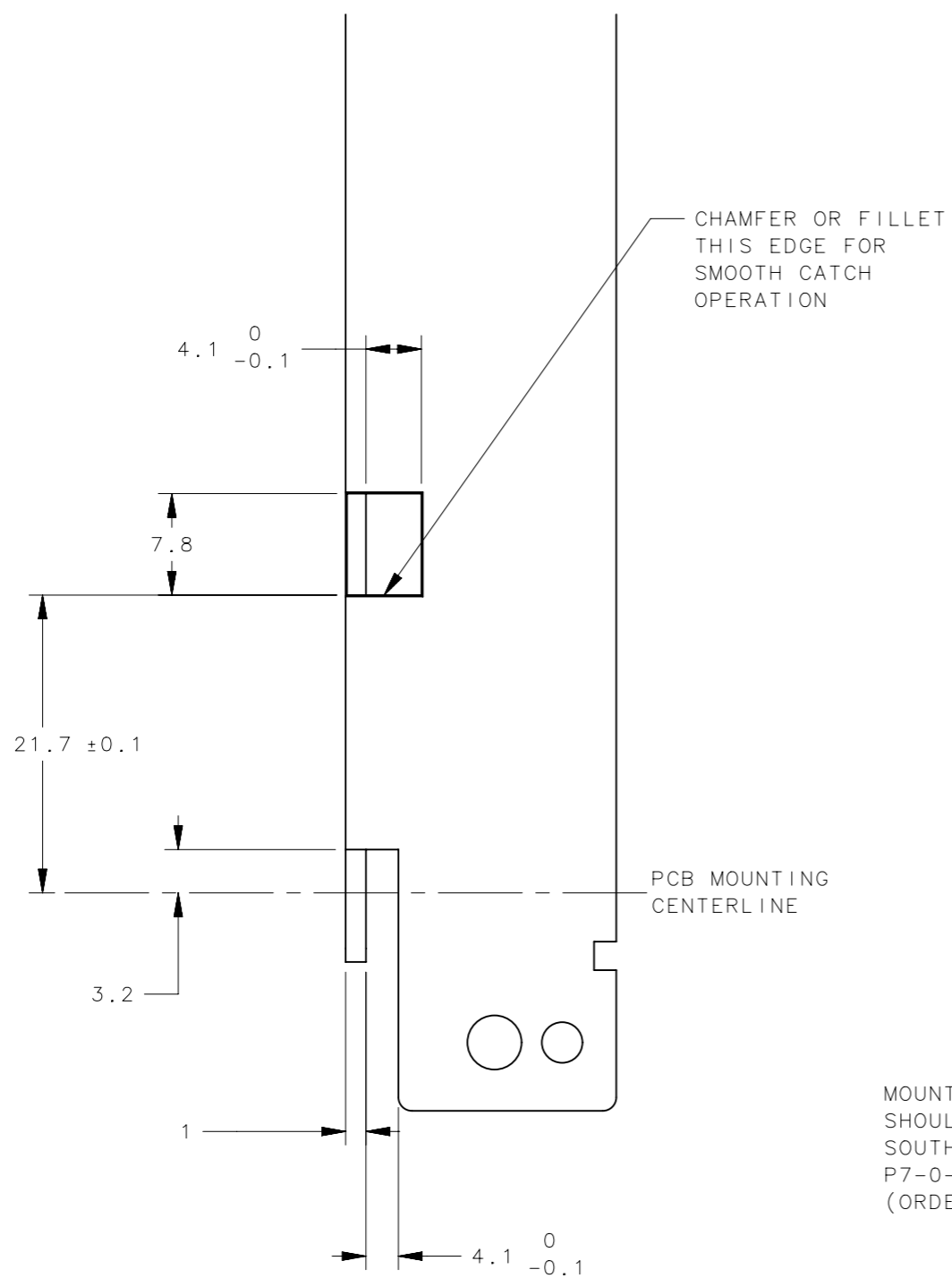
- LEVER: LOW CARBON STEEL, ZINC PLATE PLUS CHROMATE DIP.
- CATCH AND HANDLE: NYLON 6, 30% GLASS FILLED, UL 94 V0, BLACK, FOR PART P7-A-523-81 SEE NOTE C.
- COMPRESSION SPRING AND U-BENT WASHER: 300 SERIES STAINLESS STEEL, NATURAL.

B. PLATING TO MEET SOUTHCO COSMETIC SPECIFICATION S-121-02 CLASS C.

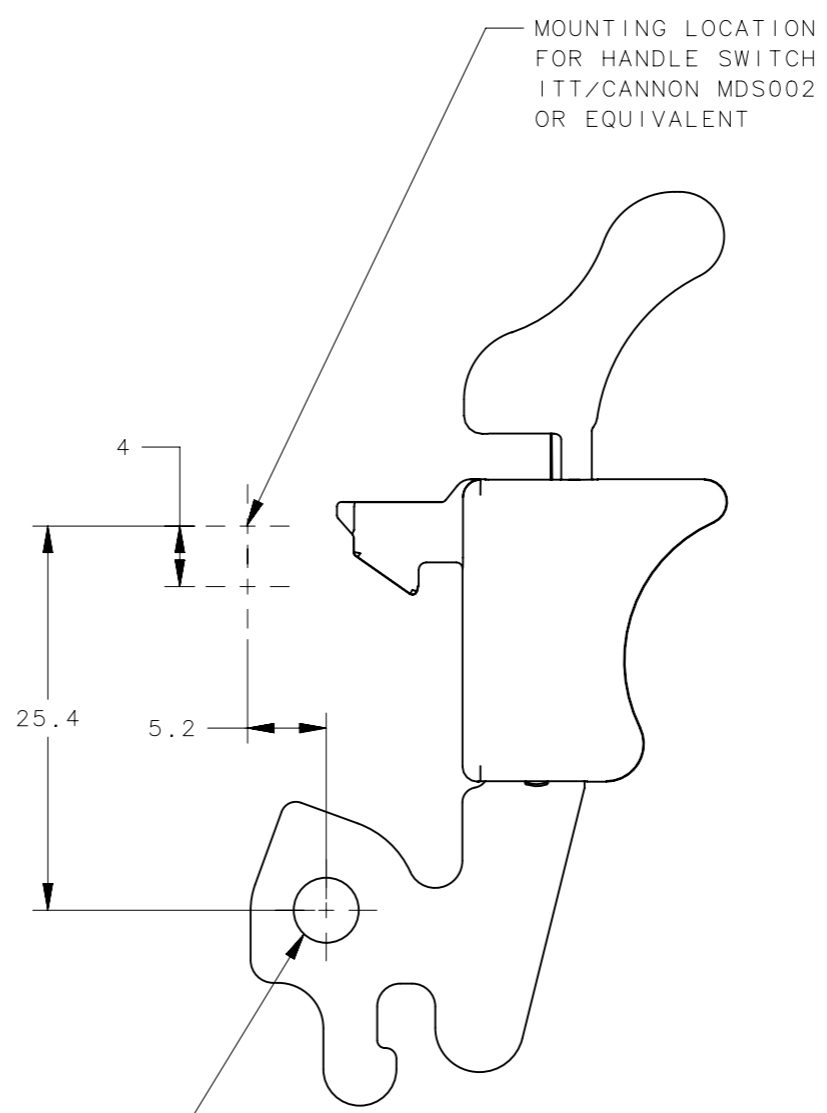
C. FOR ASSEMBLY P7-A-523-81 CATCH PART NUMBER P7-9-521-81 MATERIAL - DIE CAST ZINC ZAMAK 3 NICKEL PLATED.

P7-A-523-81	SEE NOTE C	SEE NOTE C
P7-A-523-11-XXX	SEE NOTE A	SEE J-47-0-3 FOR COLOR ONLY
P7-A-523-11	SEE NOTE A	SEE NOTE A
PART NUMBER	MATERIAL AND FINISH	COLOR
THIRD ANGLE PROJECTION		
MILLIMETERS [IN]		
TOLERANCES UNLESS OTHERWISE NOTED	southco [®] CONNECT • CREATE • INNOVATE	
DESCRIPTION	EJECTOR PMC 2.5mm FACEPLATE	
SIZE	SYSTEM	DWG NO.
A3	NX	J-P7-A-523-11
PER ASME Y14.5M-1994	DRAWN BY	DATE
	RES/AJH	27APR2005
	SCALE	SHEET
	2:1	1 OF 2

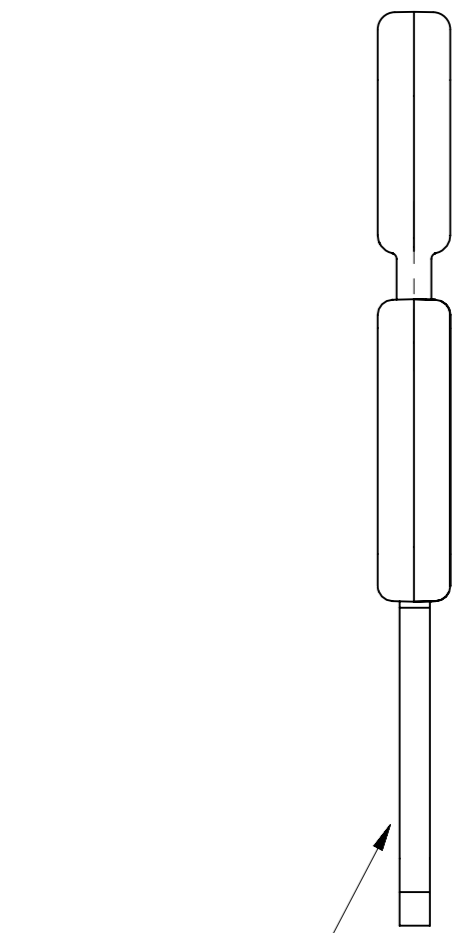
REVISION HISTORY			
REV	DATE	BY	DESCRIPTION
E	11OCT2016	DFB/CMS	PRN: P2016-2266



PANEL PREPARATION
FACEPLATE THICKNESS 2.5mm



MOUNT USING SHOULDER SCREW
SOUTHCO PART NUMBER
P7-0-41665
(ORDERED SEPARATELY)



EJECTOR INSTALLATION

P7-A-523-81	SEE NOTE C	SEE NOTE C
P7-A-523-11-XXX	SEE NOTE A	SEE J-47-0-3 FOR COLOR ONLY
P7-A-523-11	SEE NOTE A	SEE NOTE A
PART NUMBER	MATERIAL AND FINISH	COLOR
THIRD ANGLE PROJECTION		
MILLIMETERS [IN]		
SURFACE AREA	TOLERANCES UNLESS OTHERWISE NOTED	southco [®] CONNECT • CREATE • INNOVATE EJECTOR PMC 2.5mm FACPLATE
VOLUME	ALL DIMENSIONS WITHOUT TOLERANCES ARE FOR REFERENCE ONLY.	
PROPRIETARY ITEM	SIZE A3	SYSTEM NX
EXCEPT FOR USES EXPRESSLY GRANTED IN WRITING, INFORMATION DISCLOSED HEREON IS CONFIDENTIAL AND ALL RIGHTS, PATENT AND OTHERWISE, ARE RESERVED BY SOUTHCO, INC.	PER ASME Y14.5M-1994	DWG NO. J-P7-A-523-11
	DRAWN BY RES/AJH	DATE 27APR2005
		SCALE 2:1
		SHEET 2 OF 2