



PROPRIETARY ITEM - EXCEPT FOR USES EXPRESSLY GRANTED IN WRITING INFORMATION DISCLOSED HEREON IS CONFIDENTIAL AND ALL RIGHTS PATENT AND OTHERWISE ARE RESERVED BY SOUTHCO, INC.

## AMC MODULE HANDLE FLUSH STYLE

DATE	DRAWN	CHKD	SCALE	DRAWING NUMBER
20DEC2006	RES		1:1	J-P7-M-82

REV	DATE	DRAWN/CHKD	DESCRIPTION	HANDLE ASSEMBLY				
A	07FEB2007	RES/	NEW HANDLE GEOMETRY	PART NUMBER	MODULE SIZE	DIM. A		
B	21APR2008	RES/	UPDATE FOR PRODUCT IMPROVEMENTS	P7-M-822	MID SIZE 4HP	17.55		
C	29APR2008	RES/	PRN P2008-0472					
D	03MAR2008	RES/	PRN P2009-0245					

**MILLIMETERS**

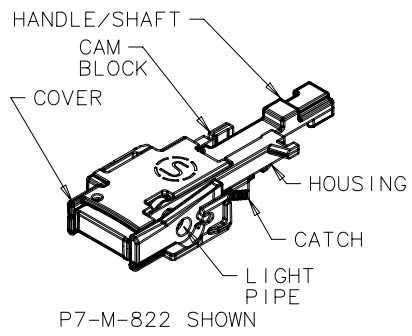
ALL DIMENSIONS WITHOUT TOLERANCES ARE FOR REFERENCE ONLY.

THIRD ANGLE PROJECTION

A4 PAPER SIZE

**SHEET 1 OF 3**

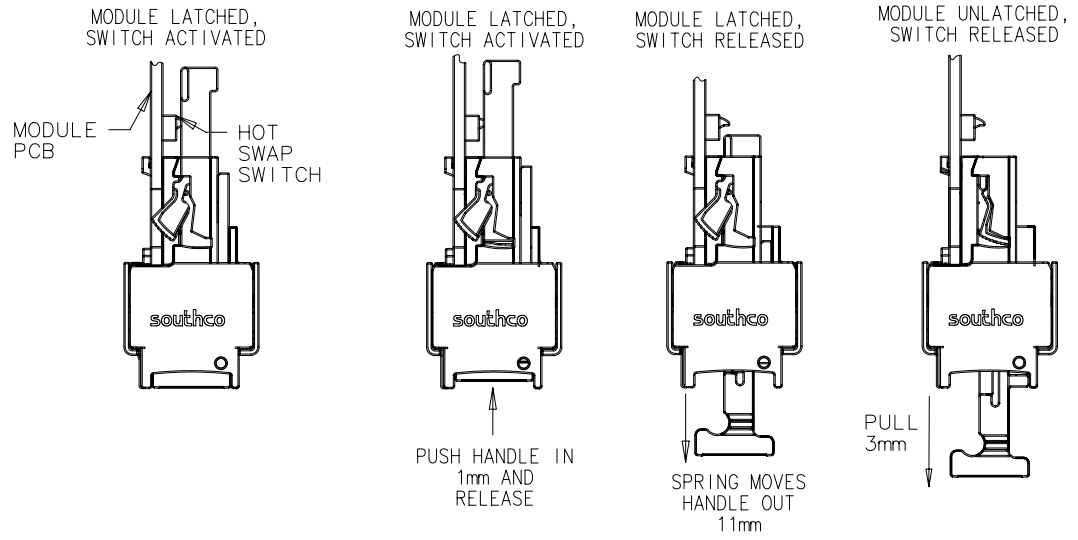
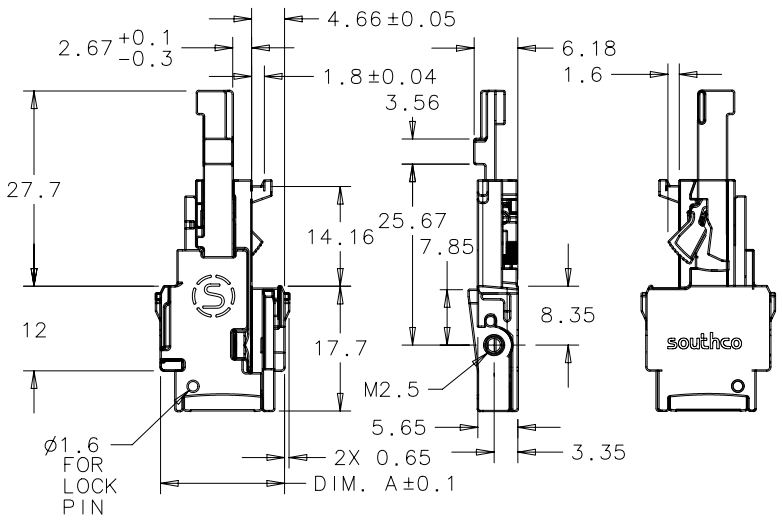
### HANDLE ASSEMBLY



### NOTES:

- A. MOUNT HANDLE AND LIGHT PIPE TO PCB USING M2.5 X 5 PAN HEAD SCREW (NOT SUPPLIED).
- B. MATERIAL AND FINISH:
  - HANDLE/SHAFT: DIE CAST ZINC, BLACK EPOXY E-COAT
  - HOUSING, COVER, CATCH: DIE CAST ZINC, BRIGHT NICKEL PLATE
  - WIRE CATCH, COMPRESSION SPRINGS: TYPE 304 STAINLESS STEEL, NATURAL
  - CAM BLOCK - ABS, UL94-V1; NICKEL PLATE
  - LIGHT PIPE: POLYCARBONATE, CLEAR, UL94-V0
  - \* THIS ASSEMBLY IS RoHS COMPLIANT.
- C. HANDLE PORTION MEETS SOUTHCO COSMETIC SPECIFICATION S-121-03 CLASS B
- D. MODULE HANDLE MEETS REQUIREMENTS OF PICMG AMC.0 R2.0.

### HANDLE OPERATION





PROPRIETARY ITEM - EXCEPT FOR USES EXPRESSLY GRANTED IN WRITING INFORMATION DISCLOSED HEREON IS CONFIDENTIAL AND ALL RIGHTS PATENT AND OTHERWISE ARE RESERVED BY SOUTHCO, INC.

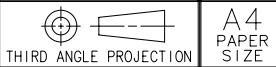
AMC MODULE HANDLE  
FLUSH STYLE

DATE	DRAWN	CHKD	SCALE	DRAWING NUMBER
20DEC2006	RES		1:1	J-P7-M-82

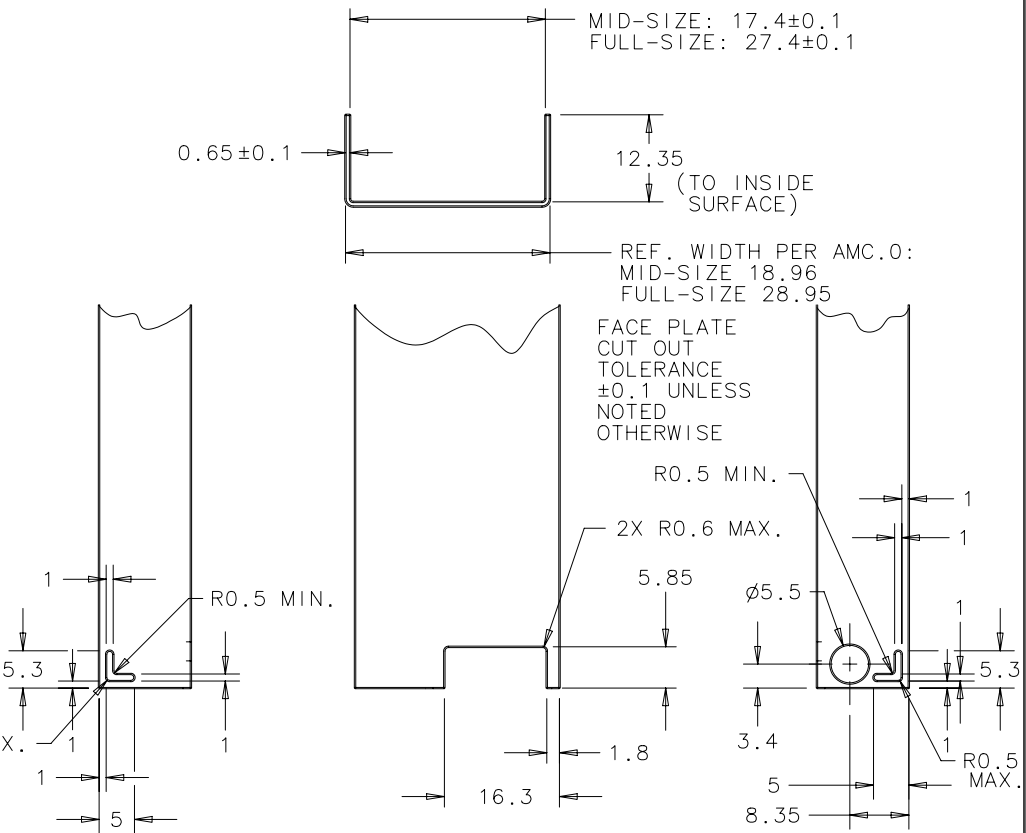
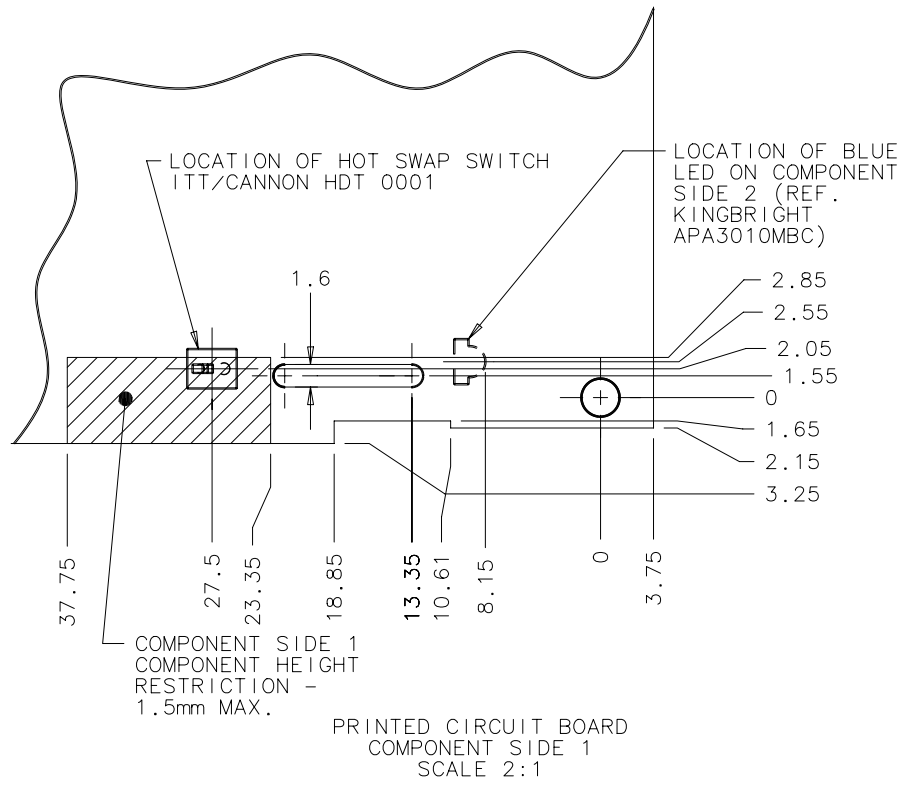
REV	DATE	DRAWN/CHKD	DESCRIPTION	HANDLE ASSEMBLY				
A	07FEB2007	RES/	NEW HANDLE GEOMETRY	PART NUMBER	MODULE SIZE	DIM. A		
B	21APR2008	RES/	UPDATE FOR PRODUCT IMPROVEMENTS	P7-M-822	MID SIZE 4HP	17.55		
C	29APR2008	RES/	PRN P2008-0472	P7-M-823	FULL SIZE 6HP	27.55		
D	03MAR2008	RES/	PRN P2009-0245					

MILLIMETERS

ALL DIMENSIONS WITHOUT TOLERANCES ARE FOR REFERENCE ONLY.



SHEET 2 OF 3



ALL PANEL PREPARATION TOLERANCES ARE ±0.1  
REFER TO PICMG AMC.0 R2.0 FOR ADDITIONAL  
PCB DIMENSIONS

**southco®**

PROPRIETARY ITEM - EXCEPT FOR USES EXPRESSLY GRANTED IN WRITING INFORMATION DISCLOSED HEREON IS CONFIDENTIAL AND ALL RIGHTS PATENT AND OTHERWISE ARE RESERVED BY SOUTHCO, INC.

AMC MODULE HANDLE  
FLUSH STYLE

DATE	DRAWN	CHKD	SCALE	DRAWING NUMBER
20DEC2006	RES		1:1	J-P7-M-82

REV	DATE	DRAWN/CHKD	DESCRIPTION	HANDLE ASSEMBLY				
A	07FEB2007	RES/	NEW HANDLE GEOMETRY	PART NUMBER	MODULE SIZE	DIM. A		
B	21APR2008	RES/	UPDATE FOR PRODUCT IMPROVEMENTS	P7-M-822	MID SIZE 4HP	17.55		
C	29APR2008	RES/	PRN P2008-0472	P7-M-823	FULL SIZE 6HP	27.55		
D	03MAR2008	RES/	PRN P2009-0245					

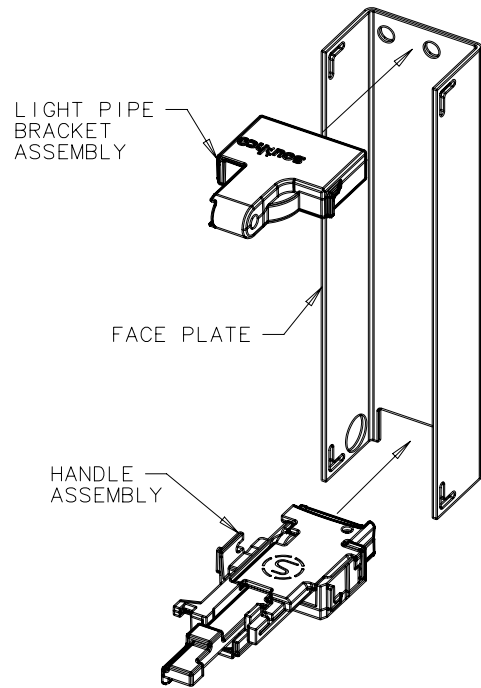
MILLIMETERS

ALL DIMENSIONS WITHOUT TOLERANCES ARE FOR REFERENCE ONLY.

THIRD ANGLE PROJECTION  
A4 PAPER SIZE

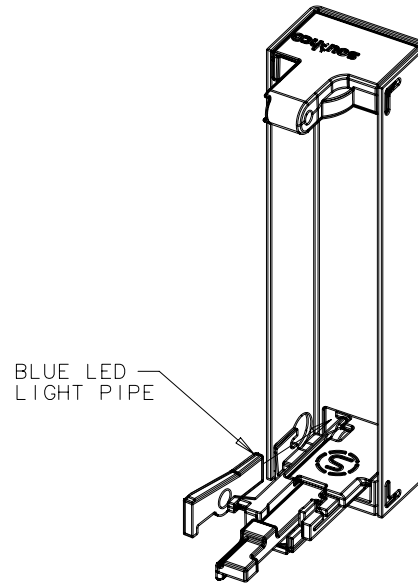
SHEET 3 OF 3

FACE PLATE ASSEMBLY

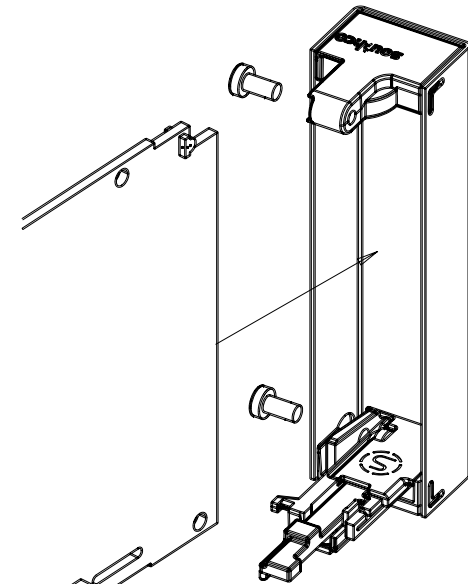


1. SNAP HANDLE ASSEMBLY AND LIGHT PIPE ASSEMBLY INTO FACEPLATE

SEE DRAWING J-P7-L-81 FOR LIGHT PIPE BRACKET ASSEMBLY DETAILS



2. INSERT BLUE LED LIGHT PIPE INTO HANDLE ASSEMBLY AND THROUGH FACE PLATE. LIGHT PIPE SHOULD BE POSITIONED AGAINST OUTSIDE WALL OF HANDLE ASSEMBLY.



3. INSERT PCB INTO FACE PLATE ASSEMBLY AND SECURE WITH M2.5 X 5 SCREWS (NOT SUPPLIED) BLUE LED LIGHT PIPE IS LOCATED ON COMPONENT SIDE 2 OF PCB