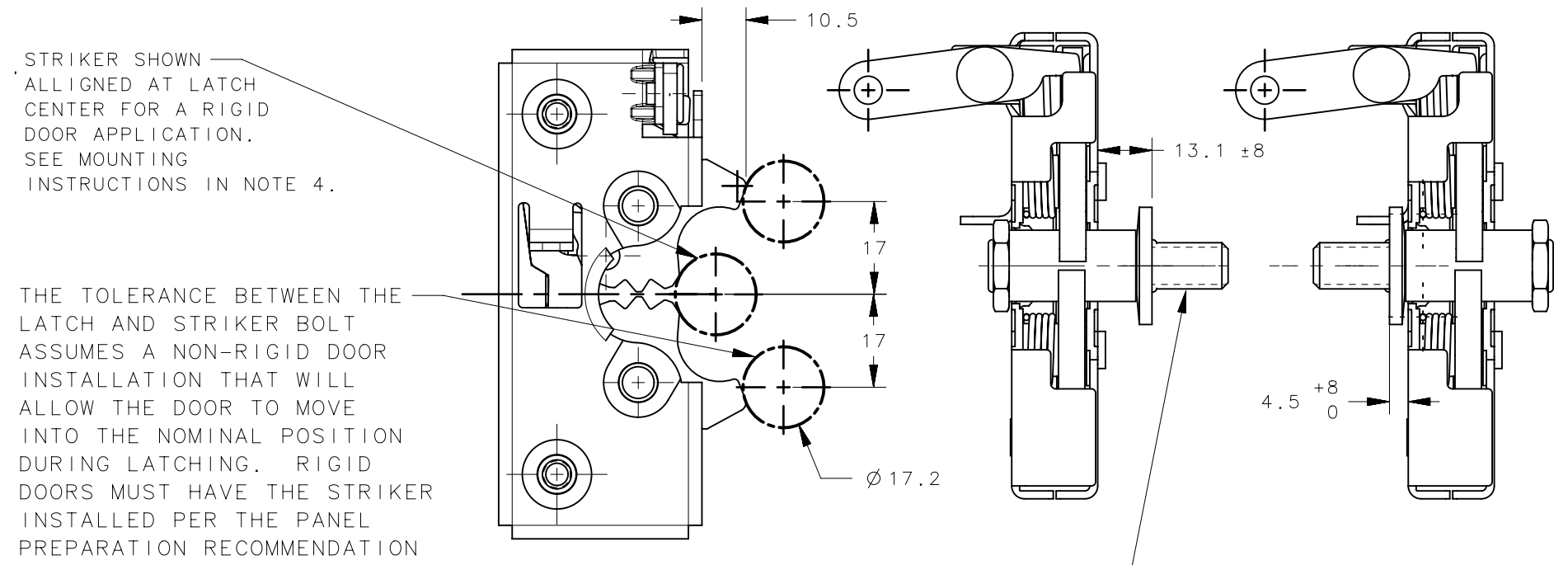


REVISION HISTORY			
REV	DATE	BY	DESCRIPTION
01	21NOV07	CMK	INITIAL RELEASE: UPDATED IN NX
A	26JUN08	CMK	RELEASED
B	29MAY09	CMK	PRN: 2009-0669
C	10AUG09	CMK	PRN: 2009-0946
D	14NOV2022	PSP	PRN: P2022-2000

NOTES

- ASSEMBLY COMPLIES WITH LATCH REQUIREMENTS OF FMVSS 206 WHEN TESTED IN ACCORDANCE WITH SAE J839.
- MATERIALS:**
 PINS, LEVER, RIVET: STEEL, ZINC PLATE BRIGHT CHROMATE
 PAWLS, AND TRIGGER: HEAT TREATED CARBON STEEL, LUBRICATED WITH OVEN CURED DRY LUBRICANT.
 SPRINGS: STAINLESS STEEL, PASSIVATED (BLACK OXIDE)
 FRAME HSG. FRONT AND BACK: HIGH STRENGTH STEEL, ZINC PLATED BRIGHT CHROMATE
- MAXIMUM RECCOMENDED MOUNTING TOURQE NOT TO EXCEDE 13.3 N-m (120in-lbs)
- INSTALATION INSTRUCTIONS:**
 -INSTALL SOUTHCO STRIKER BOLT ASSEMBLY IN DOOR FRAME
 -CLOSE DOOR CHECKING FOR INTERFERENCE OR MISALIGNMENT
 -ADJUST STRIKER AS NECESSARY SHIM IF REQUIRED TO ACHIEVE PROPER POSITIONING OF STRIKER HEAD.
 -ADJUST STRIKER SO IT ENGAGES IN THE CENTER OF THE LATCH
 -VERIFY THAT BOTH STAGES OF LATCH ARE FUNCTIONAL
 -CHECK DOOR ALIGNMENT AND SEAL PRESSURES.
- PAWL OPENING ALLOWS FOR SELF-ALIGNMENT OF FLEXIBLE DOOR SYSTEMS ONLY, CONTACT SOUTHCO SALES OR ENGINEERING FOR APPLICATION ASSISTANCE.



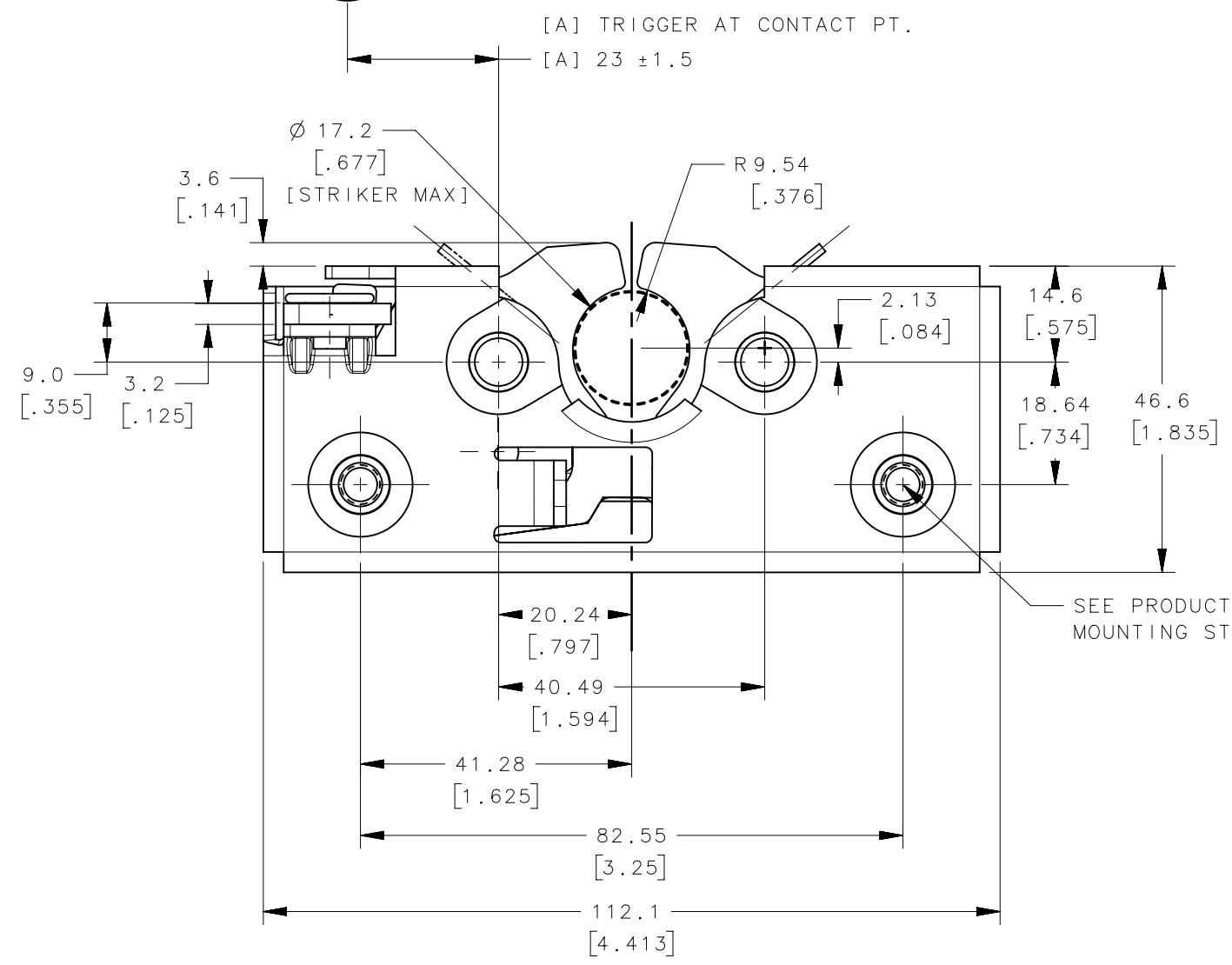
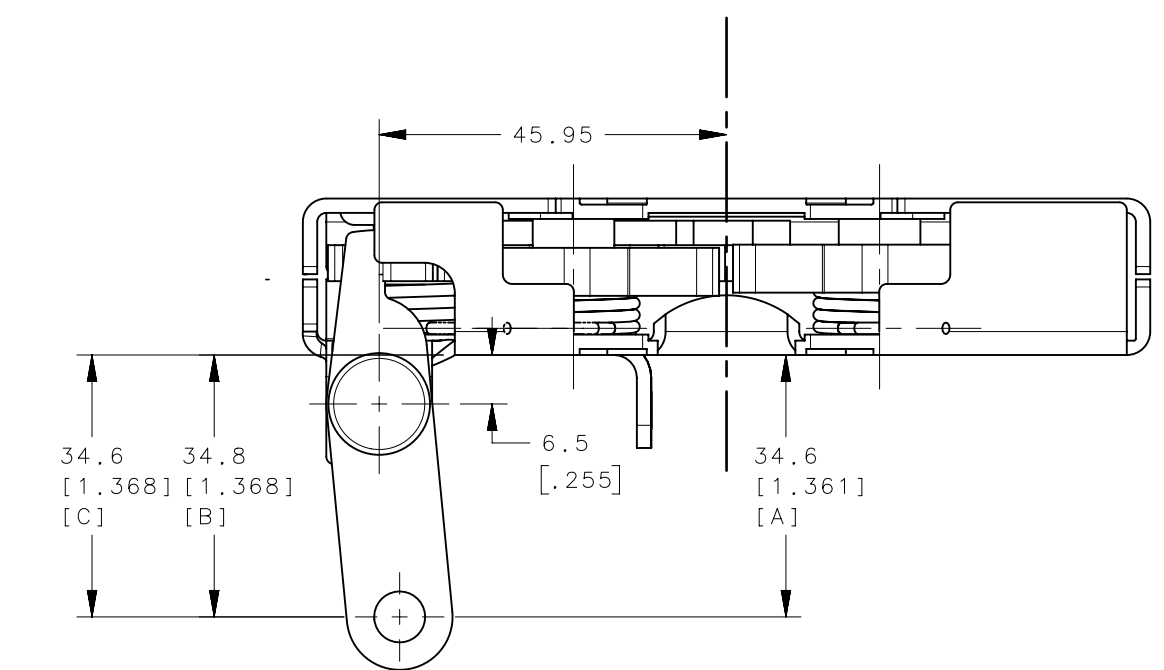
STRIKER SHOWN ALIGNED AT LATCH CENTER FOR A RIGID DOOR APPLICATION. SEE MOUNTING INSTRUCTIONS IN NOTE 4.

THE TOLERANCE BETWEEN THE LATCH AND STRIKER BOLT ASSUMES A NON-RIGID DOOR INSTALLATION THAT WILL ALLOW THE DOOR TO MOVE INTO THE NOMINAL POSITION DURING LATCHING. RIGID DOORS MUST HAVE THE STRIKER INSTALLED PER THE PANEL PREPARATION RECOMMENDATION

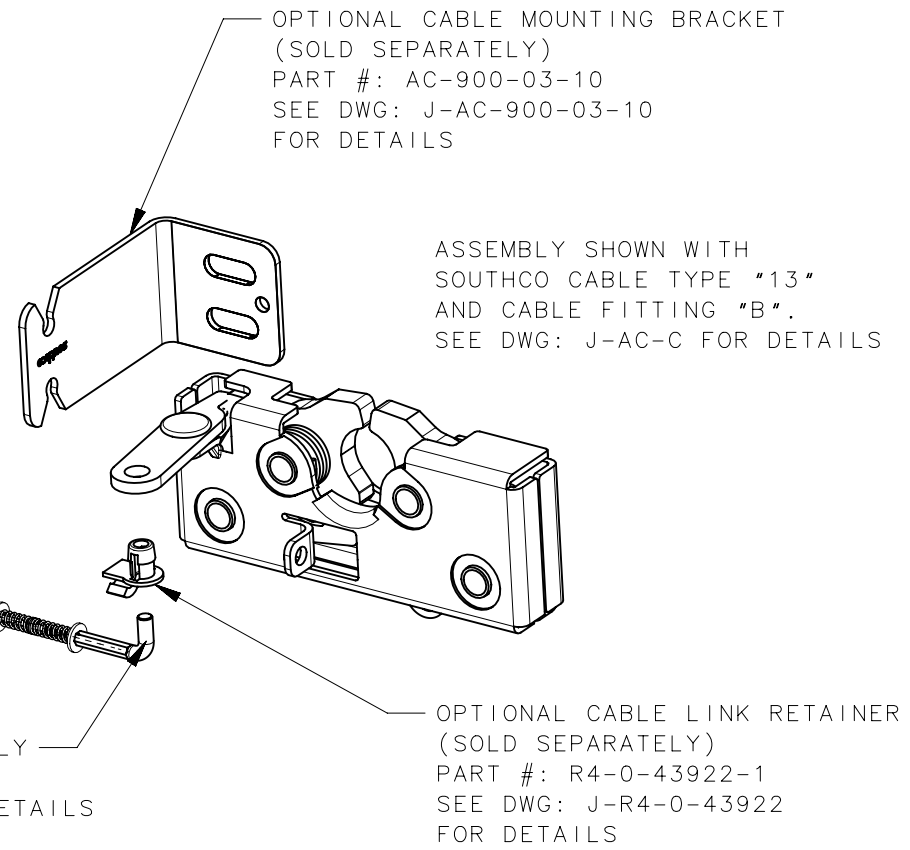
STRIKER BOLT ASSEMBLY (SOLD SEPARATELY) SEE J-R4-90-400 FOR DETAILS

STRIKER SHOWN AT NOMINAL MOUNTING LOCATIONS FROM BOTH SIDES

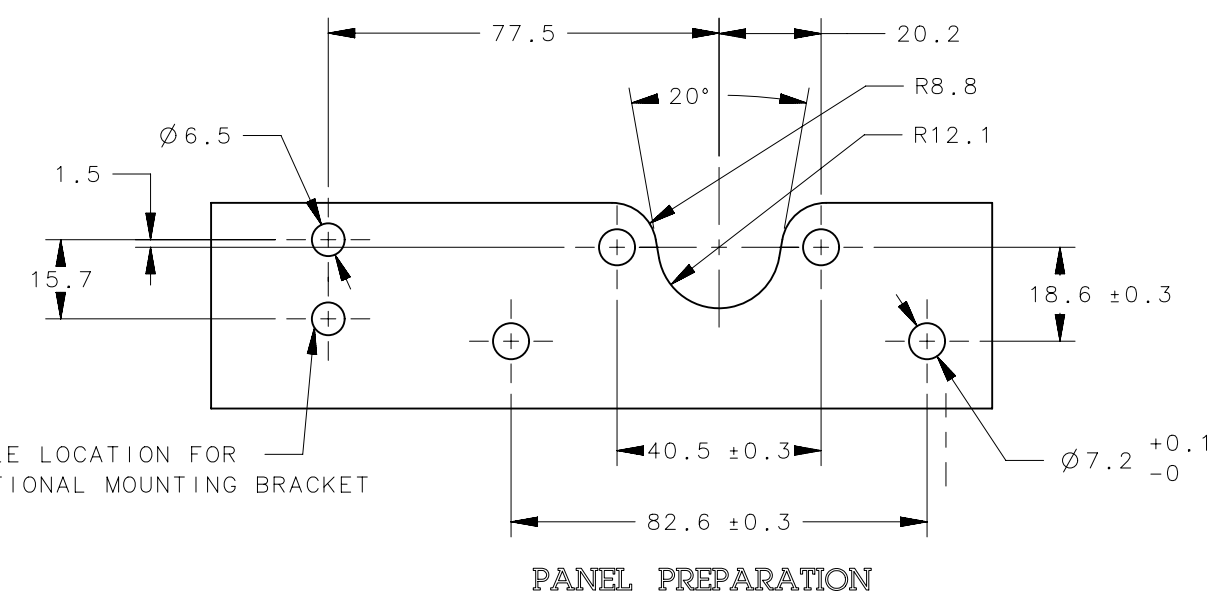
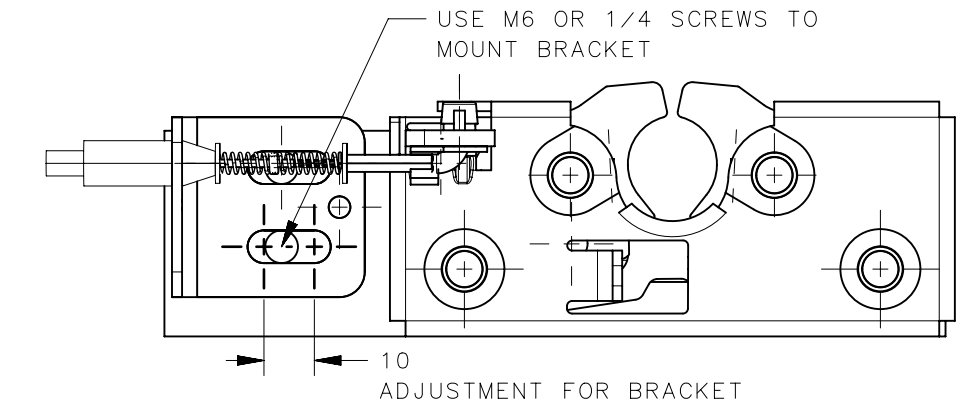
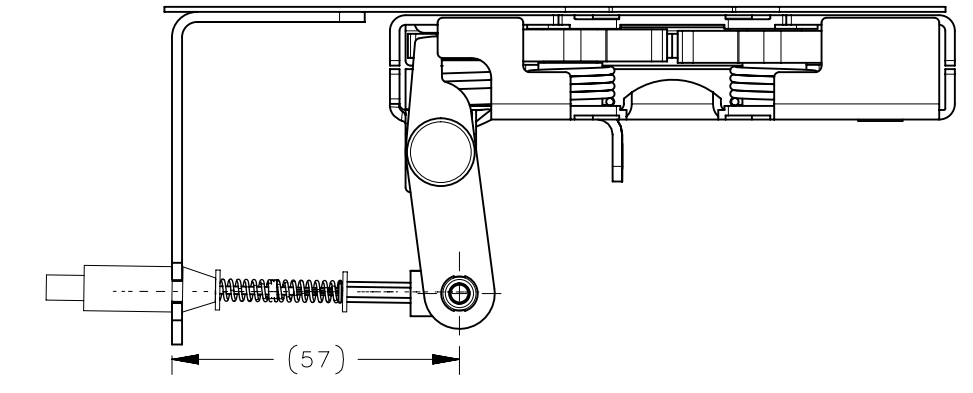
AVAILABLE STRIKER BOLTS	
PART NUMBER	THREAD SIZE
R4-90-491-10	7/16-14
R4-90-4101-10	1/2-13
R4-90-441-10	M12-1.75



OPTIONAL CABLE ASSEMBLY (SOLD SEPARATELY) PART #: AC-C-XX-XX SEE DWG: J-AC-C FOR DETAILS



ASSEMBLY SHOWN WITH SOUTHCO CABLE TYPE *13* AND CABLE FITTING *B*. SEE DWG: J-AC-C FOR DETAILS



R4-50-42-101-10	LEFT HANDED	M6 MOUNT
R4-50-41-101-10	LEFT HANDED	1/4-20 MOUNT
R4-50-40-101-10	LEFT HANDED	THRU MOUNT
R4-50-32-101-10	RIGHT HANDED	M6 MOUNT
R4-50-31-101-10	RIGHT HANDED	1/4-20 MOUNT
R4-50-30-101-10	RIGHT HANDED	THRU MOUNT
SOUTHCO PART NUMBER	HANDED	MOUNT STYLE

AVAILABLE OPTIONS

- LEFT OR RIGHT HAND CONFIGURATIONS (LEFT HAND SHOWN)
- MOUNT WITH THRU HOLE, 1/4-20, OR M6x1 OPTIONS
- ADDITIONAL LEVER OPTIONS AVAILABLE UPON REQUEST: CONTACT SOUTHCO ENGINEERING AND/OR SALES

THIRD ANGLE PROJECTION			southco CONNECT · CREATE · INNOVATE			
MILLIMETERS [IN]		SIZE	SYSTEM	DWG NO.		
SURFACE AREA VOLUME PROPRIETARY ITEM <small>EXCEPT FOR USES EXPRESSLY GRANTED IN WRITING, INFORMATION DISCLOSED HEREIN IS CONFIDENTIAL AND ALL RIGHTS, PATENT AND OTHERWISE, ARE RESERVED BY SOUTHCO, INC.</small>		C	NX	J-R4-50		
PER ASME Y14.5M-1994		DRAWN BY	DATE	SCALE	SHEET	
		CMK	21NOV07	2/3	1 OF 1	