

REVISION HISTORY

REV	DATE	BY	DESCRIPTION
B	09JUL2014	TVA/MJS	PRN: P2014-1050

NOTES:

A. INSTALLATION INSTRUCTIONS:

1. DRILL OR PUNCH INSTALLATION HOLE.
2. PLACE FERRULE INTO INSTALLATION HOLE.
3. PROVIDE SOLID BACK-UP BEHIND HOLE WITH CLEARANCE HOLE FOR STUD.
4. PRESS ON HEAD OF STUD UNTIL SHOULDER OF FERRULE IS FIRMLY AGAINST OUTER PANEL. RECOMMENDED LOAD OF 5,000 N FOR 5052-H32 ALUMINUM. RECOMMENDED LOAD OF 8,000 N FOR STEEL,  $R_b \leq 60$  MAX.

B. MATERIAL AND FINISH:

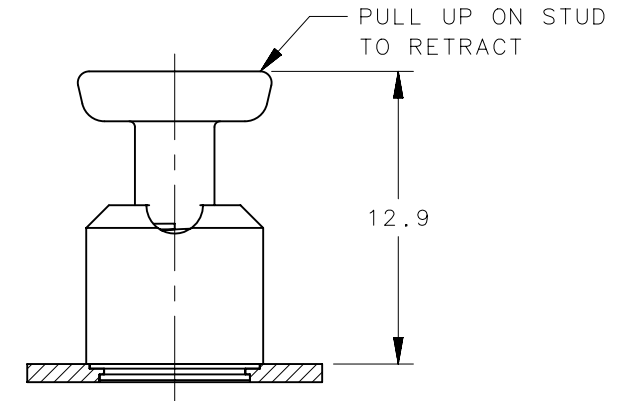
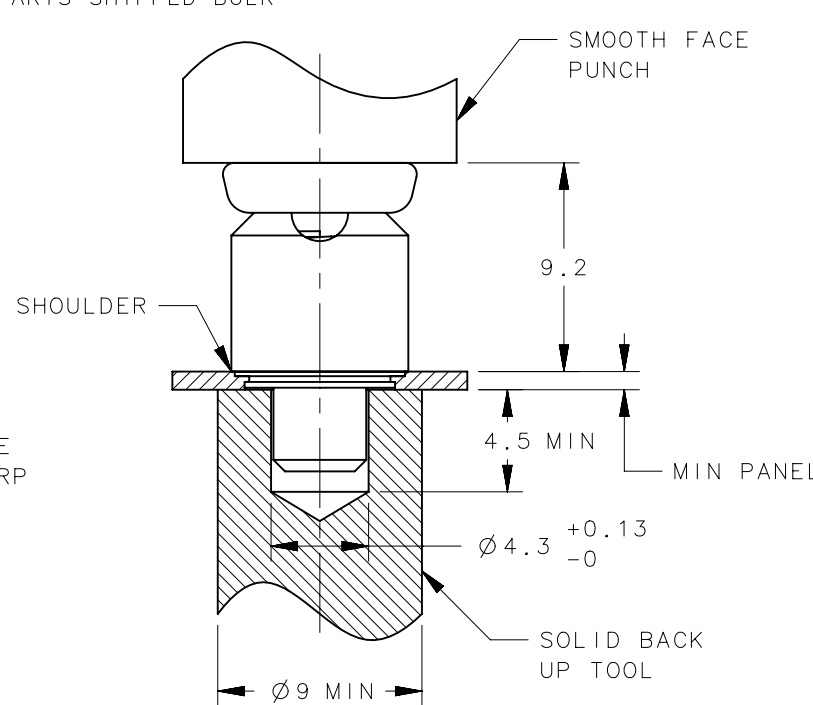
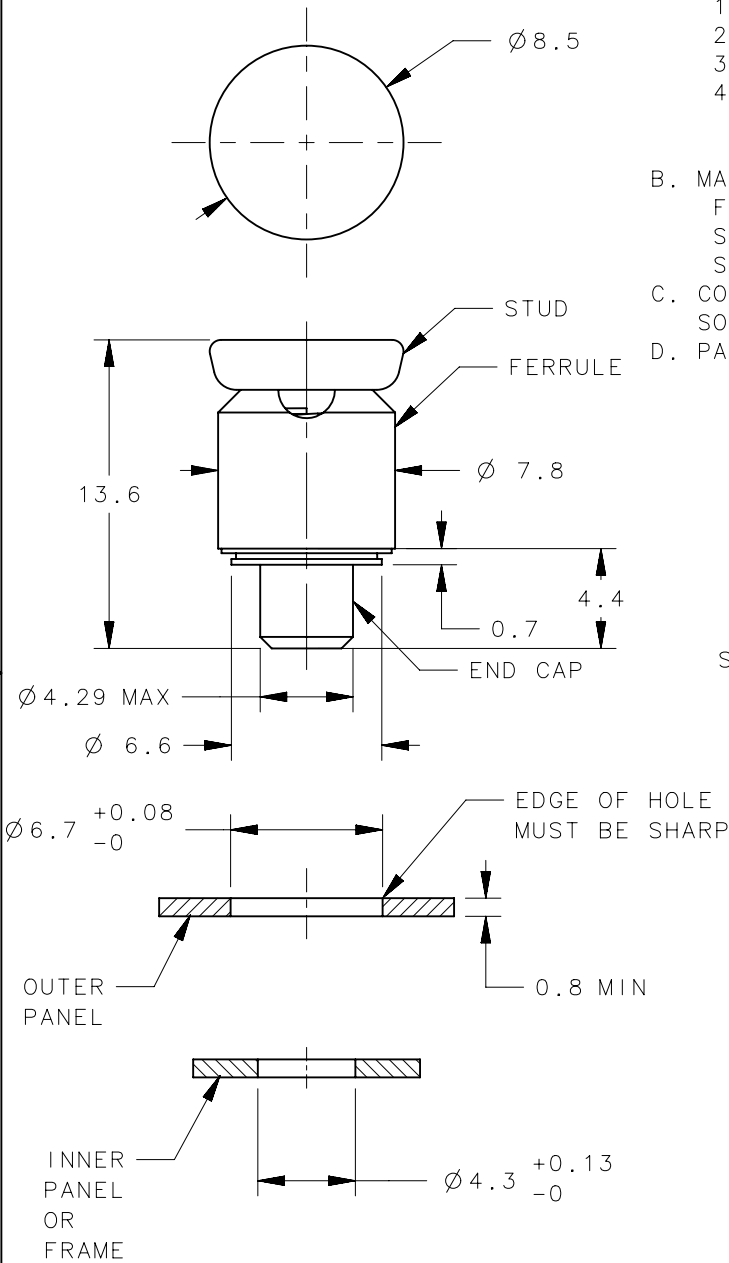
FERRULE AND ENDCAP: STEEL, ZINC PLATE PLUS SEALER  
 SPRING: STAINLESS STEEL, PASSIVATED (NOT SHOWN)  
 STUD: HARDENED STEEL, ZINC PLATE PLUS SEALER

C. COSMETIC SPECIFICATION: ALL SURFACES (UNLESS OTHERWISE SPECIFIED) ARE TO BE PER SOUTHCO SPECIFICATION S-121-02, CLASS B (REFER TO SECTION 1.0 FOR CROSS REFERENCE TABLE)

D. PARTS SHIPPED BULK



SCALE 1:1



56-11-15
PART NUMBER

PROPRIETARY ITEM EXCEPT FOR USES EXPRESSLY GRANTED IN WRITING, INFORMATION DISCLOSED HEREON IS CONFIDENTIAL AND ALL RIGHTS, PATENT AND OTHERWISE, ARE RESERVED BY SOUTHCO, INC.	THIRD ANGLE PROJECTION					<b>southco</b> <sup>®</sup> CONNECT • CREATE • INNOVATE			
	MILLIMETERS [IN]								
	TOLERANCES UNLESS OTHERWISE NOTED	DESCRIPTION				Quick Access Fastener			
	ALL DIMENSIONS WITHOUT TOLERANCES ARE FOR REFERENCE ONLY.	56 MINI PRESS-IN ASSEMBLY STAY OPEN				SIZE	SYSTEM	DWG NO.	J-56-11
PER ASME Y14.5M-1994	DRAWN BY		TVA	DATE	12SEP2013	SCALE	3:1	SHEET	1 OF 1