

REVISION HISTORY

REV	DATE	BY	DESCRIPTION
B	09JUL2014	TVA/MJS	PRN: P2014-1050



SCALE 1:1



SCALE 1:1

NOTES:

A. INSTALLATION INSTRUCTIONS:

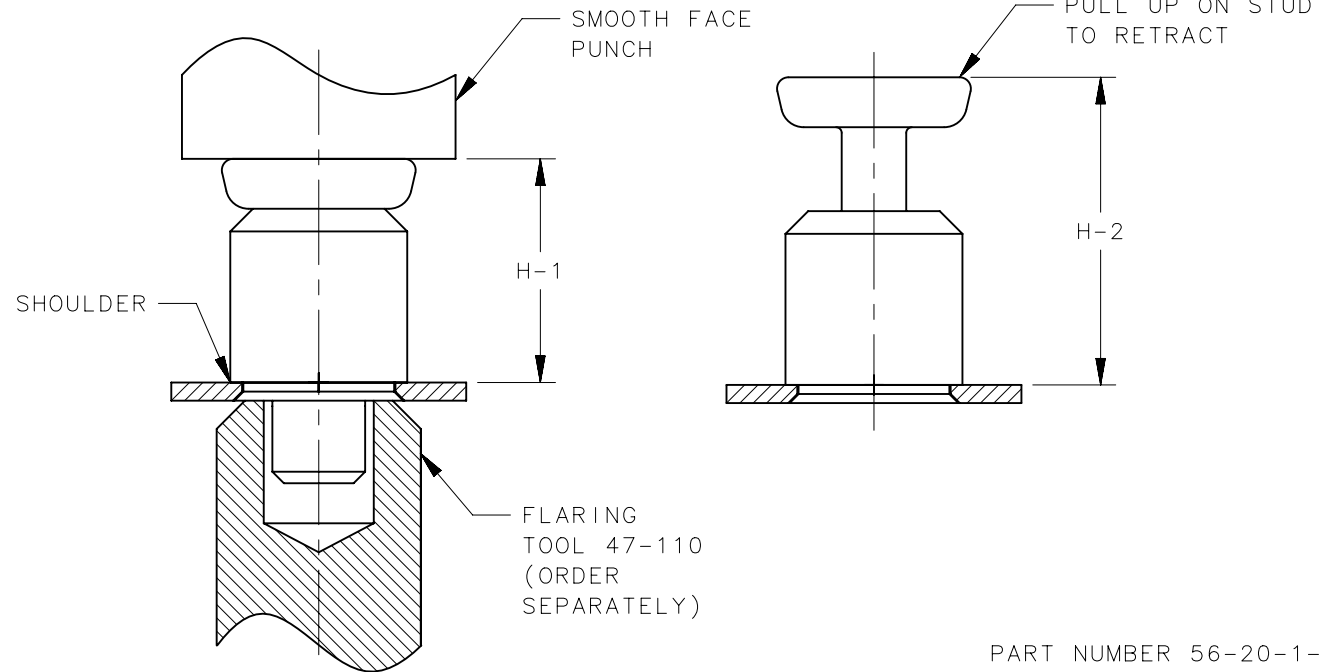
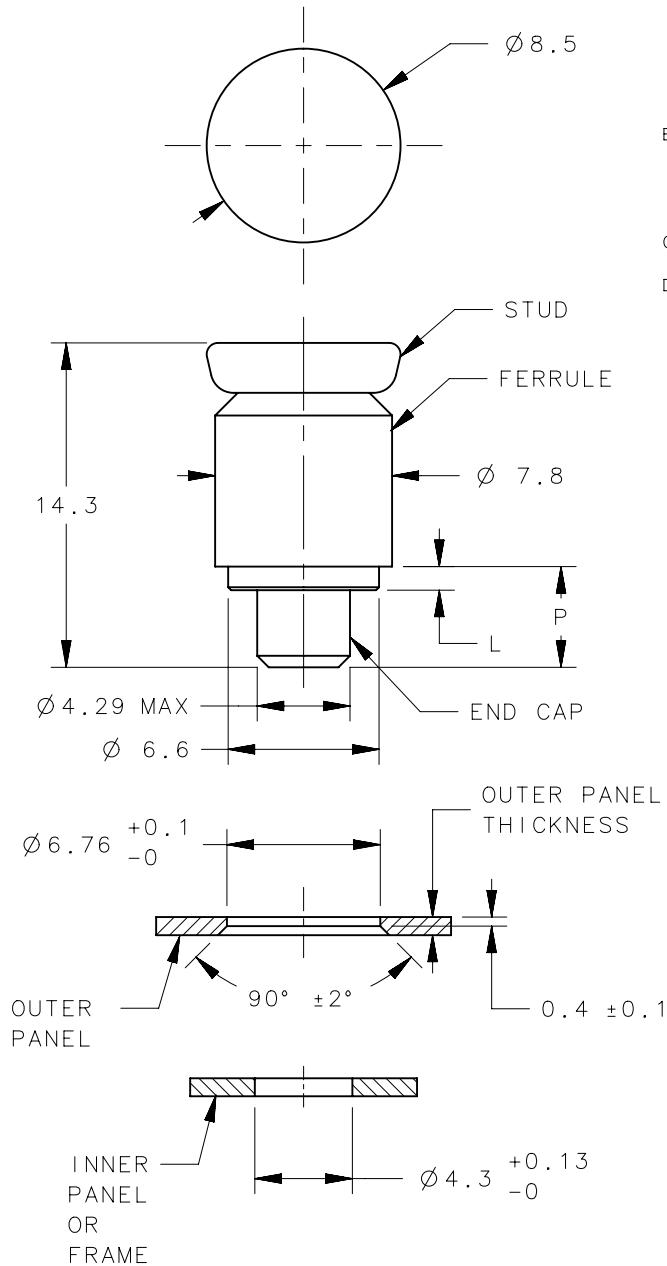
1. DRILL OR PUNCH INSTALLATION HOLE.
2. PLACE FERRULE INTO INSTALLATION HOLE.
3. PROVIDE SOLID BACK-UP BEHIND HEAD
4. PRESS ON HEAD OF STUD UNTIL SHOULDER OF FERRULE IS FIRMLY AGAINST OUTER PANEL AND FLARE WITH 47-110. RECOMMENDED INSTALLATION LOAD OF 2,000 N

B. MATERIAL AND FINISH:

- ENDCAP: STEEL, ZINC PLATE PLUS SEALER
- FERRULE: ALUMINUM, NATURAL
- SPRING: STAINLESS STEEL, PASSIVATED (NOT SHOWN)
- STUD: HARDENED STEEL, ZINC PLATE PLUS SEALER

C. COSMETIC SPECIFICATION: ALL SURFACES (UNLESS OTHERWISE SPECIFIED) ARE TO BE PER SOUTHCO SPECIFICATION S-121-02, CLASS B (REFER TO SECTION 1.0 FOR CROSS REFERENCE TABLE)

D. PARTS SHIPPED BULK



PART NUMBER 56-20-1-15 SHOWN

56-20-2-15	1.5	2.3	5.2	1.8	9.1	12.8
56-20-1-15	0.8	1.5	4.4	1.0	9.9	13.6
PART NUMBER	OUTER PANEL MIN	OUTER PANEL MAX	P	L	H-1	H-2

THIRD ANGLE PROJECTION

MILLIMETERS [IN]

TOLERANCES UNLESS OTHERWISE NOTED

ALL DIMENSIONS WITHOUT TOLERANCES ARE FOR REFERENCE ONLY.

PROPRIETARY ITEM
EXCEPT FOR USES EXPRESSLY GRANTED IN WRITING, INFORMATION DISCLOSED HEREON IS CONFIDENTIAL AND ALL RIGHTS, PATENT AND OTHERWISE, ARE RESERVED BY SOUTHCO, INC.

PER ASME Y14.5M-1994

southco[®]
CONNECT • CREATE • INNOVATE

DESCRIPTION
Quick Access Fastener
56 MINI FLARE-IN ASSEMBLY NON STAY OPEN

SIZE A4 SYSTEM NX DWG NO. J-56-20

DRAWN BY TVA DATE 12SEP2013 SCALE 3:1 SHEET 1 OF 1