

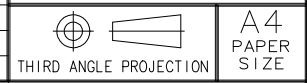


PROPRIETARY ITEM - EXCEPT FOR USES EXPRESSLY GRANTED IN WRITING INFORMATION DISCLOSED HEREON IS CONFIDENTIAL AND ALL RIGHTS PATENT AND OTHERWISE ARE RESERVED BY SOUTHCO, INC.

SOUTHCO No.82 WING HEAD STUDS

DATE	DRAWN	CHKD	SCALE	DRAWING NUMBER
03SEP2015	CMS	NJF	2 : 1	J-82-55

REV.	DATE	DRAWN	REVISION	-XX	MATERIAL AND FINISH	INCHES
A	03SEP2015	CMS/NJF	PRN: P2015-1255	-13	STEEL, CASE HARDENED; NATURAL	X°.....±2°
				-16	STEEL, CASE HARDENED; ZINC PLATE, CHROMATE PLUS SEALER	X/X.....±1/32
				-17	STEEL, CASE HARDENED; ZINC PLATE, YELLOW CHROMATE	.XX.....±.015
				-20	STAINLESS STEEL; PASSIVATED	.XXX.....±.010
				-31	STEEL, CASE HARDENED; BLACK OXIDE	
				-44	STAINLESS STEEL; BLACK OXIDE, SEMI-GLOSS	
				-52	STEEL, CASE HARDENED; PLATED, ZINC-NICKEL BLACK	



PART No.	U	L	F	T
82-12-040-XX	.067	.185	.335	.425
82-060-	.087	.205	.355	.445
82-080-	.107	.225	.375	.465
82-100-	.127	.245	.395	.485
82-120-	.147	.265	.415	.505
82-140-	.167	.285	.435	.525
82-160-	.187	.305	.455	.545
82-180-	.207	.325	.475	.565
82-200-	.227	.345	.495	.585
82-220-	.247	.365	.515	.605
82-240-	.267	.385	.535	.625
82-260-	.287	.405	.555	.645
82-280-	.307	.425	.575	.665
82-300-	.327	.445	.595	.685
82-320-	.347	.465	.615	.705
82-340-	.367	.485	.635	.725
82-360-	.387	.505	.655	.745
82-380-	.407	.525	.675	.765
82-400-	.427	.545	.695	.785
82-420-	.447	.565	.715	.805
82-440-	.467	.585	.735	.825
82-460-	.487	.605	.755	.845
82-480-	.507	.625	.775	.865
82-500-	.527	.645	.795	.885
82-12-520-XX	.547	.665	.815	.905

PART No.	U	L	F	T
82-12-540-XX	.567	.685	.835	.925
82-560-	.587	.705	.855	.945
82-580-	.607	.725	.875	.965
82-600-	.627	.745	.895	.985
82-620-	.647	.765	.915	1.005
82-640-	.667	.785	.935	1.025
82-660-	.687	.805	.955	1.045
82-680-	.707	.825	.975	1.065
82-700-	.727	.845	.995	1.085
82-720-	.747	.865	1.015	1.105
82-740-	.767	.885	1.035	1.125
82-760-	.787	.905	1.055	1.145
82-780-	.807	.925	1.075	1.165
82-800-	.827	.945	1.095	1.185
82-820-	.847	.965	1.115	1.205
82-840-	.867	.985	1.135	1.225
82-860-	.887	1.005	1.155	1.245
82-880-	.907	1.025	1.175	1.265
82-900-	.927	1.045	1.195	1.285
82-920-	.947	1.065	1.215	1.305
82-940-	.967	1.085	1.235	1.325
82-960-	.987	1.105	1.255	1.345
82-980-	1.007	1.125	1.275	1.365
82-12-1000-XX	1.027	1.145	1.295	1.385

