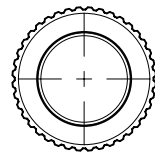
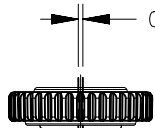


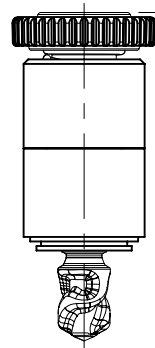
No. 2 PHILLIPS RECESS



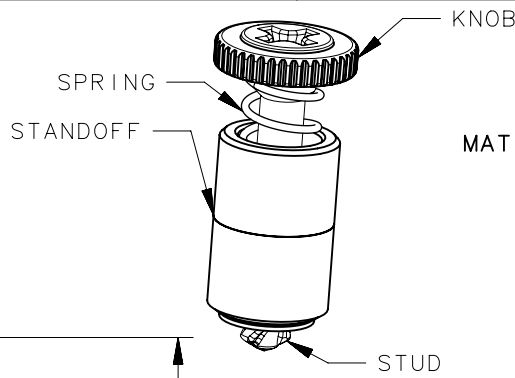
NO RECESS



UNFASTENED



FASTENED



MATERIALS AND FINISH: RoHS COMPLIANT
 STUD : STEEL, HARDENED, ZINC PLATE PLUS SEALER
 STANDOFF : STEEL, HARDENED, ZINC PLATE PLUS SEALER
 KNOB : PC/ABS UL94-V0 RATED, FLAME RETARDANT;
 TRIARYLPHOSPHATE(DOES NOT CONTAIN BROMINATED, CHLORINATED, OR HALOGEATED ADDITIVES).
 SPRING: MUSIC WIRE, ZINC PLATE

REVISION HISTORY			
REV	DATE	BY	DESCRIPTION
C	20NOV2019	ER/LC	PRN: P2019-2850

0.3 TOTAL FLOAT OF STUD IN STANDOFF

H-2 = (14.8)
 AT FASTENED POSITION
 (INSPECTION HEIGHT = 14.2
 KNOB PRESSED TO END)

Ø 6.3

THIS SIDE MUST BE SHARP

Ø 6.4 +0.03
 -0.05

"A" = FASTENER PANEL THICKNESS

FASTENER PANEL PREPARATION

TO INSTALL FASTENER:

1. PUNCH HOLE IN PANEL PER PANEL PREPARATION VIEW.
2. INSERT FASTENER AND PRESS INTO PANEL USING A BACK UP TOOL WITH CLEARANCE HOLE OF Ø 3.8±0.2 FOR THE STUD END.

ASSEMBLY PART NUMBER

D9-52-13A₃B-KEEE

- A₁ - INSTALL
 1 = 0.9 -1.2 PANEL ("A")
- A₂ - STUD OD
 3 = Ø 3.5 STUD OD
- A₃ - RECESS
 0 = NO RECESS
 1 = No. 2 PHILLIPS
- B - STUD LENGTH
 1
 2
 3
 4

- EEE - KNOB COLOR
 000 = BLACK
 SEE J-47-0-3 FOR ADDITIONAL COLORS
- K - KNOB STYLE
 K = KNURLED

	THIRD ANGLE PROJECTION
	MILLIMETERS [IN]
	TOLERANCES UNLESS OTHERWISE NOTED
	ALL DIMENSIONS WITHOUT TOLERANCES ARE FOR REFERENCE ONLY.
PROPRIETARY ITEM <small>EXCEPT FOR USES EXPRESSLY GRANTED IN WRITING, INFORMATION DISCLOSED HEREON IS CONFIDENTIAL AND ALL RIGHTS, PATENT AND OTHERWISE, ARE RESERVED BY SOUTHCO, INC.</small>	PER ASME Y14.5M-1994

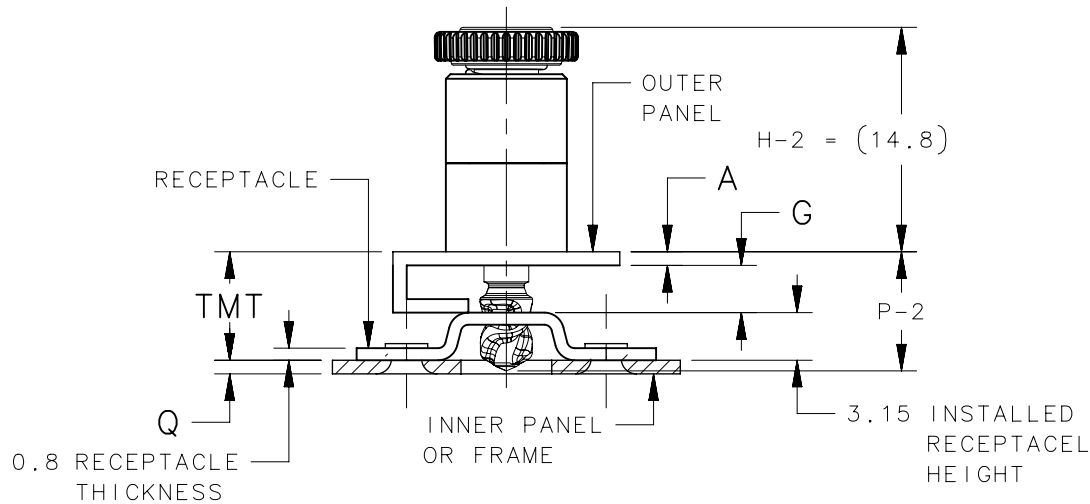
D9-52-13AB-KEEE		FASTENER ASSEMBLY	
PART NUMBER		TYPE OF COMPONENT	
southco [®] CONNECT • CREATE • INNOVATE			
DESCRIPTION QUICK ACCESS FASTENER(OVER-MOLD) D9-52 PRESS-IN STYLE, 3.5 STUD SIZE			
SIZE A4	SYSTEM NX	DWG NO. J-D9-52-13-KEEE	
DRAWN BY ER	DATE 18JAN2019	SCALE 2:1	SHEET 1 OF 3

LENGTH 2 STUD SHOWN IN ALL VIEWS

REVISION HISTORY			
REV	DATE	BY	DESCRIPTION
C	20NOV2019	ER/LC	PRN: P2019-2850

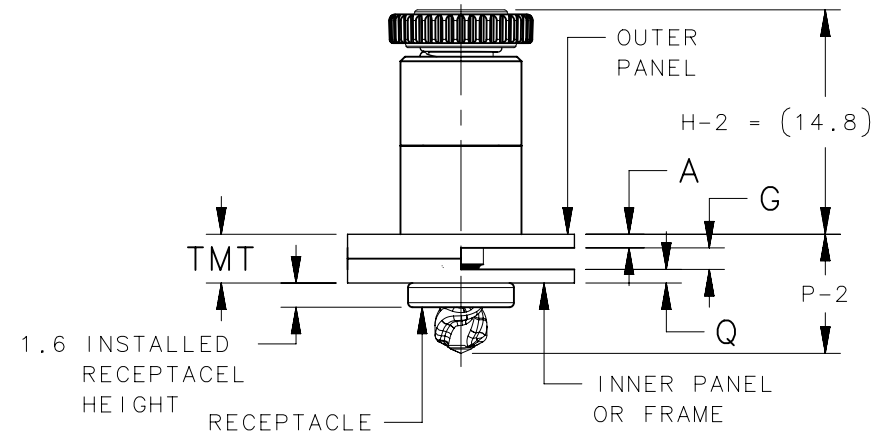
WITH SADDLE RECEPTACLE D9-62-11
(ORDER SEPARATELY)

$TMT = A+G+3.15$



WITH PRESS-IN RECEPTACLE D9-63-11
(ORDER SEPARATELY)

$TMT = A+G+Q$



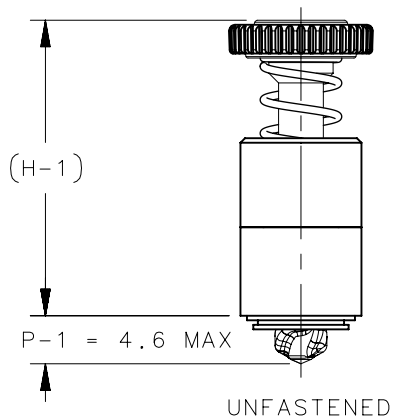
SADDLE STYLE RECEPTACLE						
STUD ASSEMBLY PART NUMBER	STUD LENGTH	(H-1)	P-2 MAX	TMT RANGE		
				MIN.	NOMINAL	MAX.
D9-52-13A1-KEEE	1	18.5	8.3	5.3	6	6.2
D9-52-13A2-KEEE	2	19.5	9.3	6.3	7	7.2
D9-52-13A3-KEEE	3	20.5	10.3	7.3	8	8.2
D9-52-13A4-KEEE	4	21.5	11.3	8.3	9	9.2

SEE J-D9-62 FOR SADDLE RECEPTACLE INFORMATION

PRESS-IN STYLE RECEPTACLE						
STUD ASSEMBLY PART NUMBER	STUD LENGTH	(H-1)	P-2 MAX	TMT RANGE		
				MIN.	NOMINAL	MAX.
D9-52-13A1-KEEE	1	18.5	8.3	1.4	2.1	2.3
D9-52-13A2-KEEE	2	19.5	9.3	2.4	3.1	3.3
D9-52-13A3-KEEE	3	20.5	10.3	3.4	4.1	4.3
D9-52-13A4-KEEE	4	21.5	11.3	4.4	5.1	5.3

SEE J-D9-63 FOR PRESS-IN RECEPTACLE INFORMATION

TMT = TOTAL MATERIAL THICKNESS
A = 0.9 MIN. PANEL THICKNESS
G = GAP
Q = 0.9 MIN. FRAME THICKNESS



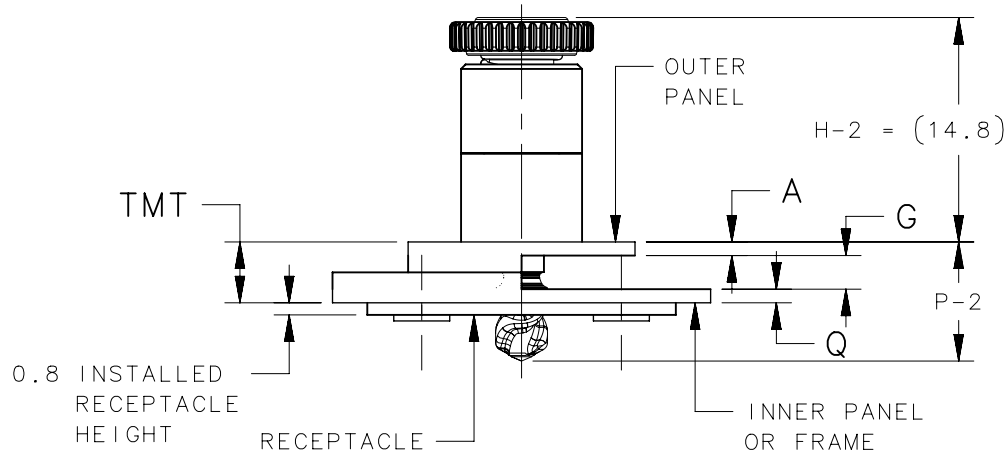
<p>THIRD ANGLE PROJECTION</p> <p>MILLIMETERS [IN]</p> <p>TOLERANCES UNLESS OTHERWISE NOTED</p> <p>ALL DIMENSIONS WITHOUT TOLERANCES ARE FOR REFERENCE ONLY.</p> <p>PROPRIETARY ITEM</p> <p><small>EXCEPT FOR USES EXPRESSLY GRANTED IN WRITING, INFORMATION DISCLOSED HEREON IS CONFIDENTIAL AND ALL RIGHTS, PATENT AND OTHERWISE, ARE RESERVED BY SOUTHCO, INC.</small></p>	<p>PER ASME Y14.5M-1994</p>		<p>southco[®]</p> <p>CONNECT • CREATE • INNOVATE</p>		
	<p>DESCRIPTION</p> <p>QUICK ACCESS FASTENER(OVER-MOLD)</p> <p>D9-52 PRESS-IN STYLE, 3.5 STUD SIZE</p>				
	<p>SIZE</p> <p>A4</p>	<p>SYSTEM</p> <p>NX</p>	<p>DWG NO.</p> <p>J-D9-52-13-KEEE</p>		
	<p>DRAWN BY</p> <p>ER</p>	<p>DATE</p> <p>18JAN2019</p>	<p>SCALE</p> <p>2:1</p>	<p>SHEET</p> <p>2 OF 3</p>	

LENGTH 2 STUD SHOWN IN ALL VIEWS.

REVISION HISTORY			
REV	DATE	BY	DESCRIPTION
C	20NOV2019	ER/LC	PRN: P2019-2850

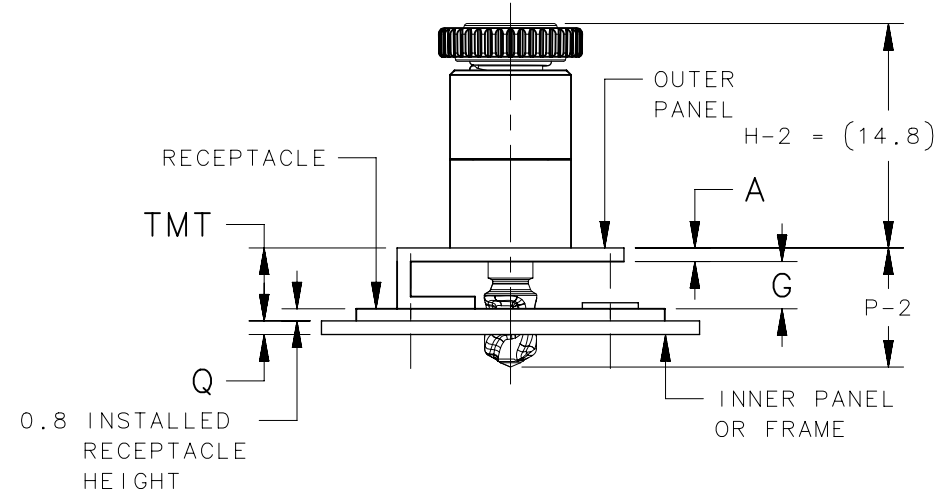
WITH FLAT RECEPTACLE D9-61-11
MOUNTED BELOW PANEL
(ORDER SEPARATELY)

$$TMT = A+G+Q$$



WITH FLAT RECEPTACLE D9-61-11
MOUNTED ABOVE PANEL
(ORDER SEPARATELY)

$$TMT = A+G+0.8$$



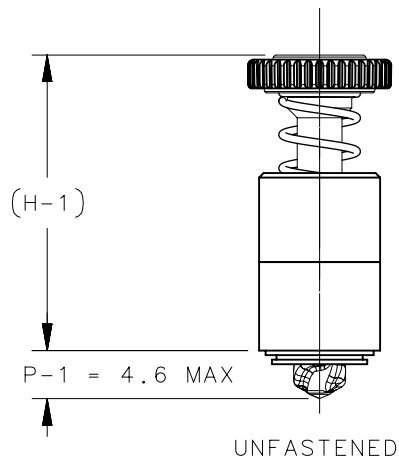
FLAT STYLE RECEPTACLE MOUNTED BELOW PANEL						
STUD ASSEMBLY PART NUMBER	STUD LENGTH	(H-1)	P-2 MAX	TMT RANGE		
				MIN.	NOMINAL	MAX.
D9-52-13A1-KEEE	1	18.5	8.3	2.1	2.8	3
D9-52-13A2-KEEE	2	19.5	9.3	3.1	3.8	4
D9-52-13A3-KEEE	3	20.5	10.3	4.1	4.8	5
D9-52-13A4-KEEE	4	21.5	11.3	5.1	5.8	6

SEE J-D9-61 FOR FLAT RECEPTACLE INFORMATION

FLAT STYLE RECEPTACLE MOUNTED ABOVE PANEL						
STUD ASSEMBLY PART NUMBER	STUD LENGTH	(H-1)	P-2 MAX	TMT RANGE		
				MIN.	NOMINAL	MAX.
D9-52-13A1-KEEE	1	18.5	8.3	2.9	3.6	3.8
D9-52-13A2-KEEE	2	19.5	9.3	3.9	4.6	4.8
D9-52-13A3-KEEE	3	20.5	10.3	4.9	5.6	5.8
D9-52-13A4-KEEE	4	21.5	11.3	5.9	6.6	6.8

SEE J-D9-61 FOR FLAT RECEPTACLE INFORMATION

TMT = TOTAL MATERIAL THICKNESS
A = 0.9 MIN. PANEL THICKNESS
G = GAP
Q = 0.9 MIN. FRAME THICKNESS



<p>THIRD ANGLE PROJECTION</p>	<p>MILLIMETERS [IN]</p>		<p>DESCRIPTION QUICK ACCESS FASTENER(OVER-MOLD) D9-52 PRESS-IN STYLE, 3.5 STUD SIZE</p>		<p>DWG NO. J-D9-52-13-KEEE</p>	
						<p>TOLERANCES UNLESS OTHERWISE NOTED</p>
	<p>ALL DIMENSIONS WITHOUT TOLERANCES ARE FOR REFERENCE ONLY.</p>		<p>SIZE A4</p>	<p>SYSTEM NX</p>	<p>SCALE 2:1</p>	<p>SHEET 3 OF 3</p>
	<p>PROPRIETARY ITEM EXCEPT FOR USES EXPRESSLY GRANTED IN WRITING, INFORMATION DISCLOSED HEREON IS CONFIDENTIAL AND ALL RIGHTS, PATENT AND OTHERWISE, ARE RESERVED BY SOUTHCO, INC.</p>		<p>PER ASME Y14.5M-1994</p>	<p>DRAWN BY ER</p>	<p>DATE 18JAN2019</p>	<p>SHEET 3 OF 3</p>

southco[®]
CONNECT • CREATE • INNOVATE