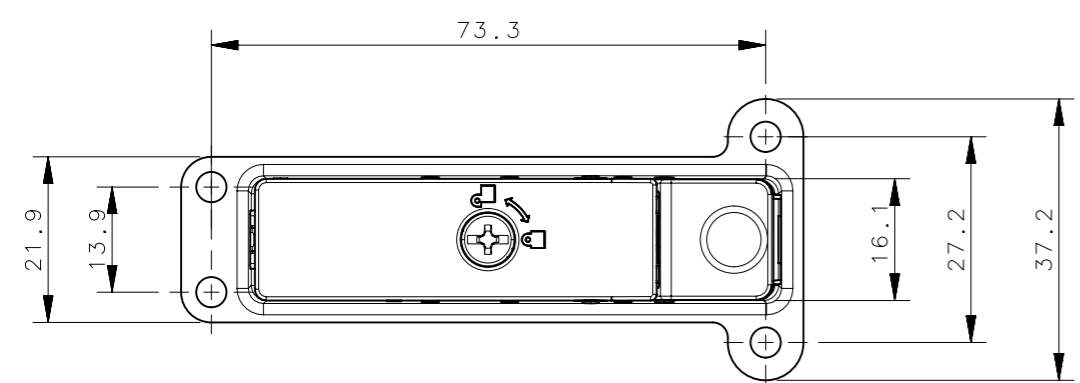
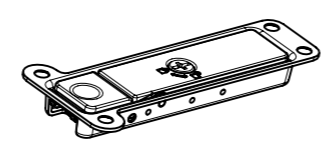


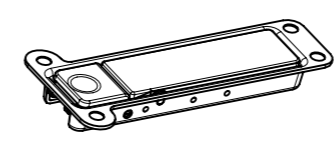
REVISION HISTORY			
REV	DATE	BY	DESCRIPTION
H	18AUG2020	JP/LC	PRN: P2020-1525



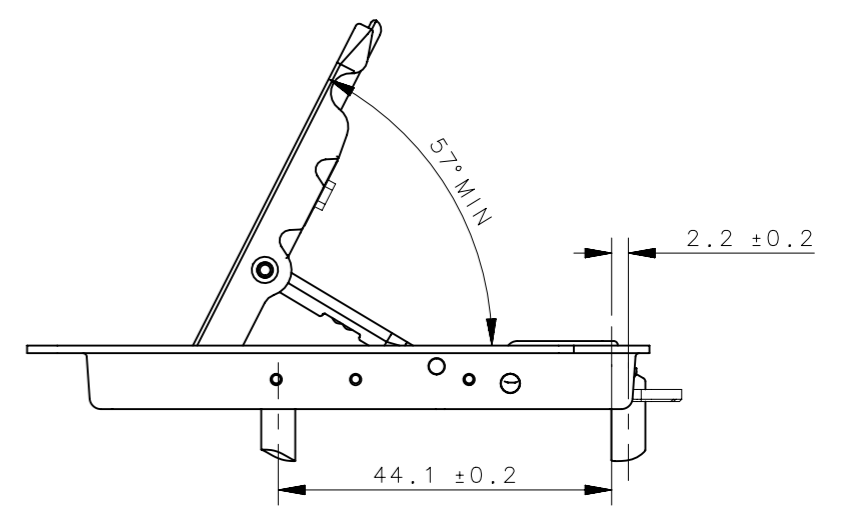
LATCHED



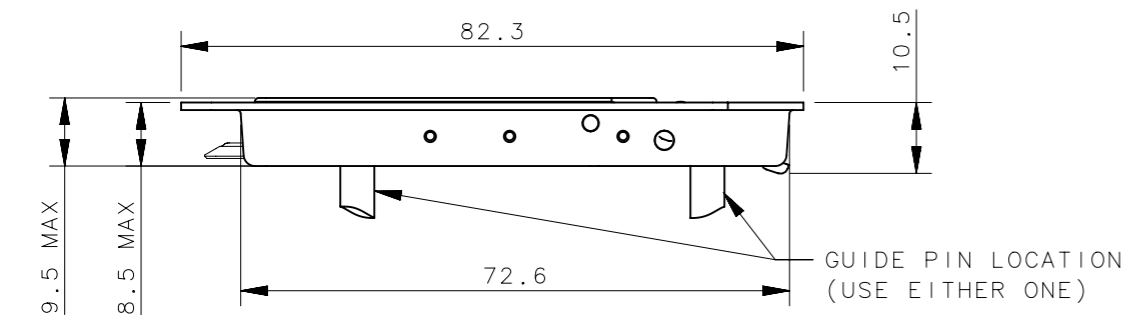
STANDARD WITH LOCK
(HH-50-5-006 SHOWN)



WITHOUT LOCK
(HH-55-5-006 SHOWN)

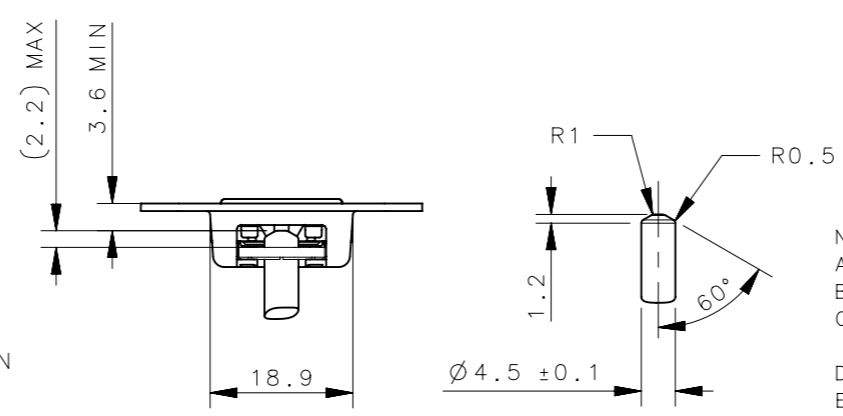


UNLATCHED



LATCHED (BUTTON PRESSED)

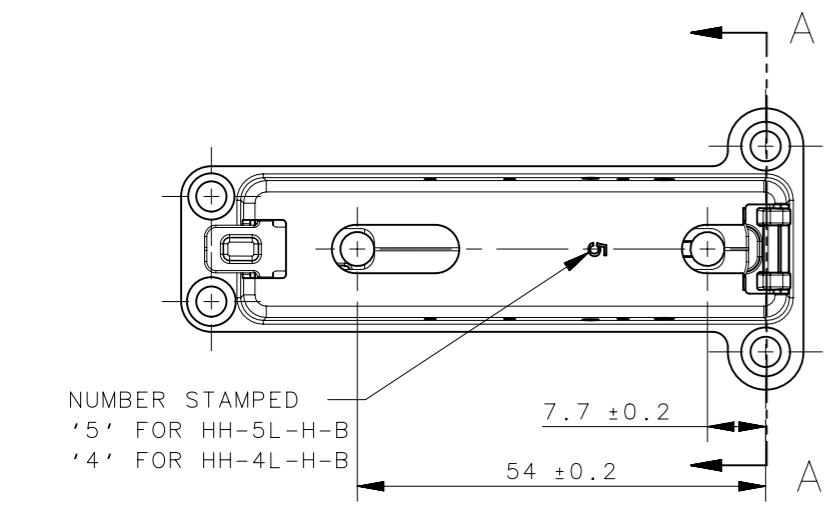
GUIDE PIN LOCATION
(USE EITHER ONE)



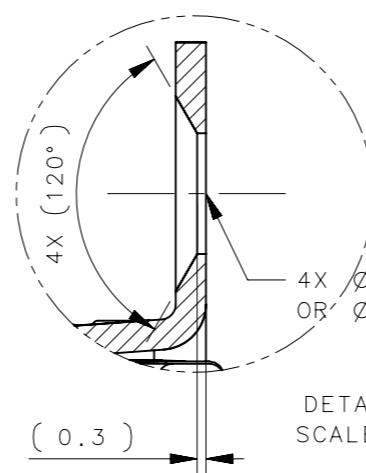
RECOMMENDED GUIDE PIN PREPARATION

NOTES:

- A. HOOD LATCH TRAVEL ENGAGEMENT: 10±0.5 mm.
- B. GUIDE PIN DIAMETER: 4.5±0.1 mm.
- C. PANEL AND HOODLATCH MAY NEED TO BE SUPPORTED TO ASSURE ENOUGH BUTTON PRESS ANGLE AND TRAVEL.
- D. 5KG LOAD ON SLIDE OR LEVER AT MAXIMUM.
- E. 250 TIMES OF LIFE CYCLE WITH FULL OPEN AND CLOSE MOVEMENT WITHOUT DAMAGE OR LOST OF FUNCTION.
- F. MATERIALS AND FINISHES:
 -LEVER: DIE CAST ZINC, POWDER COATED.
 -LINK AND STUD: DIE CAST ZINC, PASSIVATION.
 -CUP: SGCD, NATURAL.
 -PAWL: SPCC, GALVANIZED.
 -SLIDE: STEEL, GALVANIZED.
 -BUTTON: NYLON WITH GR.
 -KNURLED PIN: STAINLESS STEEL, PASSIVATION.
 -RIVET PIN: STEEL, NICKEL PLATED.
 -SPRING: MUSIC WIRE, GALVANIZED.
- G. RED RUST ON CUTTING EDGES OF GALVANIZED STEEL PERMITTED.
- H. OVERALL COSMETIC APPEARANCE PER SOUTHCO SPECIFICATION S-121, CLASS C.



SECTION A-A



DETAIL B
SCALE 4:1

PART NUMBER

HH- [C] [L] - [H] - [B]

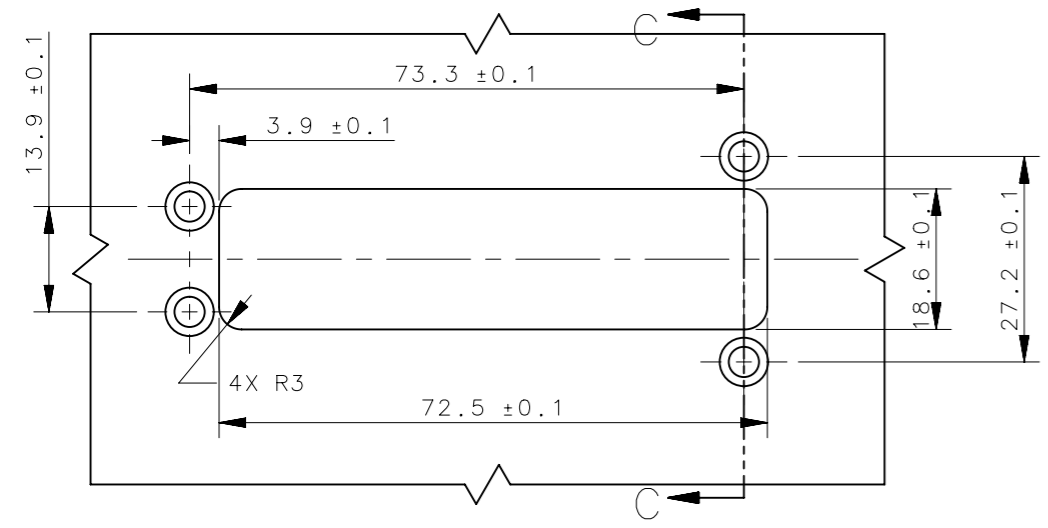
CUP STYLE	
4	3.4MM RIVET HOLE
5	4MM RIVET HOLE

LOCKING OPTION	
0	STANDARD WITH LOCK
5	WITHOUT LOCK

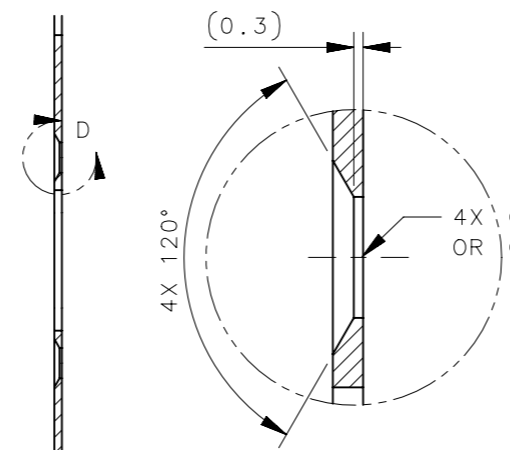
BUTTON MATERIAL	
000	NYLON, BLACK
006	NYLON, BLUE

SEE J-47-0-3 FOR ADDITIONAL COLORS

LEVER FINISH	
5	BLACK POWDER COATED
6	SILVER POWDER COATED



RECOMMENDED PANEL PREPARATION



DETAIL D
SCALE 4:1

SECTION C-C

HH-CL-H-B	ASSEMBLY	SEE NOTE F	SEE NOTE F
PART NUMBER	TYPE OF COMPONENT	MATERIAL	FINISH

THIRD ANGLE PROJECTION	
MILLIMETERS [IN]	
TOLERANCES UNLESS OTHERWISE NOTED	
UP TO 0.5	±0.1
OVER 0.5 UP TO 6	±0.2
OVER 6 UP TO 30	±0.4
OVER 30	±0.6
ANGLES	±5°
PROPRIETARY ITEM EXCEPT FOR USES EXPRESSLY GRANTED IN WRITING, INFORMATION DISCLOSED HEREON IS CONFIDENTIAL AND ALL RIGHTS, PATENT AND OTHERWISE, ARE RESERVED BY SOUTHCO, INC.	
PER ASME Y14.5M-1994	

southco [®]		CONNECT • CREATE • INNOVATE	
DESCRIPTION HOOD LATCH ASSEMBLY			
SIZE A3	SYSTEM NX	DWG NO. J-HH-50	
DRAWN BY JP/LC	DATE 22JUL2019	SCALE 1:1	SHEET 1 OF 1