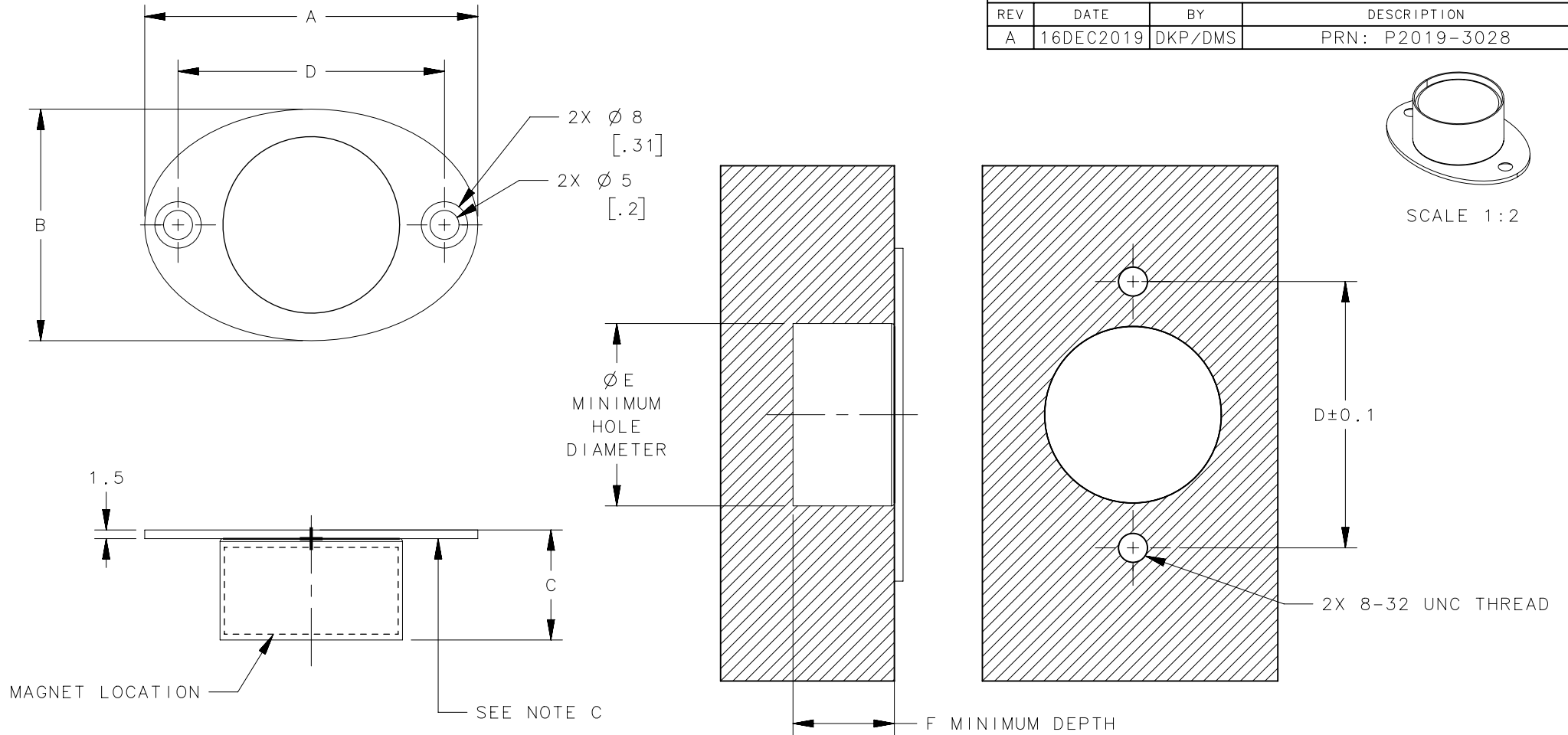


REVISION HISTORY			
REV	DATE	BY	DESCRIPTION
A	16DEC2019	DKP/DMS	PRN: P2019-3028



NOTES:

- A. MATERIAL AND FINISH:  
 - STRIKER FLUSH: CF-8M STAINLESS STEEL (NOMINAL CAST EQUIVALENT OF 316 STAINLESS STEEL), POLISHED.  
 MAGNET: NdFe B
- B. INSTALL FIXED MOUNT USING 8-32 UNC STAINLESS STEEL CROSS RECESSED COUNTERSUNK HEADSUNK HEAD SCREWS.
- C. LASER MARK N IS FOR NEGATIVE MAGNET  
 LASER MARK P IS FOR POSITIVE MAGNET

M5-7P-41-8	57.5	40	14	46	21.5	13.5	SEE NOTE A	SEE NOTE A	POSITIVE
M5-7N-41-8	57.5	40	14	46	21.5	13.5	SEE NOTE A	SEE NOTE A	NEGATIVE
M5-7P-61-8	57.5	40	19	46	31.5	18.5	SEE NOTE A	SEE NOTE A	POSITIVE
M5-7N-61-8	57.5	40	19	46	31.5	18.5	SEE NOTE A	SEE NOTE A	NEGATIVE
PART NUMBER	A	B	C	D	E	F	MATERIAL	FINISH	DESCRIPTION

THIRD ANGLE PROJECTION				 CONNECT • CREATE • INNOVATE					
MILLIMETERS [IN]									
SURFACE AREA		TOLERANCES UNLESS OTHERWISE NOTED		DESCRIPTION PUSH TO CLOSE LATCH					
VOLUME		ALL DIMENSIONS WITHOUT TOLERANCES ARE FOR REFERENCE ONLY.		SIZE A4	SYSTEM NX	DWG NO. J-M5-7X-Y1			
<small>PROPRIETARY ITEM EXCEPT FOR USES EXPRESSLY GRANTED IN WRITING, INFORMATION DISCLOSED HEREON IS CONFIDENTIAL AND ALL RIGHTS, PATENT AND OTHERWISE, ARE RESERVED BY SOUTHCO, INC.</small>		PER ASME Y14.5M-1994		DRAWN BY SAM/BC	DATE 14MAY2019	SCALE 1:1	SHEET 1 OF 1		