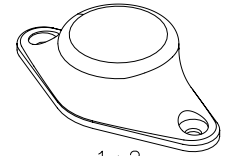
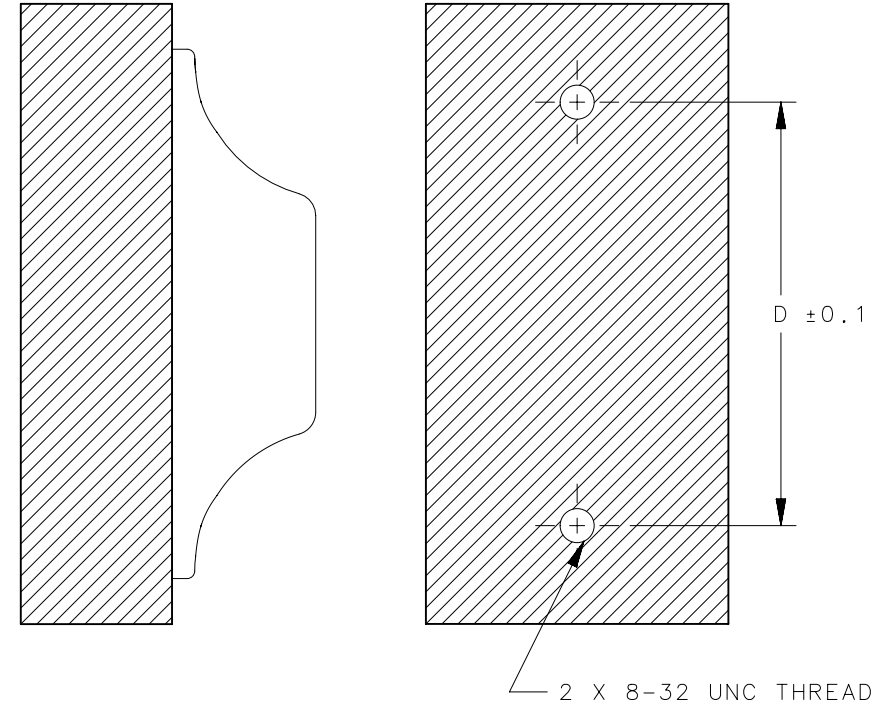
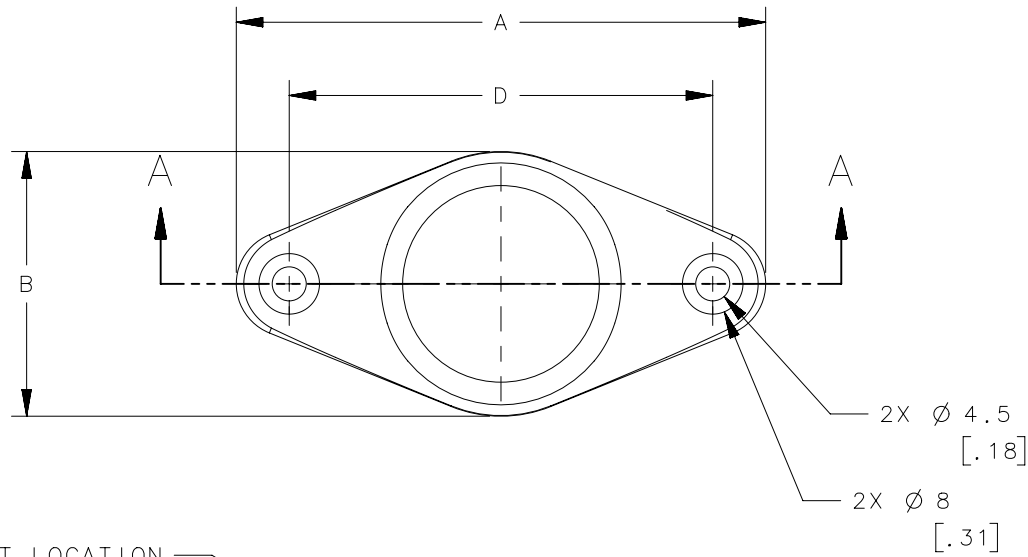


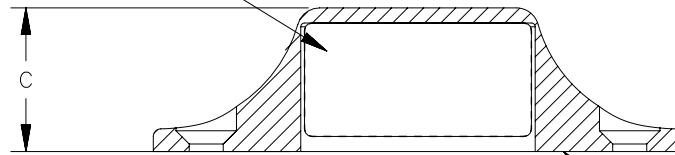
REVISION HISTORY			
REV	DATE	BY	DESCRIPTION
A	16DEC2019	DKP/DMS	PRN: P2019-3028



SCALE 1:2



MAGNET LOCATION



SECTION A-A

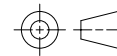
SEE NOTE C

NOTES:

- A. MATERIAL AND FINISH:
-STRIKER PROUD: CF-8M STAINLESS STEEL (NOMINAL CAST EQUIVALENT OF 316 STAINLESS STEEL), POLISHED.
MAGNET: NdFe B
- B. INSTALL FIXED MOUNT USING 8-32 UNC STAINLESS STEEL CROSS RECESSED COUNTERSUNK HEADSUNK HEAD SCREWS.
- C. LASER MARK N IS FOR NEGATIVE MAGNET
LASER MARK P IS FOR POSITIVE MAGNET

M5-7P-62-8	70	35	19	56	SEE NOTE A	SEE NOTE A	POSITIVE
M5-7N-62-8	70	35	19	56	SEE NOTE A	SEE NOTE A	NEGATIVE
M5-7P-42-8	46.5	27	15.2	34	SEE NOTE A	SEE NOTE A	POSITIVE
M5-7N-42-8	46.5	27	15.2	34	SEE NOTE A	SEE NOTE A	NEGATIVE
PART NUMBER	A	B	C	D	MATERIAL	FINISH	DESCRIPTION

THIRD ANGLE PROJECTION



MILLIMETERS [IN]

TOLERANCES UNLESS OTHERWISE NOTED

ALL DIMENSIONS WITHOUT TOLERANCES ARE FOR REFERENCE ONLY.

PROPRIETARY ITEM
EXCEPT FOR USES EXPRESSLY GRANTED IN WRITING, INFORMATION DISCLOSED HEREON IS CONFIDENTIAL AND ALL RIGHTS, PATENT AND OTHERWISE, ARE RESERVED BY SOUTHCO, INC.

PER ASME Y14.5M-1994

southco[®]
CONNECT • CREATE • INNOVATE

DESCRIPTION
PUSH TO CLOSE LATCH

SIZE A4	SYSTEM NX	DWG NO. J-M5-7X-Y2
DRAWN BY SAM/BC	DATE 14MAY2019	SCALE 1:1 SHEET 1 OF 1