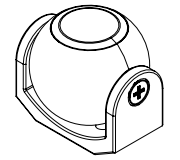
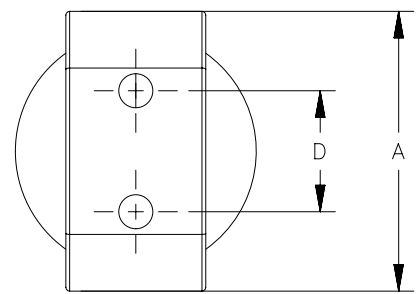
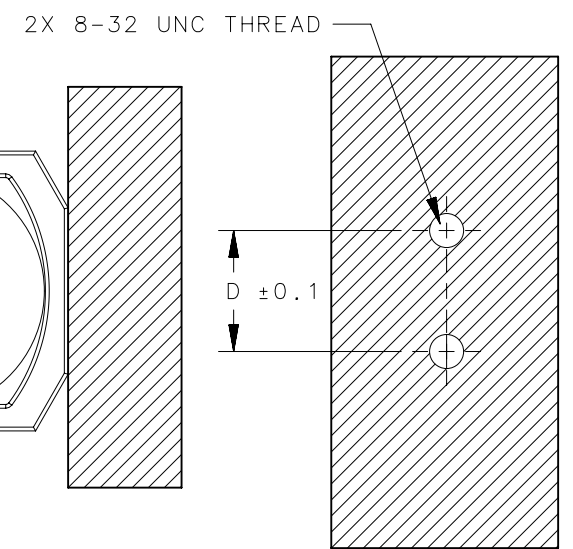


REVISION HISTORY			
REV	DATE	BY	DESCRIPTION
A	16DEC2019	DKP/DMS	PRN: P2019-3028



SCALE 1:2

INSTALLATION



NOTES:

- A. MATERIAL AND FINISH:
- BASE, BALL: CF-8M STAINLESS STEEL (NOMINAL CAST EQUIVALENT OF 316 STAINLESS STEEL), POLISHED.
 - RUBBER BUMPER: BUNA, BLACK.
 - SCREW: 304 STAINLESS STEEL.
 - MAGNET: NdFe B
- B. INSTALL BASE USING 8-32 UNC STAINLESS STEEL CROSS RECESSED COUNTERSUNK HEAD SCREW.
- C. INSTALLATION SEQUENCE:
1. REMOVE ROTATION LOCKING SCREWS AND BALL.
 2. INSTALL BASE.
 3. REINSTALL BALL WITH SCREWS, LOOSLY TIGHTEN.
 4. ADJUST BALL TO SUIT ANGLE AND TIGHTEN SCREWS.
- D. LASER MARK N IS FOR NEGATIVE MAGNET.

M5-7N-63-8	50	27	46.7	24	45	10	5
M5-7N-43-8	37	18.5	32	16	32	8.1	4.5
ASSEMBLY PART NUMBER	A	B	C	D	E	G	H
	THIRD ANGLE PROJECTION						
	MILLIMETERS [IN]						
	TOLERANCES UNLESS OTHERWISE NOTED						
	ALL DIMENSIONS WITHOUT TOLERANCES ARE FOR REFERENCE ONLY.						
PROPRIETARY ITEM	EXCEPT FOR USES EXPRESSLY GRANTED IN WRITING, INFORMATION DISCLOSED HEREON IS CONFIDENTIAL AND ALL RIGHTS, PATENT AND OTHERWISE, ARE RESERVED BY SOUTHCO, INC.	DESCRIPTION	BALL AND BASE SUBASSEMBLY				
	PER ASME Y14.5M-1994	SIZE	SYSTEM	DWG NO.			
		A4	NX	J-M5-7X-Y3			
		DRAWN BY	DATE	SCALE	SHEET		
		SAM/BC	14MAY2019	1:1	1 OF 1		