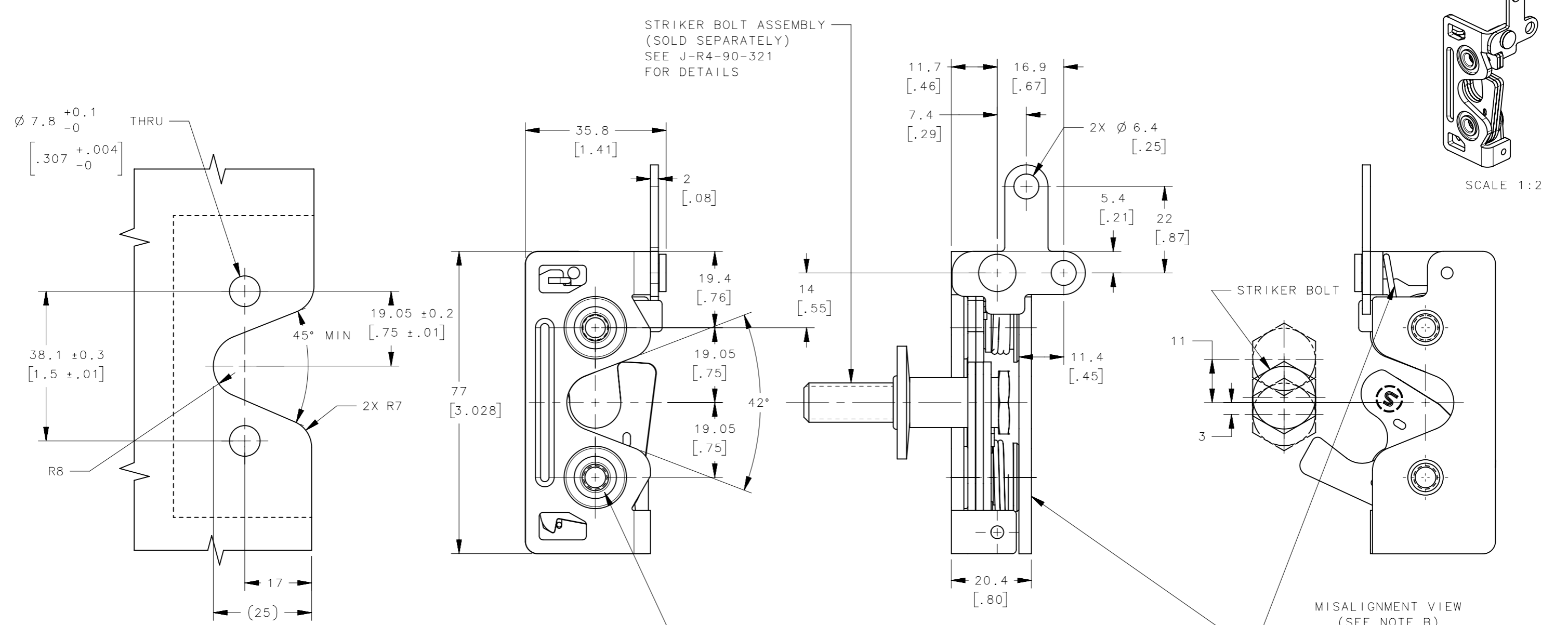


REVISION HISTORY			
REV	DATE	BY	DESCRIPTION
C	14MAY2020	CB1/VK	PRN: P2020-0955



PANEL PREPARATION

2X MOUNTING HOLES
SEE TABLE

OPTIONAL: (SOLD SEPARATELY)
SUPPORT PLATE (R4-38-101-10)
SEE J-R4-38-101 FOR DETAILS

NOTES:
A. MATERIAL AND FINISH:

- HOUSING, LEVER AND INTERNAL COMPONENTS: STEEL
- PAWL AND TRIGGER: HARDENED STEEL,
- SPRING: STAINLESS STEEL, PASSIVATED

B. THE MISALIGNMENT VIEW ASSUMES THE LATCH IS CONNECTED TO A PERFECTLY RIGID DOOR AND HINGE; THEREFORE, THERE IS NO DOOR AND/OR HINGE SLACK ASSOCIATED WITH THESE DIMENSIONS, THE MISALIGNMENT VIEW DOES NOT TAKE FLEXING OF THE STRIKER BOLT INTO ACCOUNT.

PART NUMBER	LATCH MOUNTING HOLE	MATERIAL	FINISH
R4-30-32-301-15	M6 THREAD	SEE NOTE A	BLACK ZINC NICKEL
R4-30-31-301-15	1/4-20 THREAD	SEE NOTE A	BLACK ZINC NICKEL
R4-30-30-301-15	Ø 6.73 THRU HOLE	SEE NOTE A	BLACK ZINC NICKEL
R4-30-32-301-10	M6 THREAD	SEE NOTE A	ZINC PLATED, BRIGHT CHROMATE
R4-30-31-301-10	1/4-20 THREAD	SEE NOTE A	ZINC PLATED, BRIGHT CHROMATE
R4-30-30-301-10	Ø 6.73 THRU HOLE	SEE NOTE A	ZINC PLATED, BRIGHT CHROMATE

THIRD ANGLE PROJECTION			
MILLIMETERS [IN]			
TOLERANCES UNLESS OTHERWISE NOTED		DESCRIPTION	
ALL DIMENSIONS WITHOUT TOLERANCES ARE FOR REFERENCE ONLY.		R4 LATCH ASSEMBLY - TWO POINT RIGHT HAND ACTUATION	
PER ASME Y14.5M-1994		SIZE A3	SYSTEM NX
DRAWN BY ACH/RJB		DATE 18JUN2013	DWG NO. J-R4-30-30-301
SCALE 1:1		SHEET 1 OF 1	