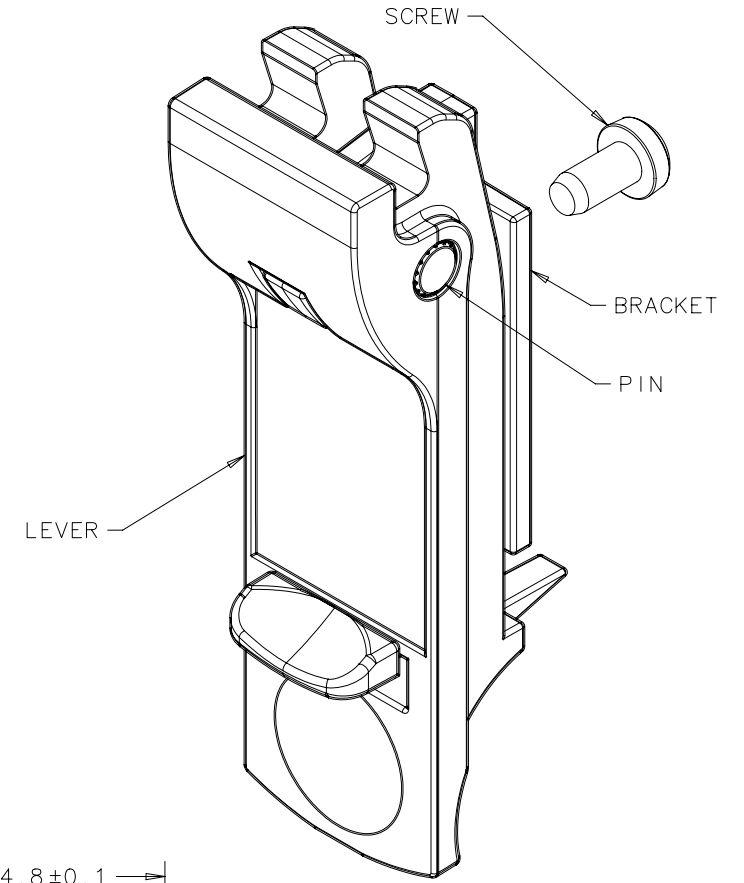
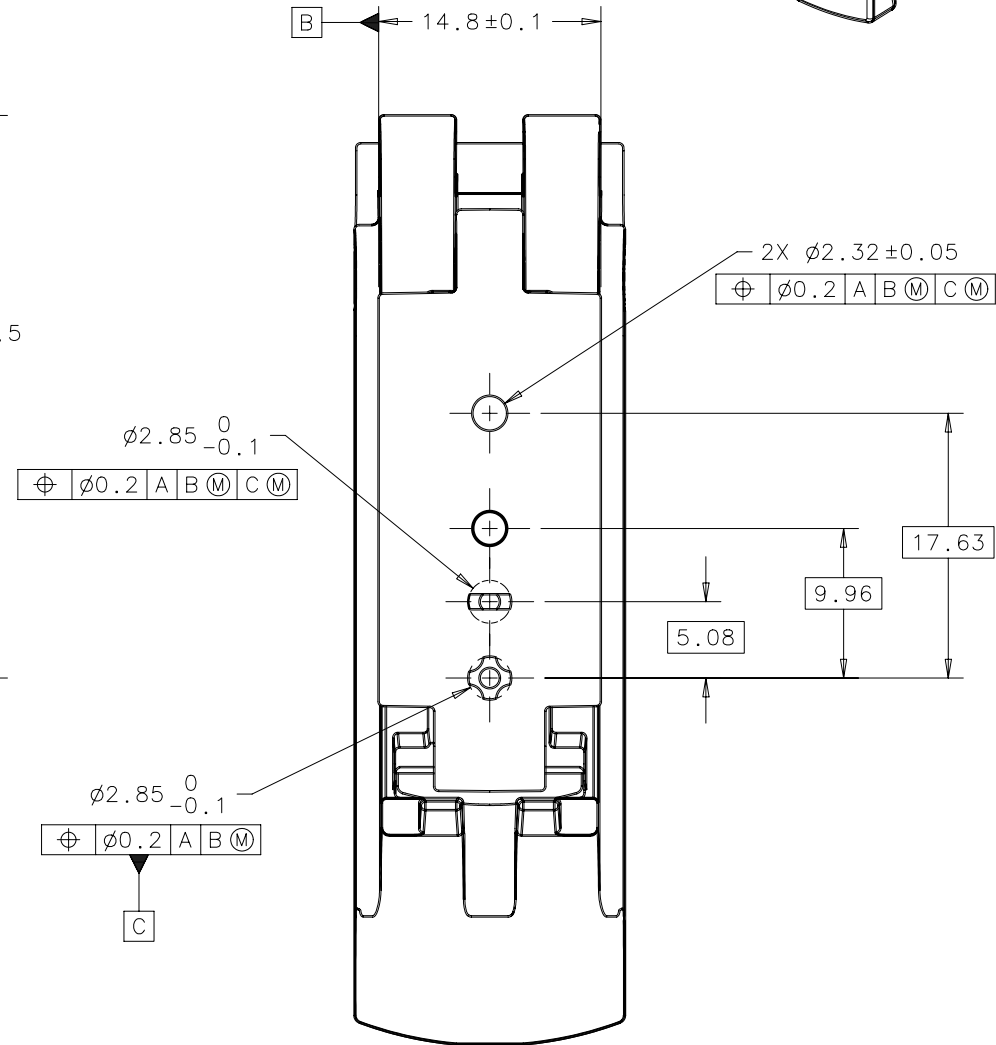
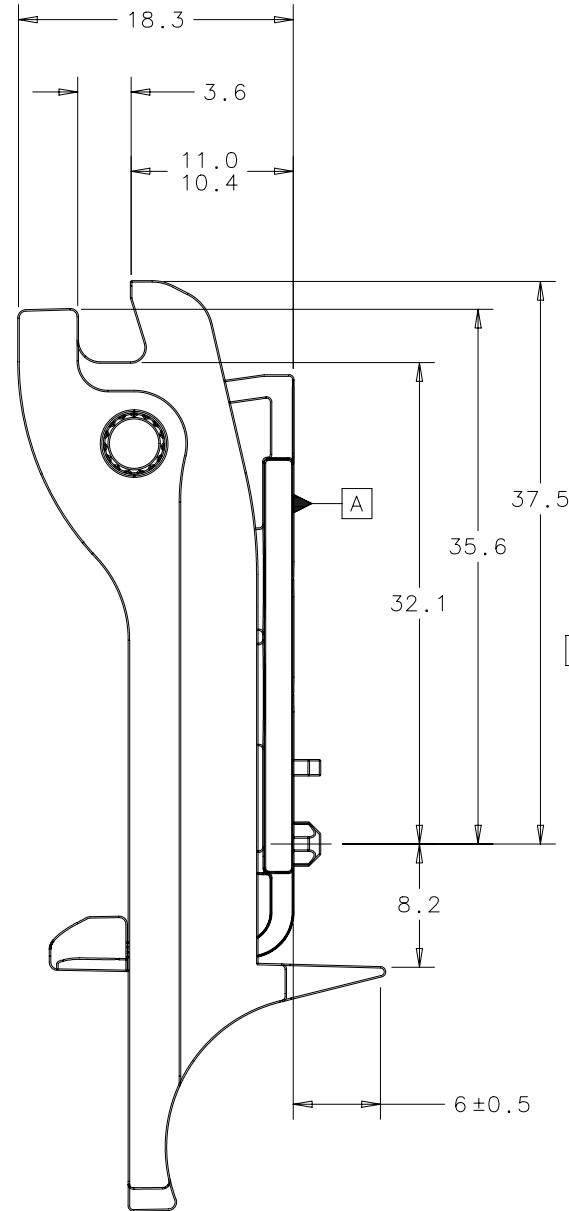
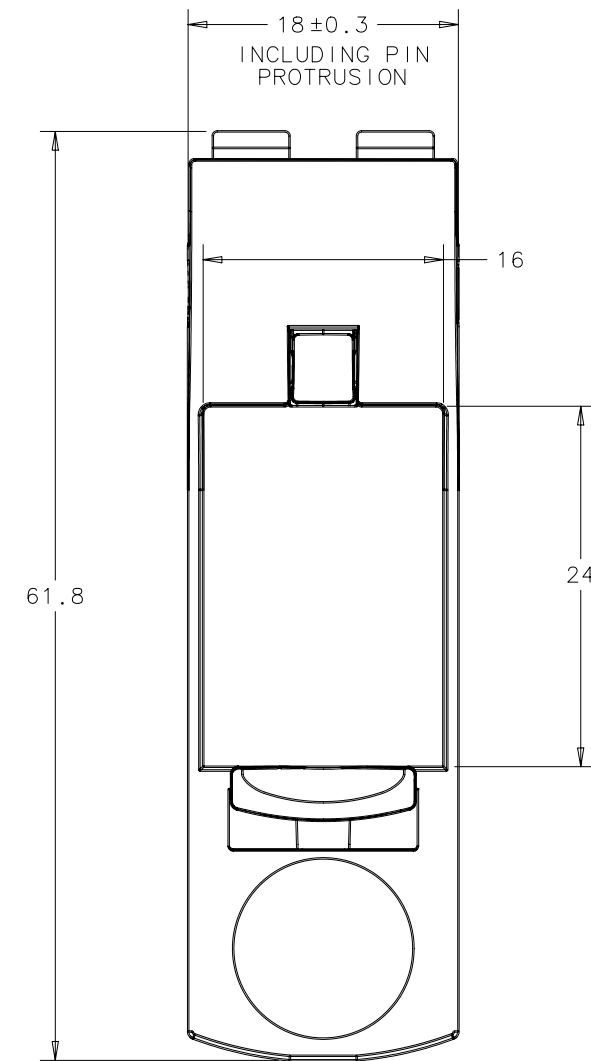


REV	DATE	DRAWN/CHKD	DESCRIPTION	SOUTHCO PART NUMBER	LUCENT COMCODE	MATERIAL	FINISH	DATE	DRAWN	CHKD	SCALE	DRAWING NUMBER
A	20MAR2004	RES/AJH	RELEASED FOR PRODUCTION	CN-10-9	848940656	SEE NOTE 1 SHEET 1	SEE NOTE 1 SHEET 1	15MAR2004	RES		2:1	N-39048-J
B	19APR2004	RES/AJH	PRN: P2004-0404									MILLIMETERS
C	22SEP2004	RES/AJH	PRN: P2004-1073									
D	02MAY2005	RES/AJH	PRN: P2005-0582									
E	15MAY2006	MDY/MJS	PRN: P2006-0682									
ALL DIMENSIONS WITHOUT TOLERANCES ARE FOR REFERENCE ONLY.												
THIRD ANGLE PROJECTION												
A3 PAPER SIZE												
SHEET 1 OF 2												



NOTES:

- MATERIAL AND FINISH:
 - LEVER: NYLON 6, 33% GLASS FILLED UL94-V0, CENTRAL OFFICE WHITE OS 11150
 - BRACKET: POLYCARBONATE, UL94-V0, CENTRAL OFFICE WHITE OS 11150
 - PIN: 300 SERIES STAINLESS STEEL, PASSIVATE
 - SCREW: LOW CARBON STEEL, ZINC PLATE
- LEVER TO BE FREE FROM PERMANENT FOREIGN MATERIALS.
- SCREW IS FOR MOUNTING LATCH ASSEMBLY TO FACEPLATE. IT CAN BE USED IN EITHER MOUNTING HOLE, DEPENDING ON THE APPLICATION.
- SCREW IS CAMCAR-TEXTRON PART NUMBER PT-K30-1.34X6MM LONG, PHL PAN HD SCREW.
- RECOMMENDED TIGHTENING TORQUE FOR SCREW IS 7.5±1.5 IN-LBS.
- PART NUMBER CN-10-9 CONSISTS OF LATCH SUB-ASSEMBLY CN-10-9-A AND MOUNTING SCREW CN-0-41066.
- RoHS COMPLIANT.



PROPRIETARY ITEM - EXCEPT FOR USES EXPRESSLY GRANTED IN WRITING INFORMATION DISCLOSED HEREON IS CONFIDENTIAL AND ALL RIGHTS, PATENT AND OTHERWISE ARE RESERVED BY SOUTHCO, INC.

BLANKPLATE EJECTOR ASSEMBLY

REV	DATE	DRAWN/CHKD	DESCRIPTION	SOUTHCO PART NUMBER	LUCENT COMCODE	MATERIAL	FINISH	DATE	DRAWN	CHKD	SCALE	DRAWING NUMBER
A	20MAR2004	RES/AJH	RELEASED FOR PRODUCTION	CN-10-9	848940656	SEE NOTE 1 SHEET 1	SEE NOTE 1 SHEET 1	15MAR2004	RES		2:1	N-39048-J
B	19APR2004	RES/AJH	PRN: P2004-0404									
C	22SEP2004	RES/AJH	PRN: P2004-1073									
D	02MAY2005	RES/AJH	PRN: P2005-0582									
E	15MAY2006	MDY/MJS	PRN: P2006-0682									

MILLIMETERS (INCHES)
 ALL DIMENSIONS WITHOUT TOLERANCES ARE FOR REFERENCE ONLY.
 THIRD ANGLE PROJECTION
 A3 PAPER SIZE
 SHEET 2 OF 2

FACEPLATE PREPARATION

