



# M1 Push-to-Close Latch

Lift-to-open · Flush

- Lift-to-open
- Single hole installation
- Dual sided latching

### Material and Finish

Latching slides and mounting bracket:  
Glass-filled reinforced nylon, black  
Housing and paddle:  
Polycarbonate/ABS, black

### Performance Details

Maximum working load:  
500 N (112 lbf)  
Flammability rating: UL94-HB

### Installation Notes

Maximum tightening torque on TORX® mounting screws:  
1.8 N·m (16 in·lbf)

### Accessories

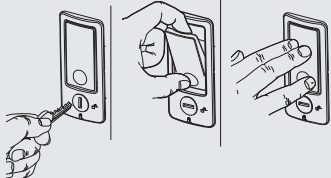
Flat key, keyed alike CH751  
(2 keys per ring)  
Part number: PK-10-01



Overmolded key, keyed alike CH751  
(2 keys per ring)  
Part number: PK-10-01-05

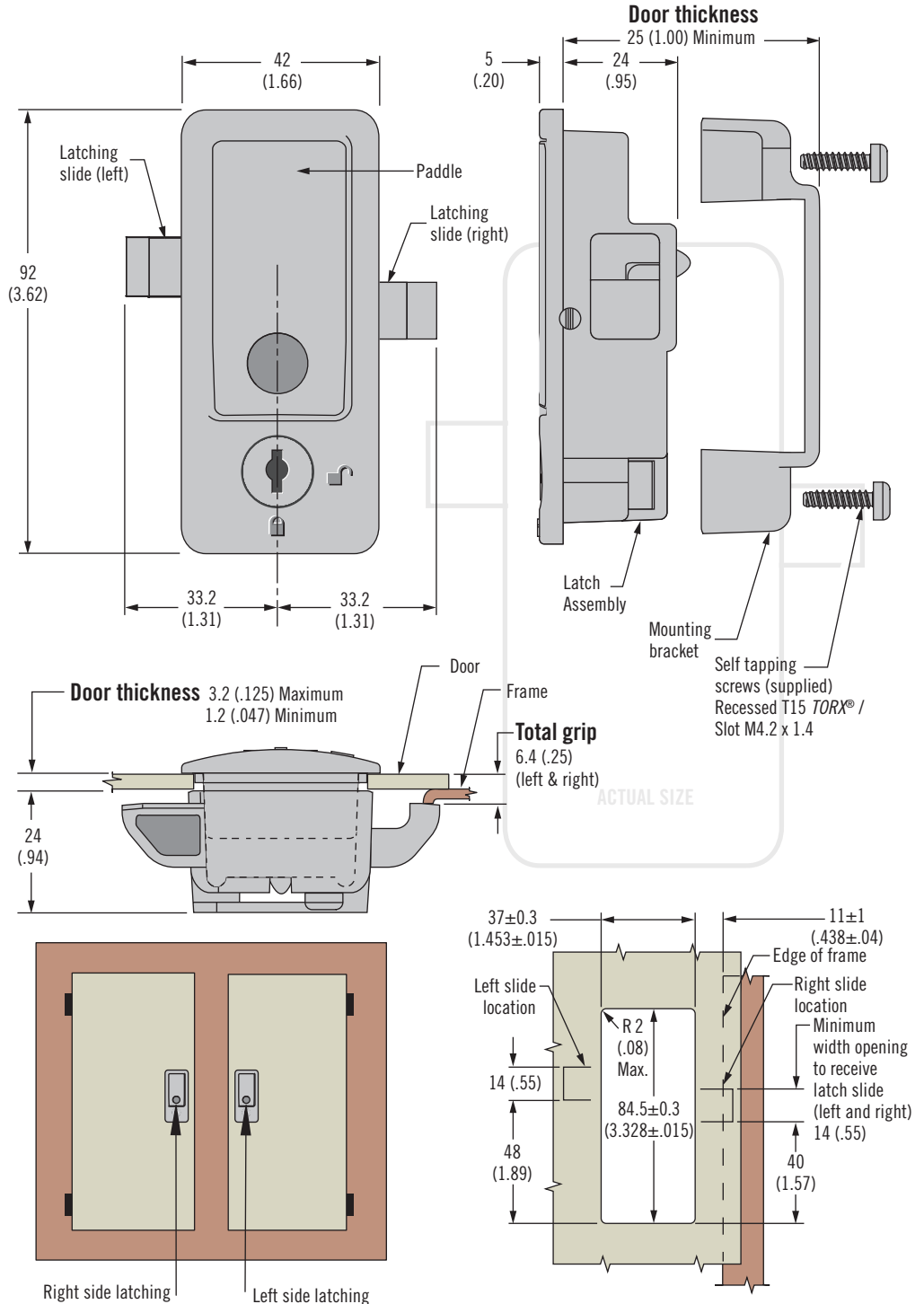


1. Unlock
2. Press and pull to open
3. Push to close



### Part Number

See table



Part Number (2 Flat Keys Supplied)	
Right side latching	M1-2F-1-25
Dual side latching	M1-2F-2-25
Left side latching	M1-2F-3-25

TORX is a registered trademark of ACUMENT® Intellectual Properties, LLC

Dimensions in millimeters (inch) unless otherwise stated



[www.southco.com/M1C](http://www.southco.com/M1C)