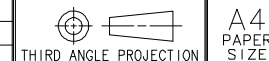
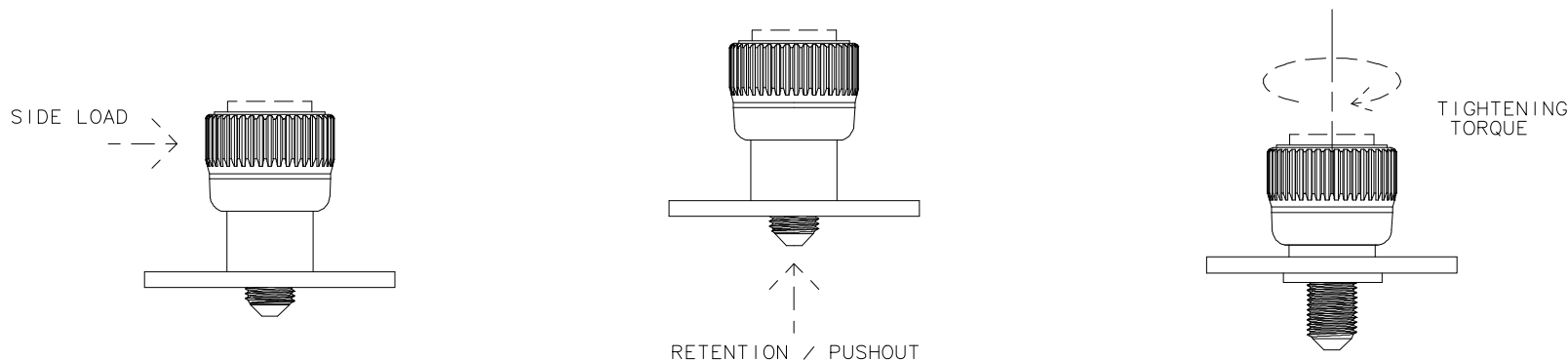


REV	DATE	DRAWN/CHKD	DESCRIPTION							
A	09APR2002	GDM	UPDATE FORMAT							



SOUTHCO PERFORMANCE GUIDELINES
 THE PERFORMANCE GUIDELINES SHOWN ON THIS PAGE ARE SUPPLIED AS A GENERAL GUIDE ONLY, AS CONDITIONS VARY WITH EACH APPLICATION AND METHOD OF INSTALLATION. STRENGTH DATA GIVEN IS FOR FAILURE OF THE PRODUCT OR FOR SUFFICIENT DEFORMATION TO MAKE PRODUCT INOPERABLE. NO SAFETY FACTOR HAS BEEN APPLIED IT IS RECOMMENDED THAT THE USER REQUEST A PRODUCT SAMPLE FOR TESTING TO DETERMINE THE SUITABILITY OF THE PRODUCT FOR THE PURPOSE INTENDED AND USER'S PARTICULAR APPLICATION.



ASSEMBLY NUMBER	SCREW SIZE	AVERAGE INSTALLATION FORCE N (lbf) SEE NOTE 1	AVERAGE PUSHOUT FORCE N (lbf) SEE NOTE 3	AVERAGE TIGHTENING TORQUE TO FAILURE N·cm (lbf·in) SEE NOTE 2	AVERAGE SIDE LOAD N (lbf) SEE NOTE 3
47- ⁶ / ₉ 5-1X1-XX	4-40 M3	2265 (509)	449 (101)	80 (16)	145 (33)
47- ⁶ / ₉ 5-2X1-XX	6-32 M3.5	2170 (488)	483 (109)	334 (30)	136 (31)

NOTES:

- ASSEMBLIES WERE INSTALLED AND TESTED IN FR-4(G-10) P.C. BOARD MATERIAL 1.6 mm (1/16") THICK.
- FAILURE OCCURRED IN THE BREAKING OF THE SCREW SHANK. SLOTTED DRIVE RECESS TESTED.
- FAILURE OCCURRED WHEN THE SAMPLE RELEASED FROM PCB.