

southco

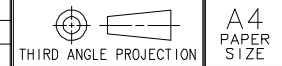
PROPRIETARY ITEM - EXCEPT FOR USES EXPRESSLY GRANTED IN WRITING INFORMATION DISCLOSED HEREON IS CONFIDENTIAL AND ALL RIGHTS PATENT AND OTHERWISE ARE RESERVED BY SOUTHCO, INC.

4C FLARE-IN CAPTIVE SCREW

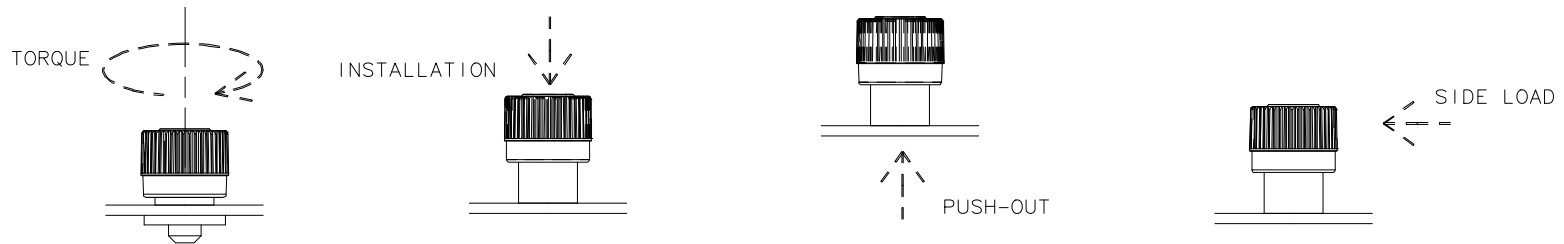
DATE	DRAWN	CHKD	SCALE
21MAR2003	GDM	SP	NTS

DRAWING NUMBER
TD-4C-F-01-J

REV	DATE	DRAWN/CHKD	DESCRIPTION



SOUTHCO PERFORMANCE GUIDELINES
 THE PERFORMANCE GUIDELINES SHOWN ON THIS PAGE ARE SUPPLIED AS A GENERAL GUIDE ONLY, AS CONDITIONS VARY WITH EACH APPLICATION AND METHOD OF INSTALLATION. STRENGTH DATA GIVEN IS FOR FAILURE OF THE PRODUCT OR FOR SUFFICIENT DEFORMATION TO MAKE PRODUCT INOPERABLE. NO SAFETY FACTOR HAS BEEN APPLIED IT IS RECOMMENDED THAT THE USER REQUEST A PRODUCT SAMPLE FOR TESTING TO DETERMINE THE SUITABILITY OF THE PRODUCT FOR THE PURPOSE INTENDED AND USER'S PARTICULAR APPLICATION.



4C FLARE-IN CAPTIVE SCREW																
ASSEMBLY PART NUMBER	SCREW THREAD SIZE	RECOMMENDED TIGHTENING TORQUE			AVERAGE TORQUE TO FAILURE			AVERAGE INSTALLATION FORCE			AVERAGE PUSH-OUT FORCE			AVERAGE SIDE LOAD FORCE		
		Ncm	lbf-in	NOTE	Ncm	lbf-in	NOTE	N	lbf	NOTE	N	lbf	NOTE	N	lbf	NOTE
4C-P□-06-□F1-K□□□	6-32	110	9.6	(3)	280	24.8	(4)	3000	675	(1)(2)	1027	230	(1)	223	50	(1)
4C-T□-06-□F1-K□□□					350	30.9	(5)				1216	273	(2)	307	69	(2)
4C-P□-10-□F1-K□□□	10-32	175	16	(6)	265	23.5	(4)	3000	675	(1)(2)	1228	276	(1)	340	76	(1)
4C-P□-10-□F1-K□□□					360	32	(3)				1170	103.6	(5)	1536	345	(2)

1. ASSEMBLIES WERE INSTALLED AND TESTED IN 1.5mm (.059in) THICK 5052-H32 ALUMINUM PANELS.
2. ASSEMBLIES WERE INSTALLED AND TESTED IN 1.5mm (.059in) THICK ASTM A109 TEMPER 2 STEEL PANELS (HRB 70-85).
3. REFERENCE - ASSEMBLY ENGINEERING MASTERS CATALOG: VOL. 10, 1971 © HITCHCOCK PUBLISHING CO.
4. FAILURE OF THE #2 PHILLIPS TOOL RECESS.
5. FAILURE OCCURRED IN THE BREAKAGE OF SCREW SHANK.
6. RECOMMENDED TIGHTENING TORQUE IS BASED ON A STATISTICAL MODEL OF TORQUE TO FAIL A #2 PHILLIPS RECESS.
7. MINIMUM KNOB RETENTION ON SCREW: TORQUE - 32.4 Ncm (2.9lbf-in), AXIAL FORCE - 355N (80lbf)