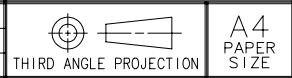
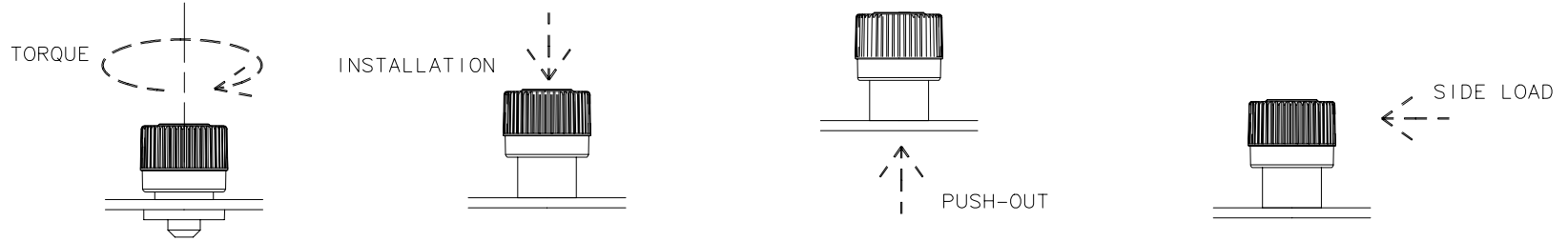


REV	DATE	DRAWN/CHKD	DESCRIPTION
A	29OCT2003	MJS/FS	
B	24NOV2023	GJL/SAK	PRN: P2023-2182



SOUTHCO PERFORMANCE GUIDELINES
 THE PERFORMANCE GUIDELINES SHOWN ON THIS PAGE ARE SUPPLIED AS A GENERAL GUIDE ONLY, AS CONDITIONS VARY WITH EACH APPLICATION AND METHOD OF INSTALLATION. STRENGTH DATA GIVEN IS FOR FAILURE OF THE PRODUCT OR FOR SUFFICIENT DEFORMATION TO MAKE PRODUCT INOPERABLE. NO SAFETY FACTOR HAS BEEN APPLIED IT IS RECOMMENDED THAT THE USER REQUEST A PRODUCT SAMPLE FOR TESTING TO DETERMINE THE SUITABILITY OF THE PRODUCT FOR THE PURPOSE INTENDED AND USER'S PARTICULAR APPLICATION.



4C FLARE-IN CAPTIVE SCREW																
ASSEMBLY PART NUMBER	SCREW THREAD SIZE	MAXIMUM RECOMMENDED TIGHTENING TORQUE			AVERAGE TORQUE TO FAILURE			AVERAGE INSTALLATION FORCE			AVERAGE PUSH-OUT FORCE			AVERAGE SIDE LOAD FORCE		
		Ncm	lbf-in	NOTE	Ncm	lbf-in	NOTE	N	lbf	NOTE	N	lbf	NOTE	N	lbf	NOTE
4C-P□-M3-□F1-K□□□	M3x0.5	60	5.3	(3)	150	13.3	(4)	3000	675	(1)(2)	500	112	(1)	154	34	(1)
4C-T□-M3-□F1-K□□□											757	170	(2)	274	61	(2)
4C-P□-M4-□F1-K□□□	M4x0.7	162	14.3	(3)	305	27.0	(6)	3000	675	(1)(2)						
4C-T□-M4-□F1-K□□□					395	35	(4)				1000	225	(2)	370	83	(2)

1. ASSEMBLIES WERE INSTALLED AND TESTED IN 1.5mm (.059in) THICK 5052-H32 ALUMINUM PANELS.
2. ASSEMBLIES WERE INSTALLED AND TESTED IN 1.5mm (.059in) THICK ASTM A109 TEMPER 2 STEEL PANELS (HRB 70-85).
3. REFERENCE - ASSEMBLY ENGINEERING MASTERS CATALOG: VOL. 10, 1971 © HITCHCOCK PUBLISHING CO.
4. FAILURE OCCURRED IN THE BREAKAGE OF SCREW SHANK.
5. MINIMUM KNOB RETENTION - M3: TORQUE -23.6Ncm (2.1 lbf-in), AXIAL FORCE - 270N (60lbf)
 M4: TORQUE -32.4Ncm (2.9 lbf-in), AXIAL FORCE - 355N (80lbf)
6. FAILURE OF #2 PHILLPS TOOL RECESS