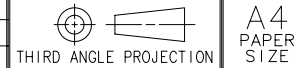
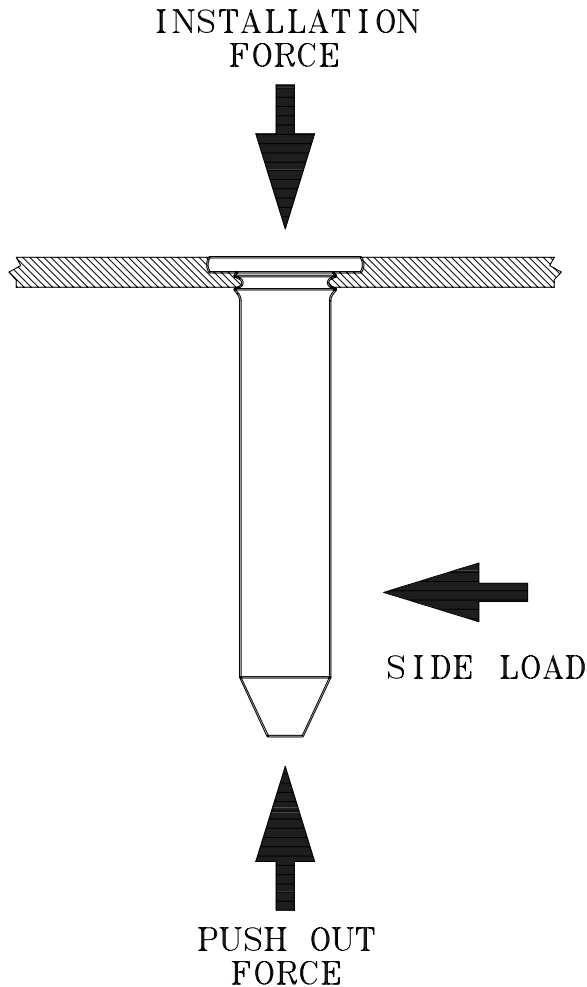
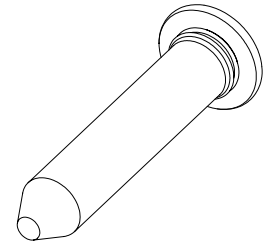


REV	DATE	DRAWN/CHKD	DESCRIPTION	PART NUMBER
A	08FEB2007	MJS/TVA	PRN: P2007-0239	77-0-40552-XX



SOUTHCO PERFORMANCE GUIDELINES

THE PERFORMANCE GUIDELINES SHOWN ON THIS PAGE ARE SUPPLIED AS A GENERAL GUIDE ONLY, AS CONDITIONS VARY WITH EACH APPLICATION AND METHOD OF INSTALLATION. STRENGTH DATA GIVEN IS FOR FAILURE OF THE PRODUCT OR FOR SUFFICIENT DEFORMATION TO MAKE THE PRODUCT INOPERABLE. NO SAFETY FACTOR HAS BEEN APPLIED. IT IS RECOMMENDED THAT THE USER REQUEST A PRODUCT SAMPLE FOR TESTING TO DETERMINE THE SUITABILITY OF THE PRODUCT FOR THE PURPOSE INTENDED AND USER'S PARTICULAR APPLICATION.



	TEST PANELS					
	ALUMINUM (A)		STEEL (B)		STAINLESS STEEL (C)	
	0.8mm (.031 inch) THICK	1mm (.039 inch) THICK	0.8mm (.031 inch) THICK	1mm (.039 inch) THICK	1mm (.039 inch) THICK	1.2mm (.047 inch) THICK
① AVERAGE INSTALLATION FORCE N lbf	12,000 N 2,698 lbf	12,000 N 2,698 lbf	22,000 N 4,946 lbf	22,000 N 4,946 lbf	35,000 N 7,868 lbf	35,000 N 7,868 lbf
② AVERAGE PUSH OUT FORCE N lbf	453 N 102 lbf	559 N 126 lbf	1119 N 252 lbf	1218 N 274 lbf	1624 N 365 lbf	1408 N 317 lbf
③ AVERAGE SIDE LOAD N lbf	77 N 17 lbf	105 N 24 lbf	135 N 30 lbf	197 N 44 lbf	243 N 55 lbf	290 N 65 lbf

- ① INSTALLATION COMPLETE WHEN TOP OF PIN IS FLUSH WITH TOP OF PANEL.
- ② PUSH OUT COMPLETE WHEN PIN RELEASED FROM PANEL.
- ③ SIDE LOAD COMPLETE WHEN HEAD OF PIN BROKE AWAY FROM PANEL.
- ④ PART NUMBER 77-0-40552 TESTED. RESULTS FOR SIDE LOAD ON OTHER LENGTHS MAY VARY.
- (A) ALUMINUM 5052 WITH A HARDNESS OF H32.
- (B) CRS/No. 5 WITH A HARDNESS OF RB 51.25.
- (C) 304 STAINLESS STEEL