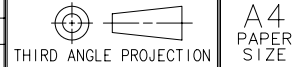
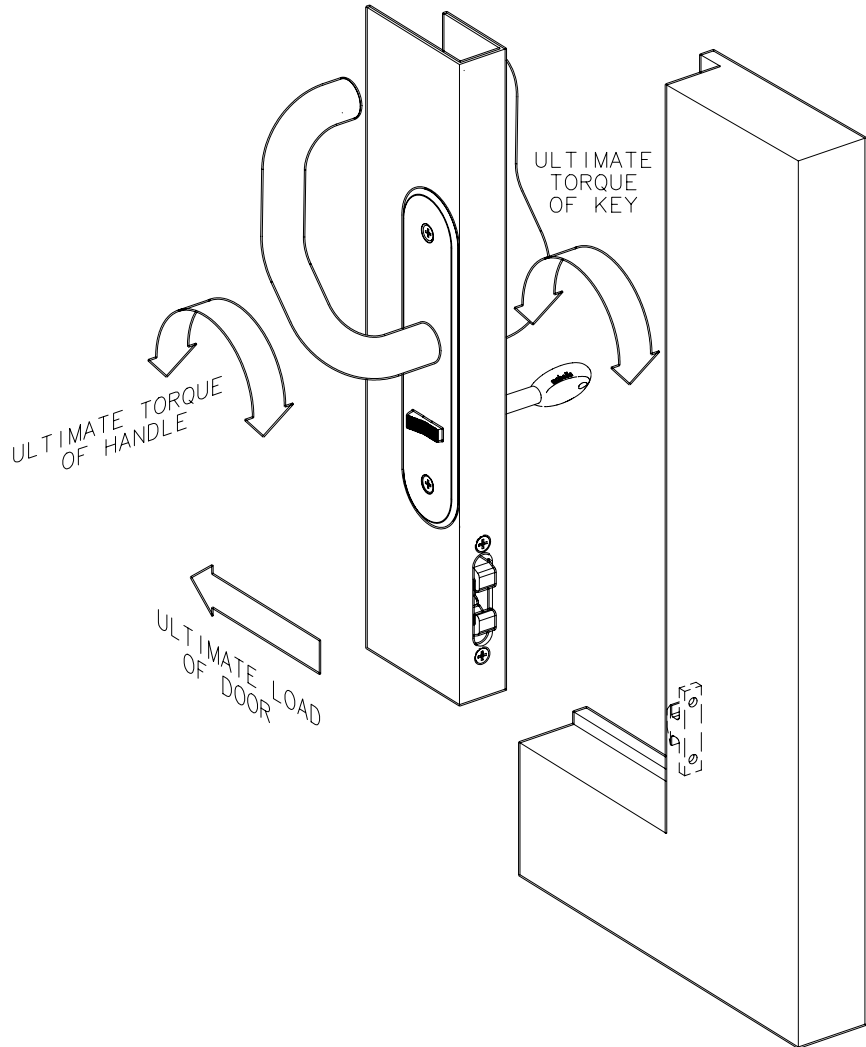


| REV | DATE      | DRAWN/CHKD | DESCRIPTION            |
|-----|-----------|------------|------------------------|
| A   | 05APR2007 | MJS/SP     | REMOVED SALT FOG DATA. |



### SOUTHCO PERFORMANCE GUIDELINES

THE PERFORMANCE GUIDELINES SHOWN ON THIS PAGE ARE SUPPLIED AS A GENERAL GUIDE ONLY, AS CONDITIONS VARY WITH EACH APPLICATION AND METHOD OF INSTALLATION. STRENGTH DATA GIVEN IS FOR FAILURE OF THE PRODUCT OR FOR SUFFICIENT DEFORMATION TO MAKE PRODUCT INOPERABLE. NO SAFETY FACTOR HAS BEEN APPLIED IT IS RECOMMENDED THAT THE USER REQUEST A PRODUCT SAMPLE FOR TESTING TO DETERMINE THE SUITABILITY OF THE PRODUCT FOR THE PURPOSE INTENDED AND USER'S PARTICULAR APPLICATION.



| PART NUMBER     | AVG. ULTIMATE LOAD OF DOOR | AVG. ULTIMATE TORQUE OF HANDLE | AVG. ULTIMATE TORQUE OF KEY |
|-----------------|----------------------------|--------------------------------|-----------------------------|
| MM-03-X3X-14-10 | 5758 N                     | 35 N • m                       | 2.6 N • m                   |

AVERAGE ULTIMATE LOAD - is the load that causes failure or excessive deformation which renders the product inoperable.

Overloading the fastener beyond these conditions is not recommended.

CYCLE LIFE - Samples performed flawlessly after 2,500 cycles and showed no noticeable signs of wear.