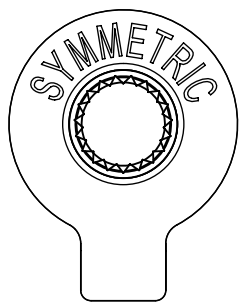
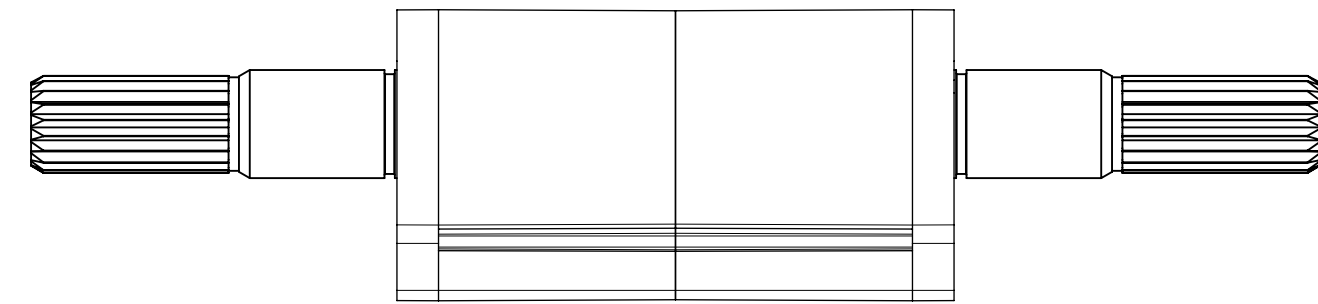
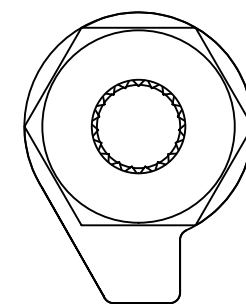
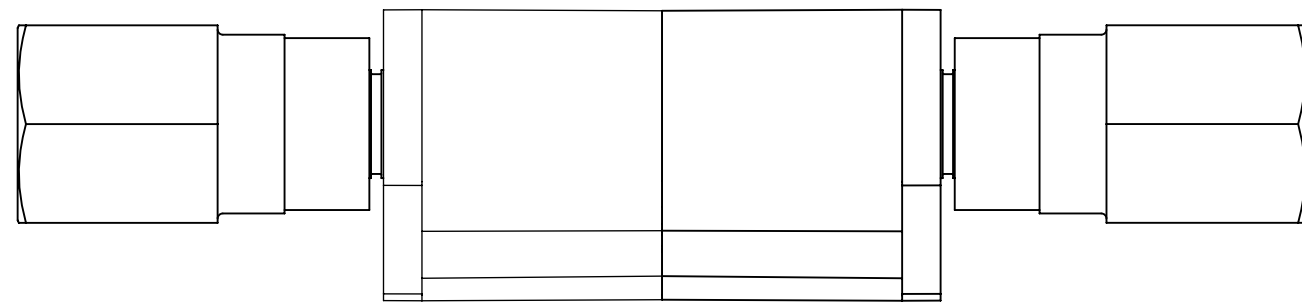


REVISION HISTORY			
REV	DATE	BY	DESCRIPTION
A	08MAR2018	JJT/MJS	IP-2016-3255

SOUTHCO PERFORMANCE GUIDELINES:
 THE PERFORMANCE GUIDELINES SHOWN ON THIS PAGE ARE SUPPLIED AS A
 GENERAL GUIDE ONLY, AS CONDITIONS VARY WITH EACH APPLICATION AND METHOD
 OF INSTALLATION. STRENGTH DATA GIVEN IS FOR FAILURE OF THE PRODUCT OR
 FOR SUFFICIENT DEFORMATION TO MAKE THE PRODUCT INOPERABLE. NO SAFETY FACTOR
 HAS BEEN APPLIED IT IS RECOMMENDED THAT THE USER REQUEST A PRODUCT SAMPLE
 FOR TESTING TO DETERMINE THE SUITABILITY OF THE PRODUCT FOR THE PURPOSE INTENDED
 AND USER'S PARTICULAR APPLICATION.

PART NUMBER	FORWARD TORQUE, Nm (in-lbf)	REVERSE TORQUE, Nm (in-lbf)	CYCLE LIFE
ST-11P2-350SA1-33	3.95 (35)		20,000
ST-11P2-300SA1-33	3.39 (30)		
ST-11P2-250SA1-33	2.82 (25)		
ST-11P2-200SA1-33	2.26 (20)		
ST-11P2-150SA1-33	1.69 (15)		
ST-11P2-400FA1-33	4.52 (40)	3.16 (28)	
ST-11P2-350FA1-33	3.95 (35)	2.77 (24.5)	
ST-11P2-300FA1-33	3.39 (30)	2.37 (21)	
ST-11P2-250FA1-33	2.82 (25)	1.98 (17.5)	
ST-11P2-200FA1-33	2.26 (20)	1.58 (14)	
ST-11P2-150FA1-33	1.69 (15)	1.19 (10.5)	
ST-11P2-400RA1-33	3.16 (28)	4.52 (40)	
ST-11P2-350RA1-33	2.77 (24.5)	3.95 (35)	
ST-11P2-300RA1-33	2.37 (21)	3.39 (30)	
ST-11P2-250RA1-33	1.98 (17.5)	2.82 (25)	
ST-11P2-200RA1-33	1.58 (14)	2.26 (20)	
ST-11P2-150RA1-33	1.19 (10.5)	1.69 (15)	

PART NUMBER	FORWARD TORQUE, Nm (in-lbf)	REVERSE TORQUE, Nm (in-lbf)	CYCLE LIFE
ST-11P2-350SA-33	3.95 (35)		20,000
ST-11P2-300SA-33	3.39 (30)		
ST-11P2-250SA-33	2.82 (25)		
ST-11P2-200SA-33	2.26 (20)		
ST-11P2-150SA-33	1.69 (15)		
ST-11P2-400FA-33	4.52 (40)	3.16 (28)	
ST-11P2-350FA-33	3.95 (35)	2.77 (24.5)	
ST-11P2-300FA-33	3.39 (30)	2.37 (21)	
ST-11P2-250FA-33	2.82 (25)	1.98 (17.5)	
ST-11P2-200FA-33	2.26 (20)	1.58 (14)	
ST-11P2-150FA-33	1.69 (15)	1.19 (10.5)	
ST-11P2-400RA-33	3.16 (28)	4.52 (40)	
ST-11P2-350RA-33	2.77 (24.5)	3.95 (35)	
ST-11P2-300RA-33	2.37 (21)	3.39 (30)	
ST-11P2-250RA-33	1.98 (17.5)	2.82 (25)	
ST-11P2-200RA-33	1.58 (14)	2.26 (20)	
ST-11P2-150RA-33	1.19 (10.5)	1.69 (15)	



NOTES:

- ONE CYCLE = CLOSED POSITION TO OPEN POSITION AT 180° PLUS RETURN TO INITIAL CLOSED POSITION AT AMBIENT TEMPERATURE.
- TORQUE SPECIFICATIONS AT A CYCLE LIFE OF 20,000 AT 25% DUTY CYCLE AT SPEEDS LESS THAN 15 RPM.
- CYCLING TESTING WAS CONDUCTED USING THE FOLLOWING PROFILE:
 - 5,000 CYCLES AT -20°C
 - 10,000 CYCLES AT AMBIENT
 - 5,000 CYCLES AT 80°C

CYCLE TEST CONDUCTED TILT MOVEMENT TILT TEST USING A 2.0 kg (4.41 lbf) TEST DISPLAY PANEL WITH THE ST-11P2 CARTRIDGE OVERMOLDED IN E6-50-500 SERIES HINGE.

4. FOR TEST REPORTS SEE trE6-32571 & trST-30682.

THIRD ANGLE PROJECTION		 CONNECT • CREATE • INNOVATE	
MILLIMETERS [IN]			
SURFACE AREA XXXXXmm ²		DESCRIPTION ST-11P2 OVERMOLD CARTRIDGE	
VOLUME XXXXXmm ³		SIZE C SYSTEM NX DWG NO. TD-ST-11P2	
PROPRIETARY ITEM		DRAWN BY JJT DATE 08MAR2018 SCALE 1:1 SHEET 1 OF 1	
EXCEPT FOR USES EXPRESSLY GRANTED IN WRITING, INFORMATION DISCLOSED HEREON IS CONFIDENTIAL AND ALL RIGHTS, PATENT AND OTHERWISE, ARE RESERVED BY SOUTHCO, INC.		PER ASME Y14.5M-1994	